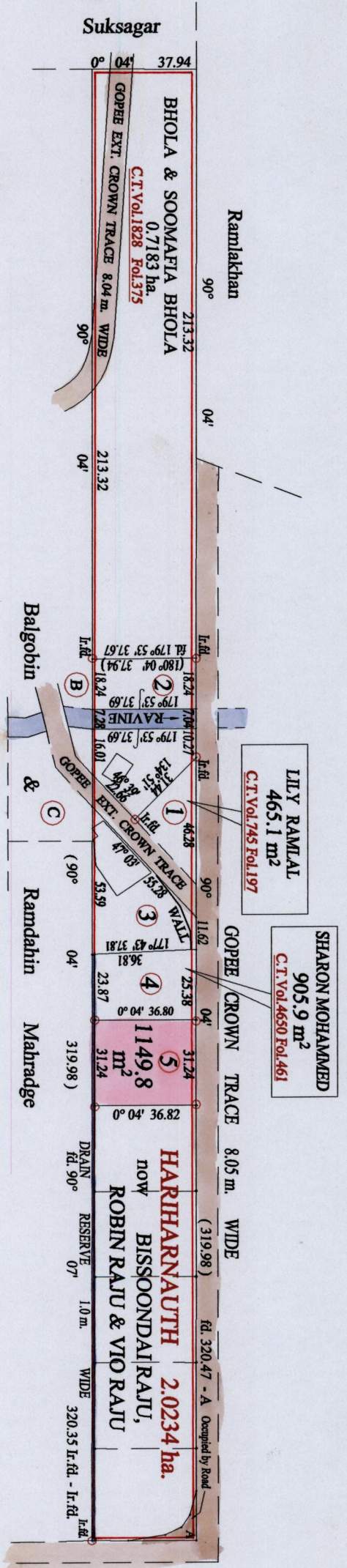


R.P.O. Vol. 96 Fol. 217
C.T. Vol. 745 Fol. 197

Vol. 5181 Fol. 433

Ward of Siparia
County of St. Patrick
Cadastral Sheet (G.13.E.&F.) 63.E.
2/d



165(1)

Approved *[Signature]*
Director of Surveys
2007-02-12

SCALE : 1:2000

Denotes Iron put except stated otherwise.
Note: Bearings are cassini grid based on solar observations
Distances are in metres

PLAN of a Parcel of land coloured pink in the Ward of Siparia
Containing one thousand one hundred and forty nine point eight square metres
Surveyed by me, with due authority, in May 2001
In accordance with Regulation 25 (1) of the Land Surveyors' Regulations 1998,
I certify that this plan is correct.

Checked by *[Signature]* *[Signature]*

Entered on Trinidad & Tobago Land Surveyor 23 - 01 - 2007

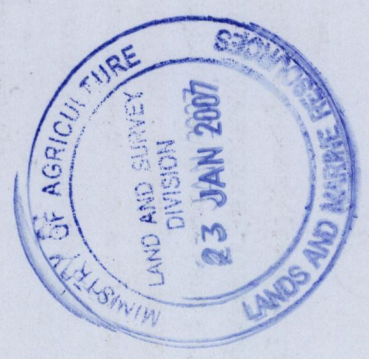
Vide Bk. 1157 fol. 117
Vide Bk. 1010 fol. 168

CASSINI



1386/36
Now 1650/28

Ct. VOLUME 5181 FOLIO 433 - GEETA DEONARINE



1386/36
Now 1650/28