

R.P.O. Vol. 164 Fol. 265

C.T. Vol. 4896 Fol. 55

Vide Bk. 993 fol. 181

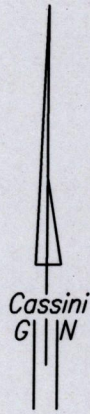
Vol. 5316 Fol. 117

Cadastral Sheet G.12.H. 63E
1/7d

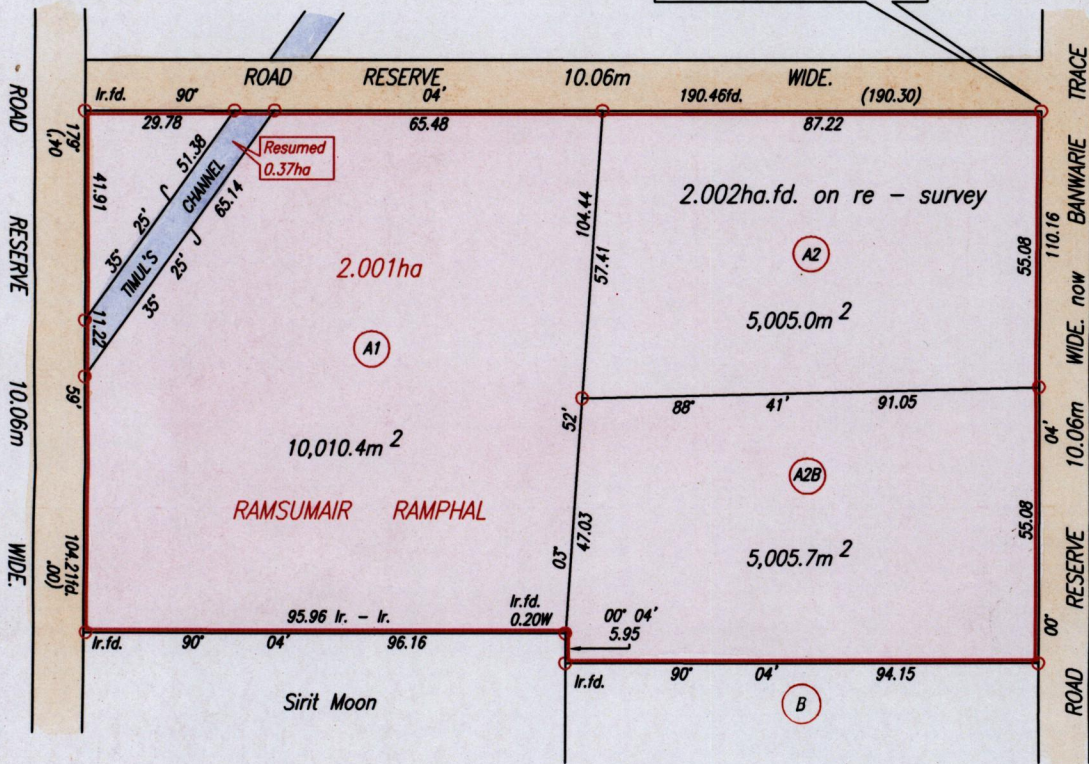
Ward of Siparia

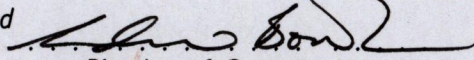
County of St. Patrick.

Penal



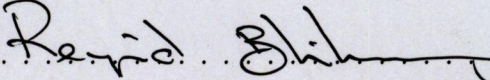
666526mE, 1125904mN
(U.T.M. 20, Naparima (+/-20m))
Coordinates obtained from
hand held GPS.



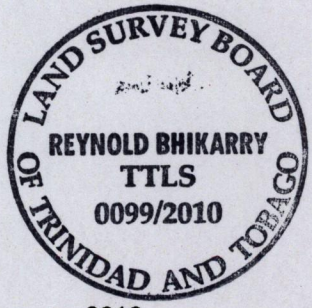
Approved 
Director of Surveys 2010-12-10

○ Denotes Iron put except otherwise stated.
Bearings are Cassini Grid based on Solar Observations.
SCALE 1:1500
Distances are in Metres

PLAN of 3 Parcels of land coloured pink in the Ward of Siparia
Containing together two point zero zero two hectares.
Surveyed by me, with due authority, in August, 2008
In accordance with Regulation 25(1) of the Land Surveyors' Regulations 1998,
I certify that this plan is correct.

Checked by  8/12/10

Entered Trinidad & Tobago Land Surveyor 5th May 2010





now 1650/23
~~1336/198~~