

661900mE, 1119540mN  
(U.T.M. 20, Naparuna (+/-10m))  
Coordinates obtained from  
hand held GPS

R.P.O Vol. 77 Fol. 475  
C.T. Vol. 2577 Fol. 201

Process ID# 41709  
C.T. Vol. 5393 Fol. 225

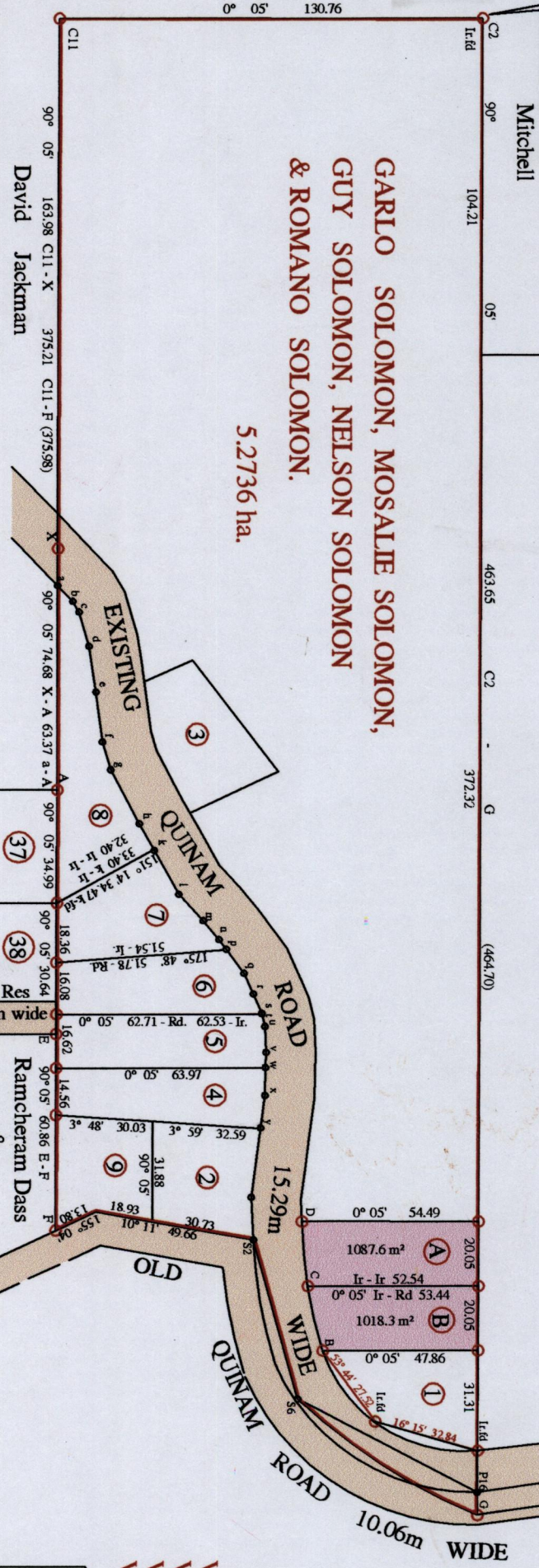
Gabriel David

Ward of Siparia  
County of St. Patrick  
Cadastral Sheet (G.17F) 73A  
SIPARIA  
2/4

then  
Marie  
Juanita  
Jaggernath

GARLO SOLOMON, MOSALIE SOLOMON,  
GUY SOLOMON, NELSON SOLOMON  
& ROMANO SOLOMON.

5.2736 ha.



David Jackman

a-b	46° 07'	6.84
b-c	59° 47'	3.78
c-d	73° 33'	11.02
d-e	81° 27'	14.40
e-f	82° 35'	15.56
f-g	73° 22'	9.05
g-h	61° 57'	18.86
h-k	60° 35'	9.57
k-l	60° 35'	15.55
l-m	47° 29'	11.15
m-n	50° 02'	7.65
n-p	53° 17'	3.76
p-q	53° 17'	9.21
q-r	65° 40'	7.23
r-s	66° 39'	6.39
s-t	75° 58'	0.13
t-u	75° 58'	4.05
u-v	87° 25'	8.03
v-w	91° 18'	4.67
w-x	91° 18'	8.67
x-y	97° 27'	10.14

P16-S6 207° 46' 55.41  
S6-S2 254° 24' 51.45

LOTS	AREA	C.T. Vol.	Fol.	Names
1	0.1085 ha.	4147	361	Romano & Eustacia Solomon
2	0.1037 ha.	4147	377	Ronnie Solomon
3	0.1079 ha.	4147	369	Nelson & Joyce Solomon
4	0.1057 ha.			
5	0.1060 ha.			
6	0.1055 ha.			
7	0.1073 ha.			
8	0.1437 ha.			

Approved by  
*[Signature]*  
Director of Surveys 2011.8.25

SCALE 1: 2000

Distances are in metres

Denotes Iron put except otherwise stated  
Plan of 2 Parcels of land coloured pink in the Ward of Siparia  
Containing together two thousand one hundred and five point nine square metres  
Surveyed by me, with due authority, in March 2006  
In accordance with Regulation 25 (1) of the Land Surveyors' Regulations 1998,  
I certify that this plan is correct.

Checked by *[Signature]* *[Signature]*

Entered on S.M.S. # 89-2011  
Trinidad and Tobago Land Surveyor *[Signature]* 2011.



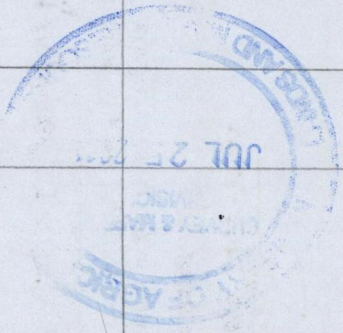
B	20.59	0.0	EXISTING ROAD QUINAM
	10.26	0.7	
C	77° 46'	0.9	
	20.15	1.0	
	10.07	0.0	
D	84° 31'	0.0	

Vide Plan G.A. 244  
Vide Plan K.F.2  
Vide Bk. fol. 271  
Vide Bk. 460 fol. 80



8951

Lot #	C.T. Vol's, Folio	Names.
A	5393 fd 237	Roy Solomon
B	5393 fd 239	Roy Solomon.



1650/14  
 1638/10

1020