

Process ID # 47205

R.P.O Vol. Fol.

C.T. Vol. 2969 Fol. 51

Vol. 5503 Fol. 149

165(1)

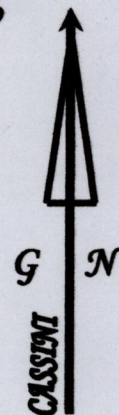
Ward of Savana Grande.

County of Victoria.

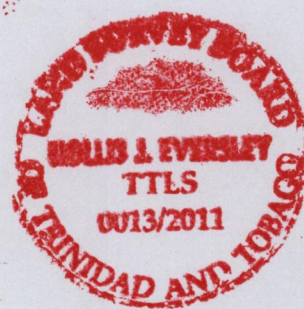
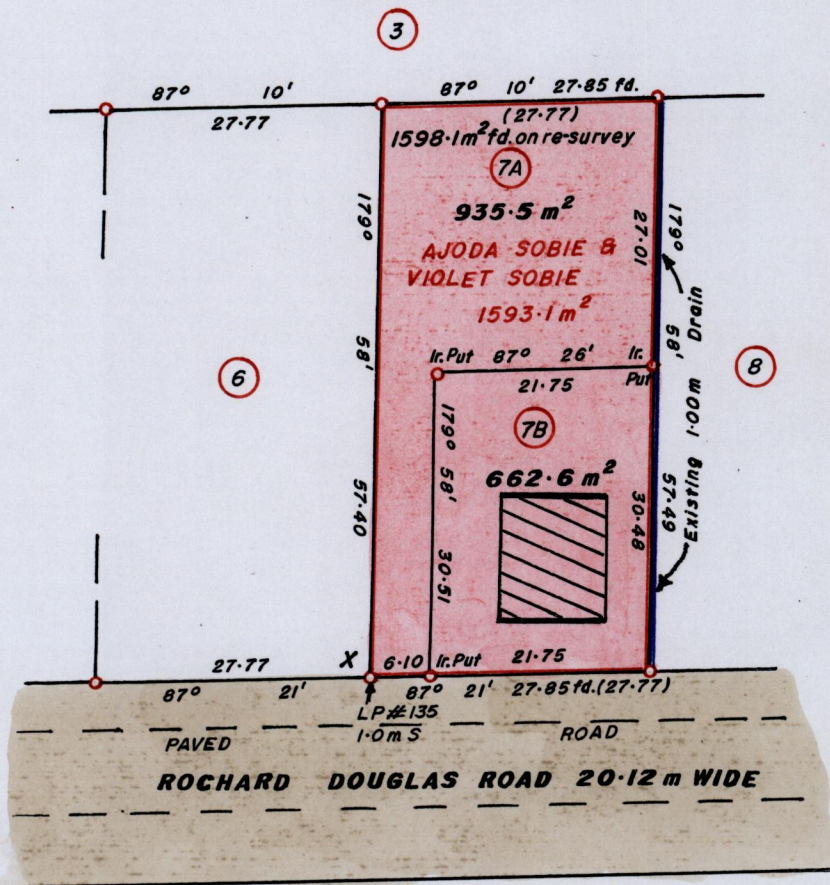
Cadastral Sheet G.14.H. 64D
2/b

112

679972 mE, 1126089 mN.
X- U.T.M. 20, WGS 84 (+/- 5.0m)
GPS Handheld Direct Obs.



Ajoda Sobie & Ors.



Bk. 1148 : 88.

SCALE 1:750.

Distances are in METRES

o Denotes Irons fd. except otherwise stated

Bearings are Cassini Grid based on Solar Observations.

PLAN of 2 Parcels of land coloured in PINK in the Ward of Savana Grande. Containing together one thousand five hundred and ninety eight point one square metres.

Surveyed by me, with due authority, in November 2010.

In accordance with Reg. 25(1) of the Land Surveyors' Regulations 1998, I certify that this plan is correct.

Checked by *M. J. [Signature]* 6/6/12

[Signature]

Entered Trinidad and Tobago Land Surveyor *[Signature]* 14th December 2010.

Ct. Vol. 5503 Fol. 149 - AJODA SOBIE, KHEMRAJ SOBIE & ANAALEE DEVI

LOT No.	CT. VOLUME & FOLIO	NAMES
7A	5503 Fol. 149	AJODA & KHEMRAJ SOBIE, ANAALEE DEVI
7B	5503 Fol. 159	VIOLET SOBIE, LENA S. SIEWSANKAR & SANGEETA



Now 1650/112
1A33/1A2