

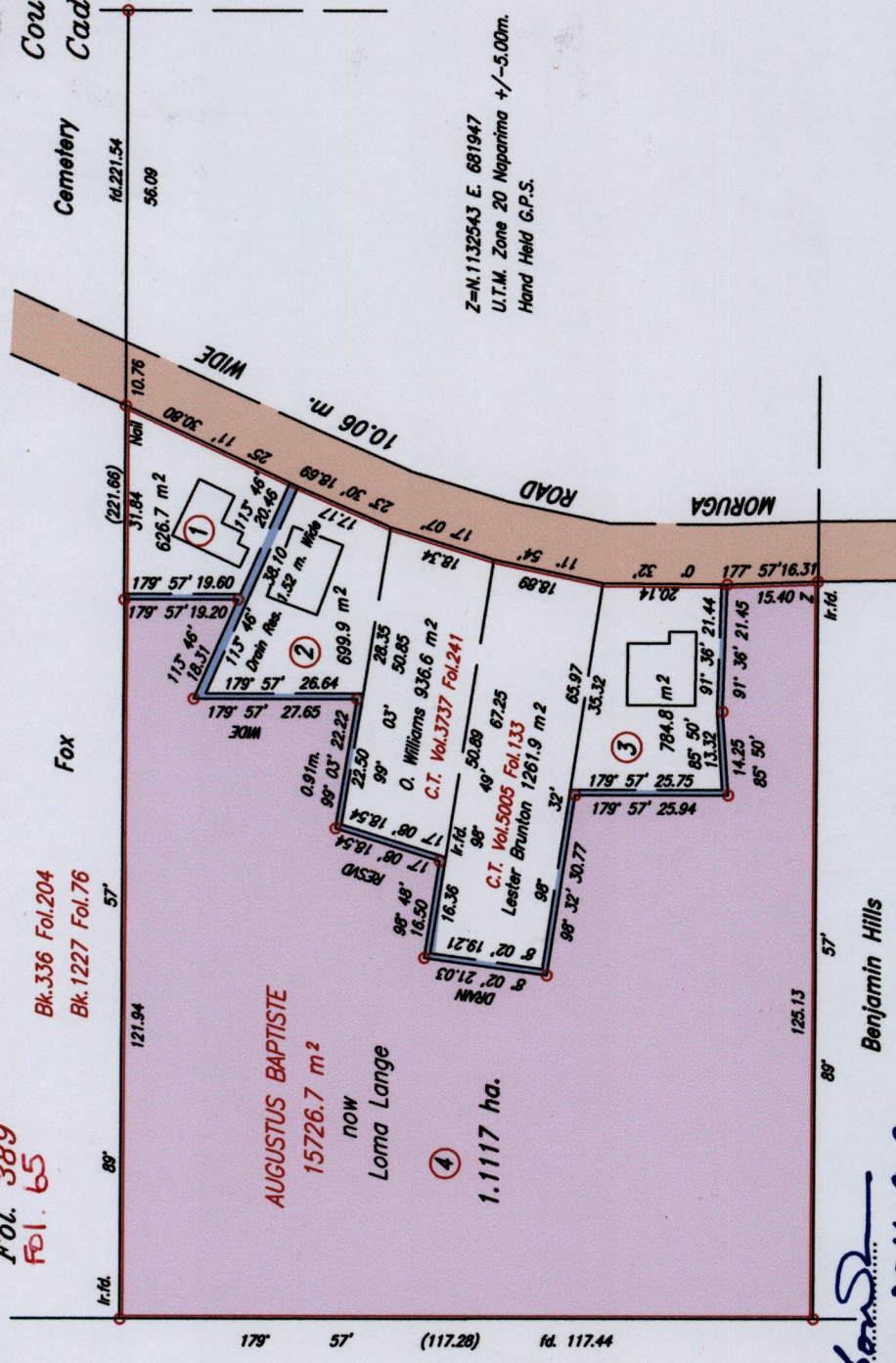
R.P.O. Vol 87  
C.T. Vol 3269  
C.T. Vol 5413

Process ID# 41833

Fol. 429  
Fol. 389  
Fol. 65

Bk.336 Fol.204  
Bk.1227 Fol.76

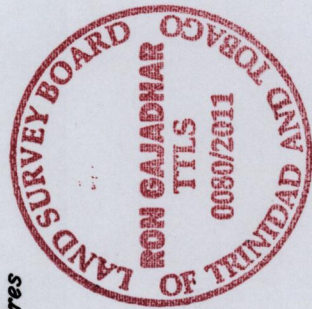
Ward of Ortoire  
County of Victoria  
Cadastral Sheet G.10.A. 64B  
1/6



Z=N.1132543 E. 681947  
U.T.M. Zone 20 Napanima +/-5.00m.  
Hand Held G.P.S.

165()

11



Scale 1 : 1250

Distances are in metres

o Denotes Iron found

Approved: *[Signature]*  
Director of Surveys 2011.9.30

Bearings are Cassini grid based on solar observations

Plan of a parcel of land coloured pink in the Ward of Ortoire

Containing one point one one seven hectares.

Surveyed by me, with due authority in July 2010

In accordance with Regulation 25 (1) of the Land Surveyors' Regulations 1998,

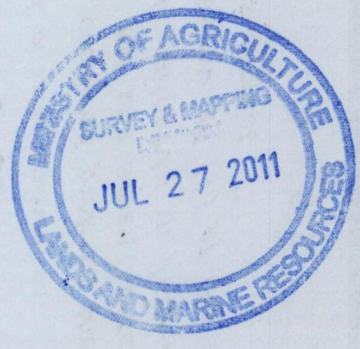
I certify that this plan is correct.

Checked by: *[Signature]* T.T.L.S.

Entered: *[Signature]* 05-12-2012  
Trinidad and Tobago Land Surveyor, 19.07.2011



1650/11  
1395/4



1650/11  
1395/4