

165(1)

1114

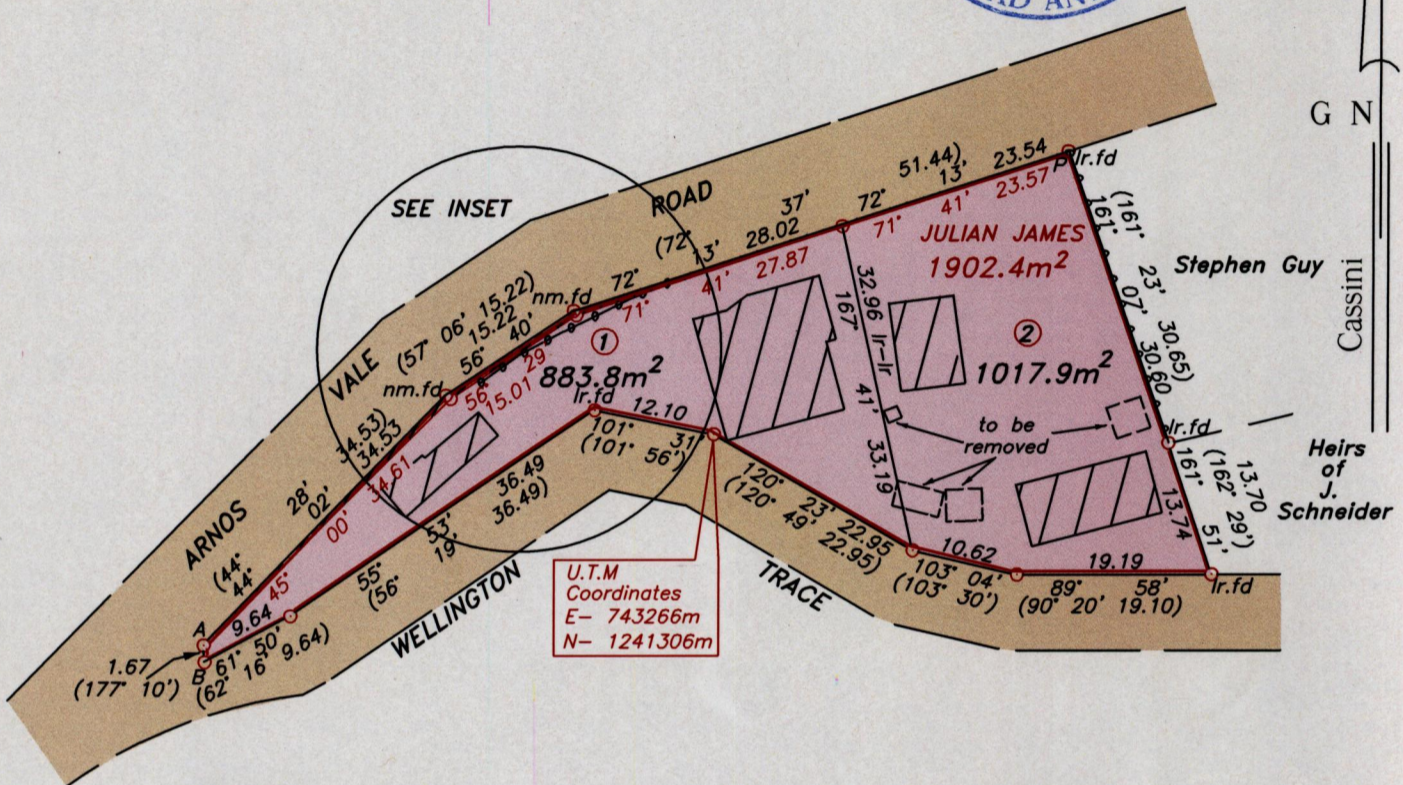
U.P.R.N.....

Cadastral Sheet 1.12.M ^{1C}/_{2/c/3}
Ward of Tobago
Parish of St. David
PLYMOUTH

R.P.O Vol. Fol.
C.T Vol. 3628 Fol. 415

Vol. 5465 Fol. 413

Vide Bk.1198 Fol.88

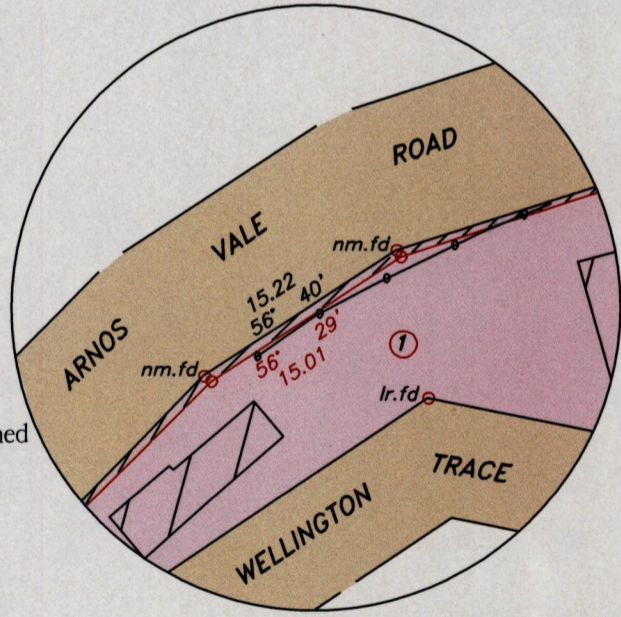


Wire Fence

Hatched area Occupied by Road 30.66m²

LINE	AZIMUTH	DISTANCE
A-B	176° 44'	1.67

INSET
SCALE 1:500



SCALE 1:750

Note- UTM Zone 20 (WGS 84) Coordinates obtained from hand held GPS receiver
± 6.00m

Approved *[Signature]*
Director of Surveys
2009.9.18

○ Denotes iron put, except otherwise stated.

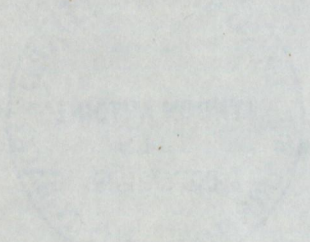
Bearings are grid based on solar observations

Distances are in metres

PLAN of 2 parcels of land coloured pink in the Ward of Tobago
Containing together one thousand nine hundred and one point seven square metres
Surveyed by me, with due authority on 8th May 2008 for Ferdinand Wheeler
In accordance with Regulation 25 (1) of the Land Surveyors' Regulations 1998, I certify that this plan is correct.

Checked by. *[Signature]* 9.09
Entered.....

[Signature]
9th September
Trinidad & Tobago Land Surveyor.....2009



now 1650/104
+500/210