

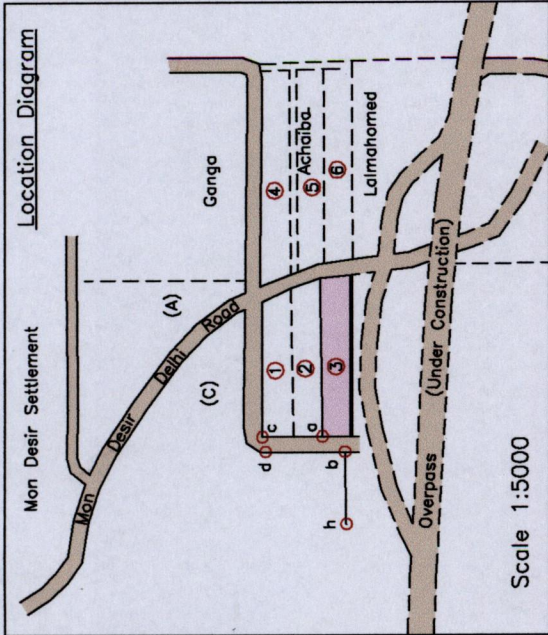
Mon Desir
Rousillac



From	To	Bearing	Distance
a	b	214° 32'	18.20
a	c	359° 29'	39.85
d	c	77° 59'	10.17
b	h	268° 52'	48.25
f	g	173° 57'	1.01

Legend

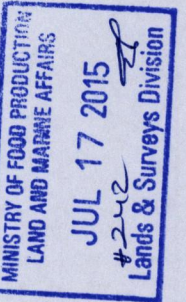
Electricity Pole	⊙ EP
Lightpole	⊙ LP
Water Tank	wt
Septic Tank	st
Gate	⊕
Fence	---
Existing Paved Road	---



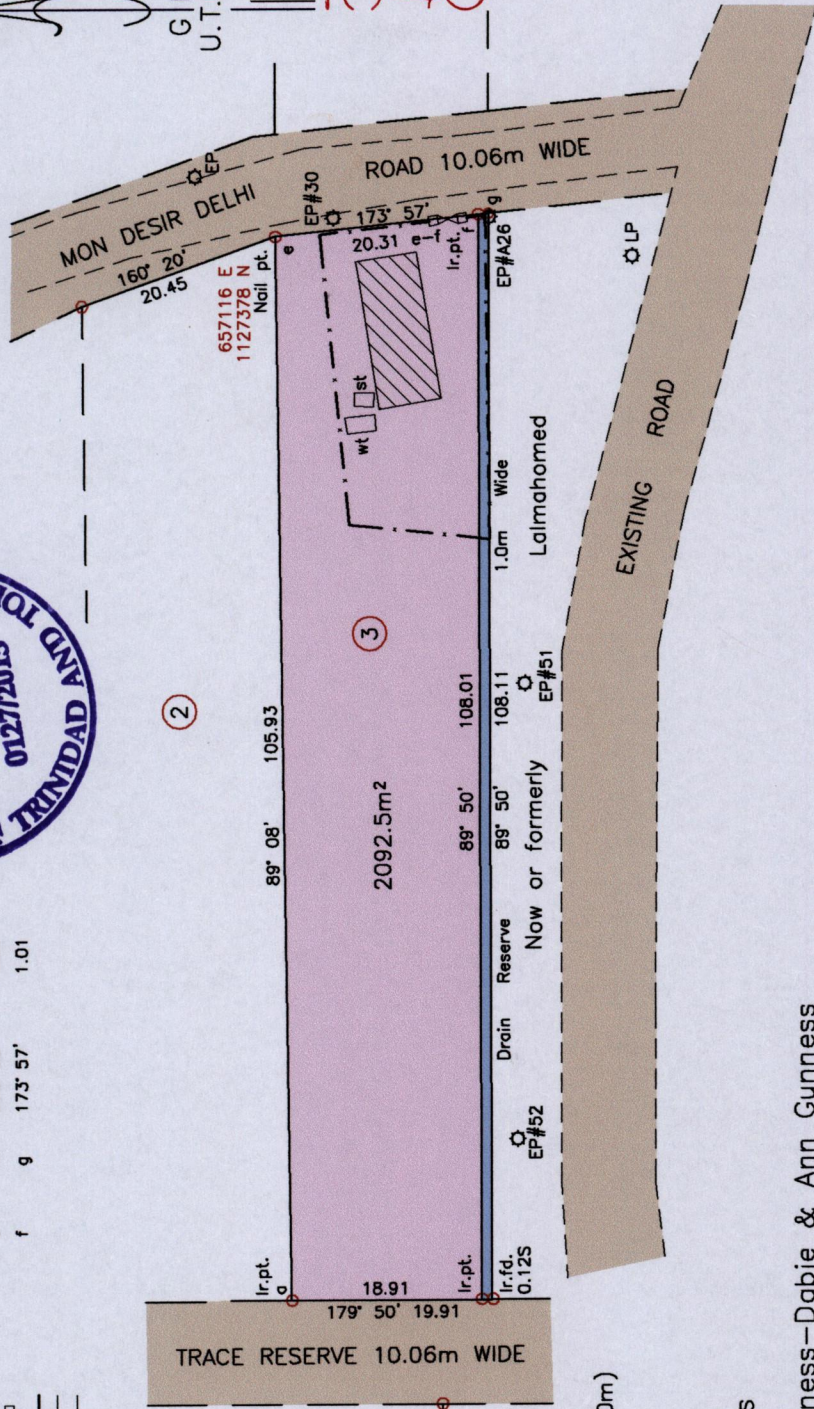
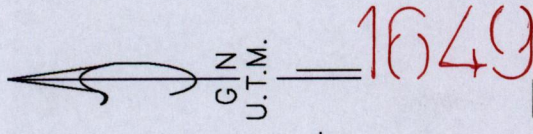
References:
Bk.470 Fol.250 (A2)
Bk.712 Fol.34
PLAN A.E.52

Notes: ○ Denotes Ir.f.d. unless otherwise indicated
Bearings are U.T.M. Grid based on Solar Observations
Previous survey by Ganesdath Ramcharitar in July 1994
Coordinates obtained by handheld GPS (UTM Zone 20, Naparima ± 5.0m)

PLAN of a parcel of land coloured pink in the Ward of Siparia
Containing two thousand and ninety two point five square metres
Surveyed by me, with due authority, in May 2015 for Cyntra Guinness-Dabie & Ann Guinness
Certified Correct in accordance with Regulation 25(1) of the Land Surveyors Regulations 1998.



Checked by
Entered on
John de Sormeaux
Trinidad and Tobago Land Surveyor, 25th June, 2015.



SCALE 1:750
Distances are in METRES

1783