

1649

158

U.P.R.N.

Process JD#110278

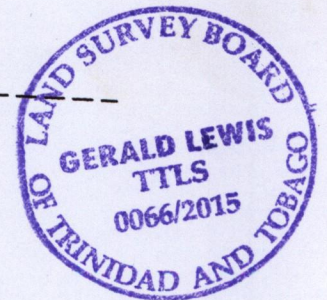
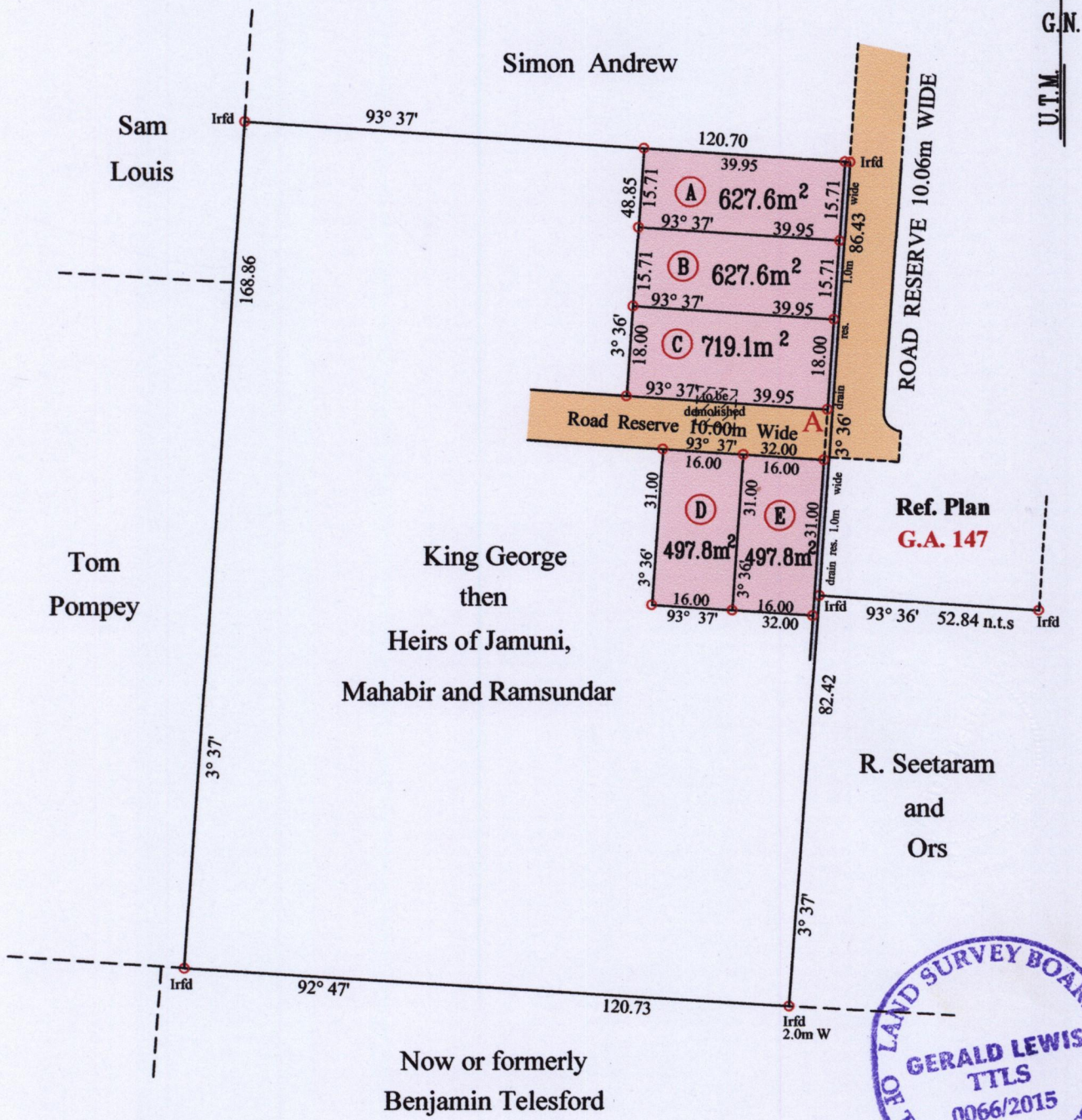
A - 659, 912mE, 1126,794mN
UTM ZONE 20, Naparima (+/- 2.00M)
Direct Observation-GPS Hand held

Cadastral Sheet G. 12. A., 63D
1/a

Ward of Siparia

County of St Patrick

See Registered Deed No.:
DE39210 of 1920



○ Denotes Iron Put unless otherwise stated

Bearings are U.T.M. Grid based on Solar Obs

PLAN of 5 Parcels of land coloured pink in the Ward of Siparia

Containing together two thousand nine hundred and sixty nine point nine square metres

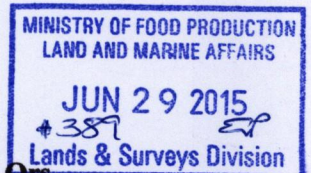
Surveyed by me, with due authority, in October 2012 at the request of Jesse Jitmansingh and Ors.

Certified Correct in accordance with Regulation 25(1) of the Land Surveyors Regulations 1998

Entered by

SCALE 1: 1250

Distances are in Metres



[Signature]
Trinidad & Tobago Land Surveyor 18.06/2015