

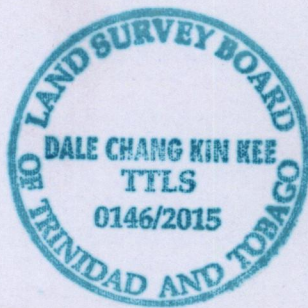
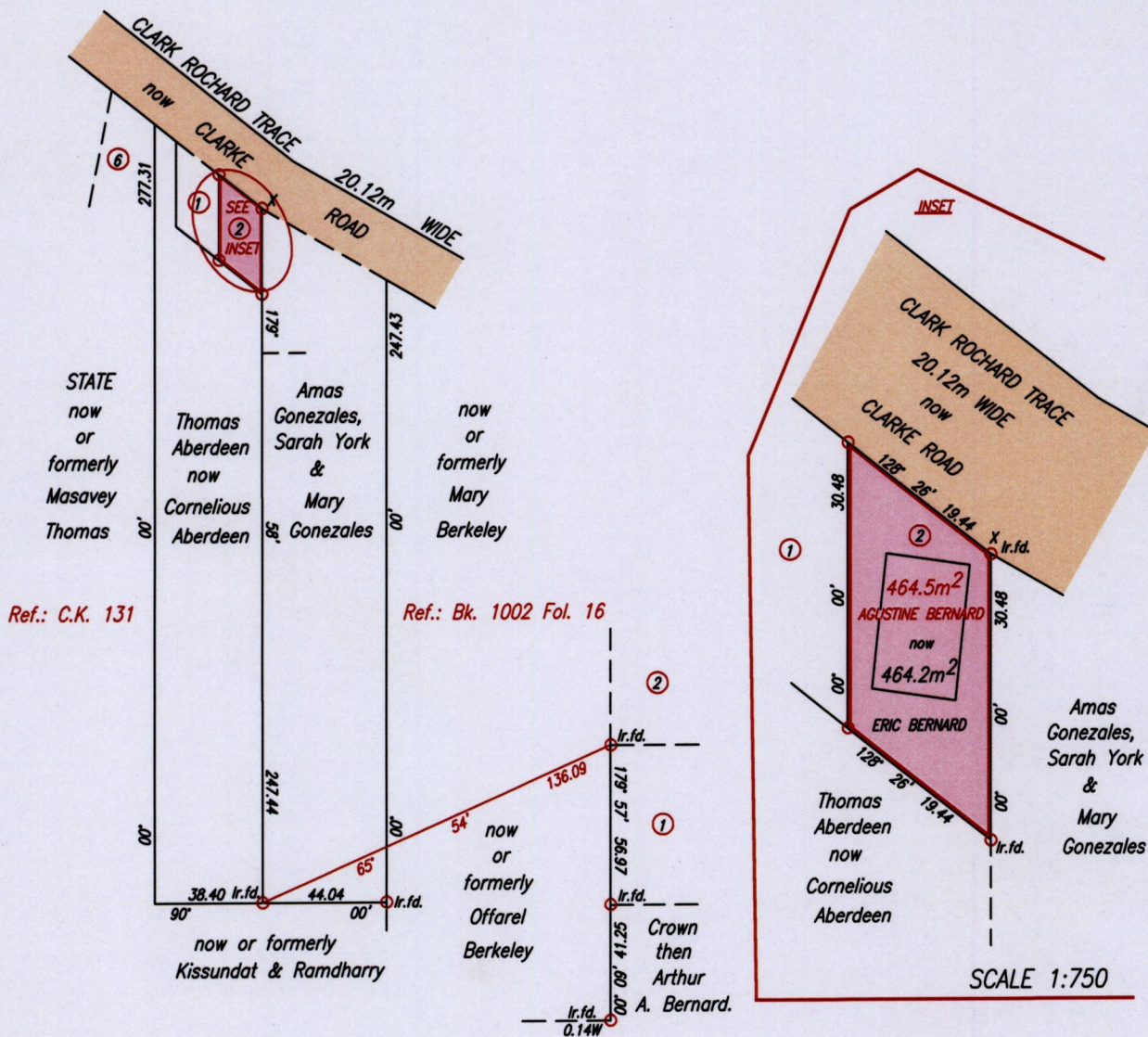
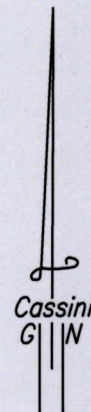
1649

146

R.P.O. Vol. 559 Fol. 571  
C.T. Vol. 5055 Fol. 59  
Ref.: Bk. 818 Fol. 213  
Process ID# 110210

Redefinition Plan

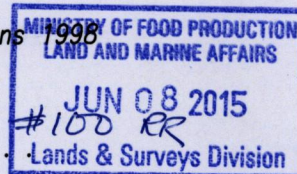
Cadastral Sheet G.14.I. 64D  
Ward of Siparia  
County of St. Patrick.  
No. 494 Clarke Road,  
Penal.



X : 674689mE, 1123435mN  
(U.T.M. 20, Naparima (+/-5m)  
Coordinates obtained from  
hand held GPS.

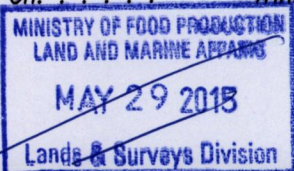
SCALE 1:2500  
Distances are in metres

○ Denotes Iron put except otherwise stated  
Bearings are Cassini Grid based on Solar Observations  
PLAN of a Parcel of land coloured pink in the Ward of Siparia  
Containing four hundred and sixty four point two square metres  
Redefined by me, with due authority, in January, 2015  
Certified Correct in accordance with Regulation 25 (1) of the Land Surveyors' Regulations 1998



*[Handwritten signature]*

Entered on... Trinidad & Tobago Land Surveyor. 20th January... 2015.



498