

Process ID# 110207

1649

Ward of Siparia

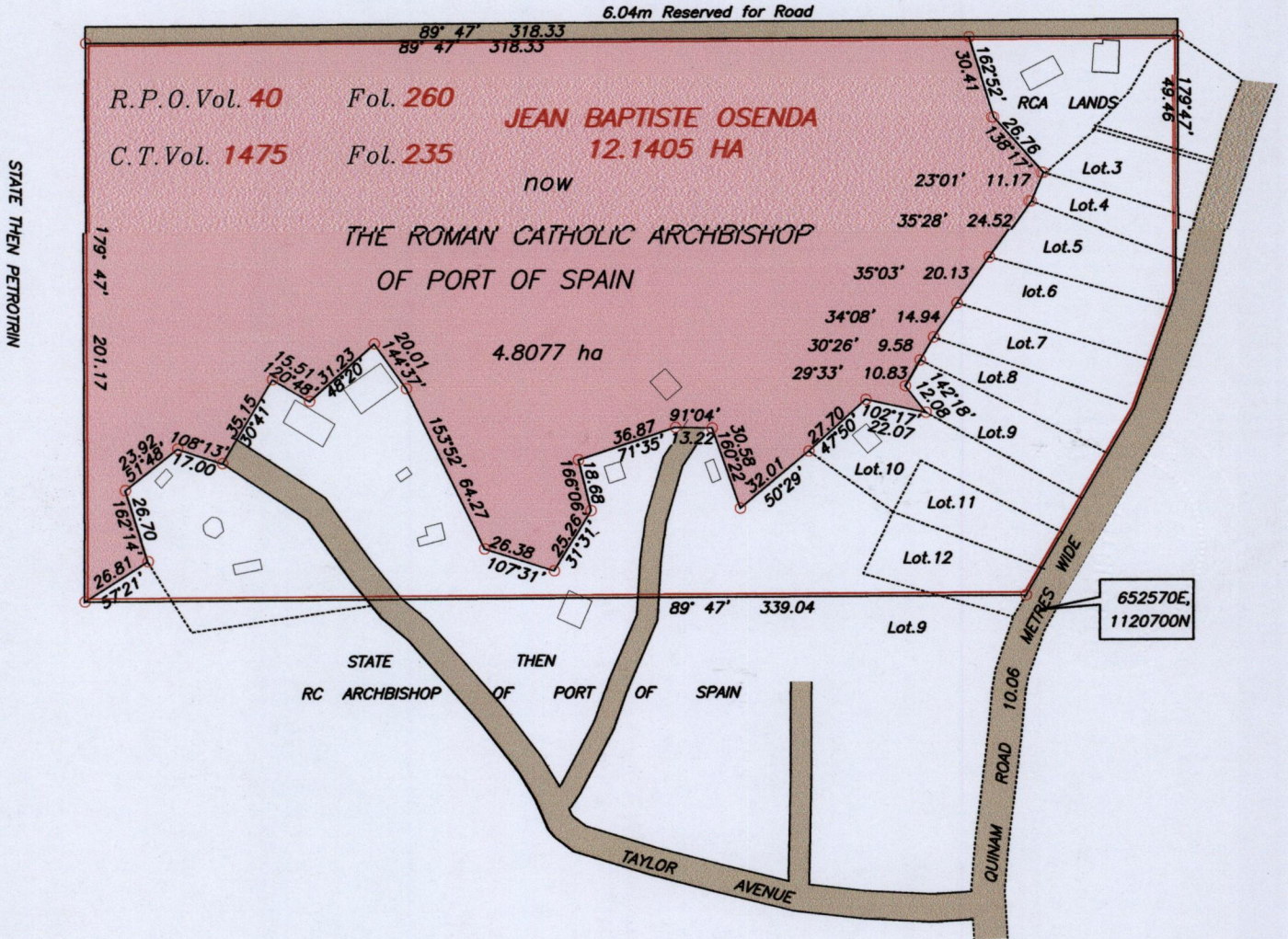
County of St. Patrick

Cadastral Sheet G.17.B. $\frac{73A}{2/b}$

144

PRELIMINARY PLAN

G N
UTM



See Bk:461/184

Co-ordinates are UTM zone 20N Naparima Datum +/-5m

Bearings are UTM grid based on Solar Observations

Note: To obtain compass bearings add 13 minutes.

SCALE St. Patrick

Distances are in metres



PLAN of a Parcel of land coloured Pink in the Ward of Siparia
Containing four point eight zero seven seven hectares

Surveyed by me, with due authority, in April & May 2015

April & May 2015 for HIS GRACE THE ROMAM CATHOLIC ARCHBISHOP OF PORT OF SPAIN

Certified correct in accordance with Regulation 25 (1)

of the Land Surveyors Regulations 1998.

Checked by.....

[Signature]

Entered..... Trinidad & Tobago Land Surveyor.....

25/5/15

RCA SIPARIA Quinam Taylor Ave 2015

