

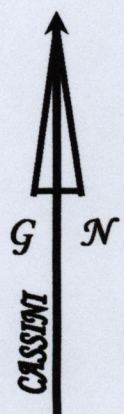
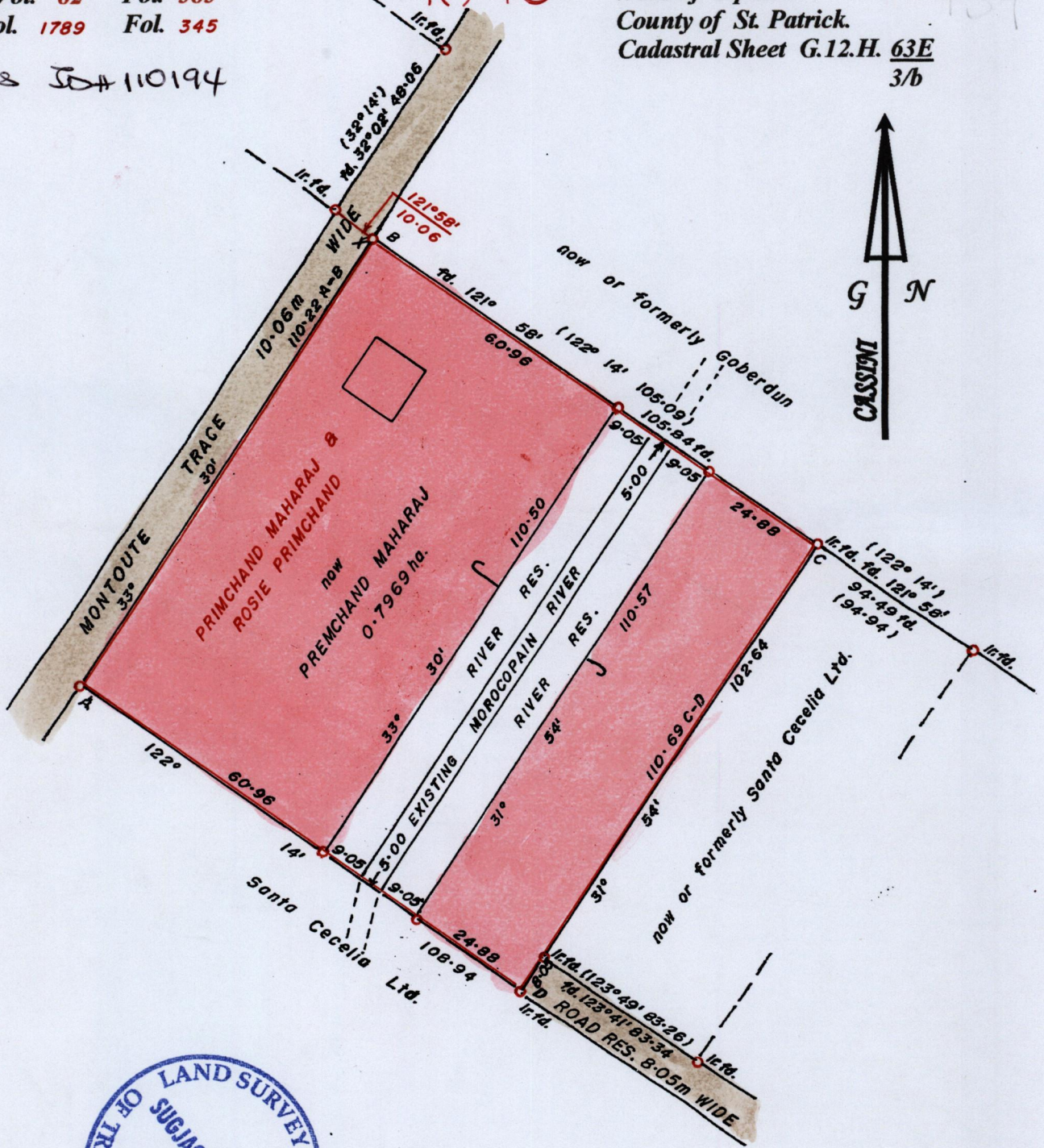
R.P.O Vol. 82 Fol. 585
C.T. Vol. 1789 Fol. 345

Process ID# 110194

1649

Ward of Siparia.
County of St. Patrick.
Cadastral Sheet G.12.H. 63E
3/b

139



X
 1124894 m N, 665268 m E.
 U.T.M.20, WGS 84 (+/-5.0m)
 GPS Handheld Direct Obs.

Bk. 1003 158
SCALE 1 : 1250.
 Distances are in METRES

Approved.....
 Director of surveys

Bearings are Cassini Grid based on Solar Observations.
 Note : To obtain compass bearings add/subtract 00 minutes.

PLAN of a Parcel of land coloured PINK in the Ward of Siparia.
 Containing zero point seven nine six seven hectare.
 Redefined by me, with due authority, in May 2014, for Khemraj Manohar.
 Certified correct in accordance with Regulation 25(1) of the Land Surveyors' Regulations 1998,

Checked by

S. Manohar
 Trinidad and Tobago Land Surveyor..... 7th August 2014.

Entered

