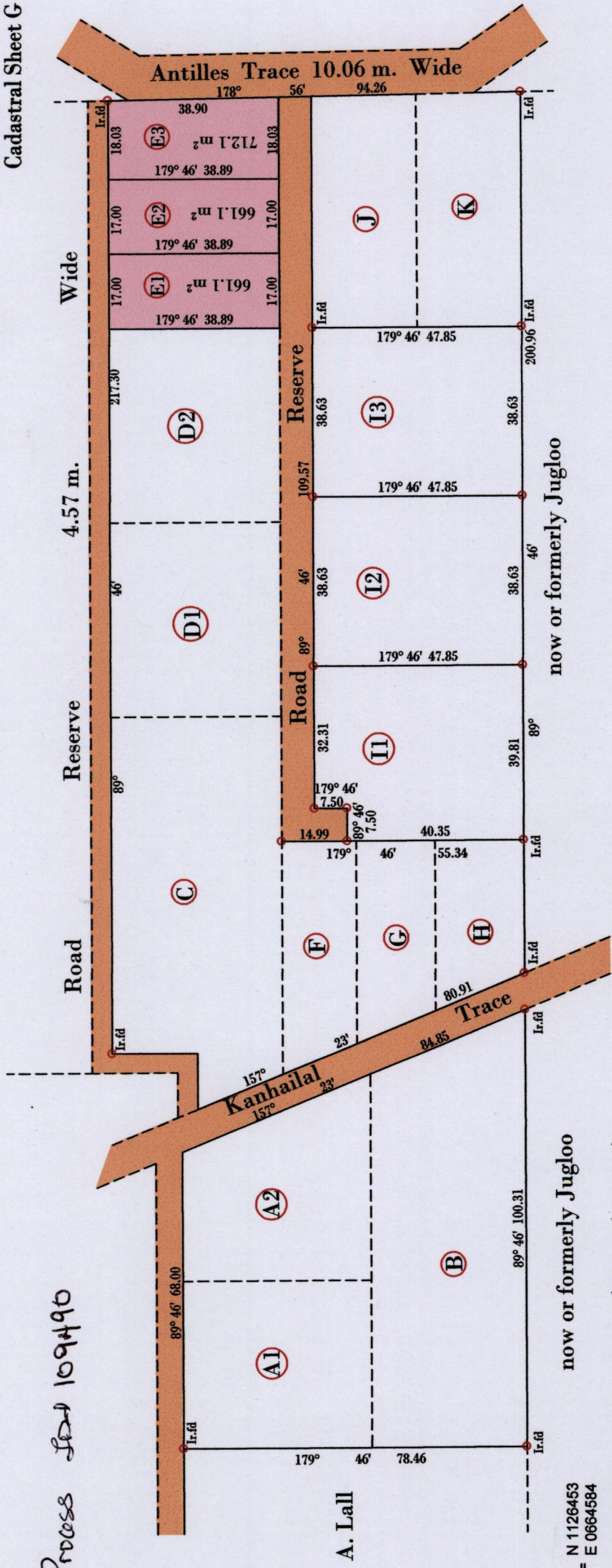


R.D. # D.E. 200401693732.

Process *See* 109490

Ward of Siparia
County of St. Patrick
Cadastral Sheet G 12 C, 63 E
1/a



A N 1126453
A = E 0664584

Note: U.T.M W.G.S 84 (GPS +/- 5.0m)

Denotes Iron put except stated otherwise.

Note: Bearings are U.T.M. grid based on solar observations Distances are in metres

PLAN of 3 Parcels of land coloured pink in the Ward of Siparia
Containing together two thousand and thirty four point three square metres
Surveyed by me, with due authority, in February 2015 for D.Seepersad
Certified correct in accordance with Regulation 25 (1) of the Land Surveyors Regulations 1998.

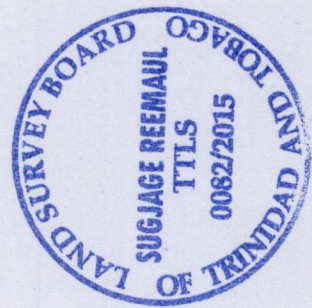
SCALE : 1:1250

..... *Sugjaje Remaul*

Entered on Trinidad & Tobago Land Surveyor *28 May* 2015

MINISTRY OF FOOD PRODUCTION
LAND AND MARINE AFFAIRS

MAY 29 2015
#341 *ten*
Lands & Surveys Division



1649

137

