

1649

Ward of Siparia
County of St. Patrick
Cadastral Sheet G 12 J, 63 D
4/a & 4/b

136

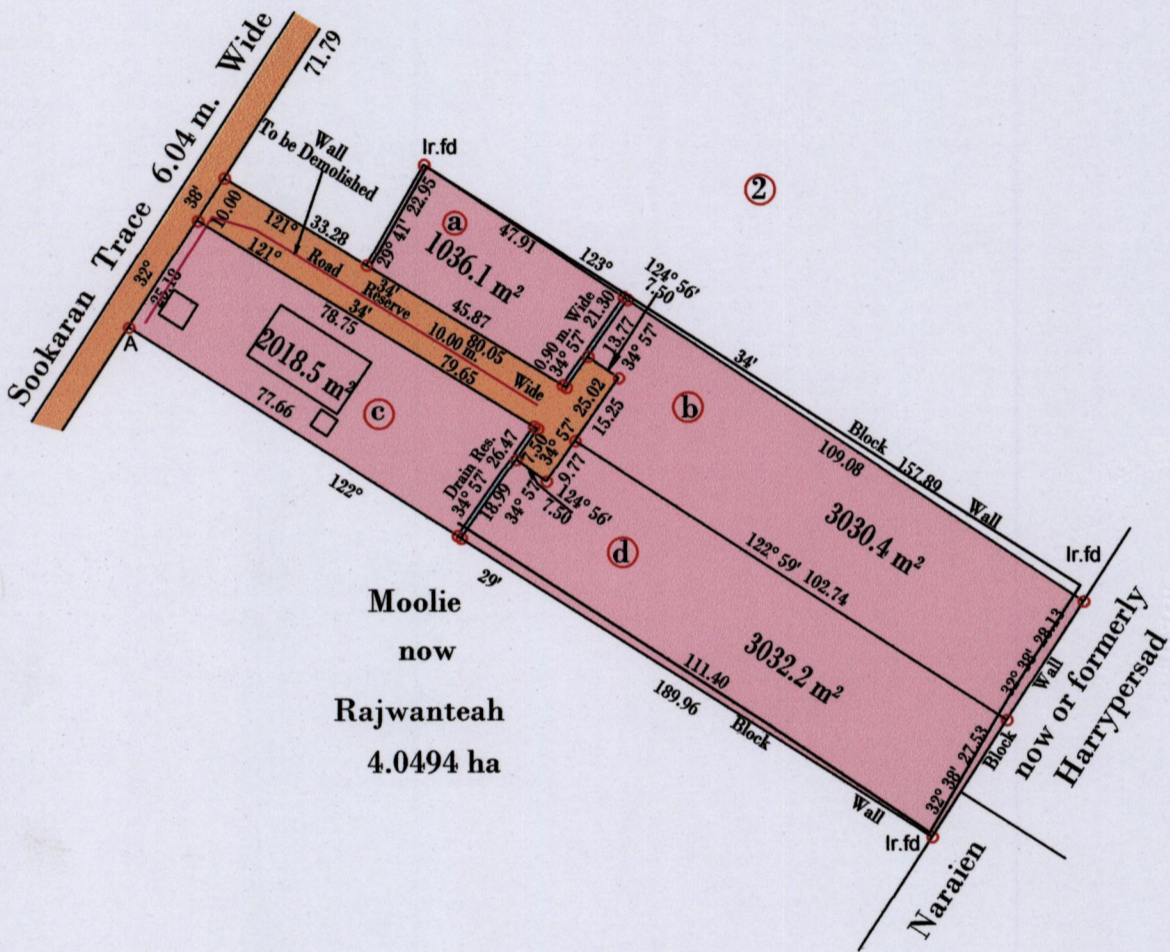
Process id - 109489

Amended Plan

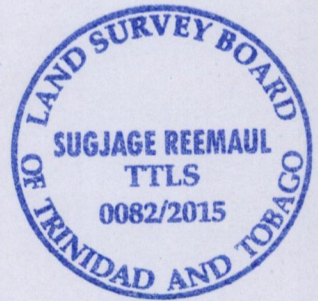
Sookaran Tr. Saltmine,
Thick Village, Siparia



Cassini



A = N 1124744
E 0662078



Note: U.T.M Naparima 20 (GPS +/- 5.0m)

o Denotes Iron put except stated otherwise.

SCALE : 1:1500

Note: Bearings are Cassini grid based on solar observations

Distances are in metres

PLAN of 4 Parcels of land coloured pink in the Ward of Siparia

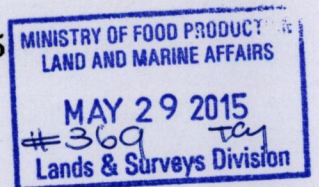
Containing together nine thousand one hundred and seventeen point two square metres

Surveyed by me, with due authority, in April 2015 for Roopnarine & Rajendra Sirju

Certified correct in accordance with Regulation 25 (1) of the Land Surveyors Regulations 1998.

..... Sugjagi Reemaul

Entered on Trinidad & Tobago Land Surveyor 2015



HGP/414