

U.P.R.N.

1649

1288

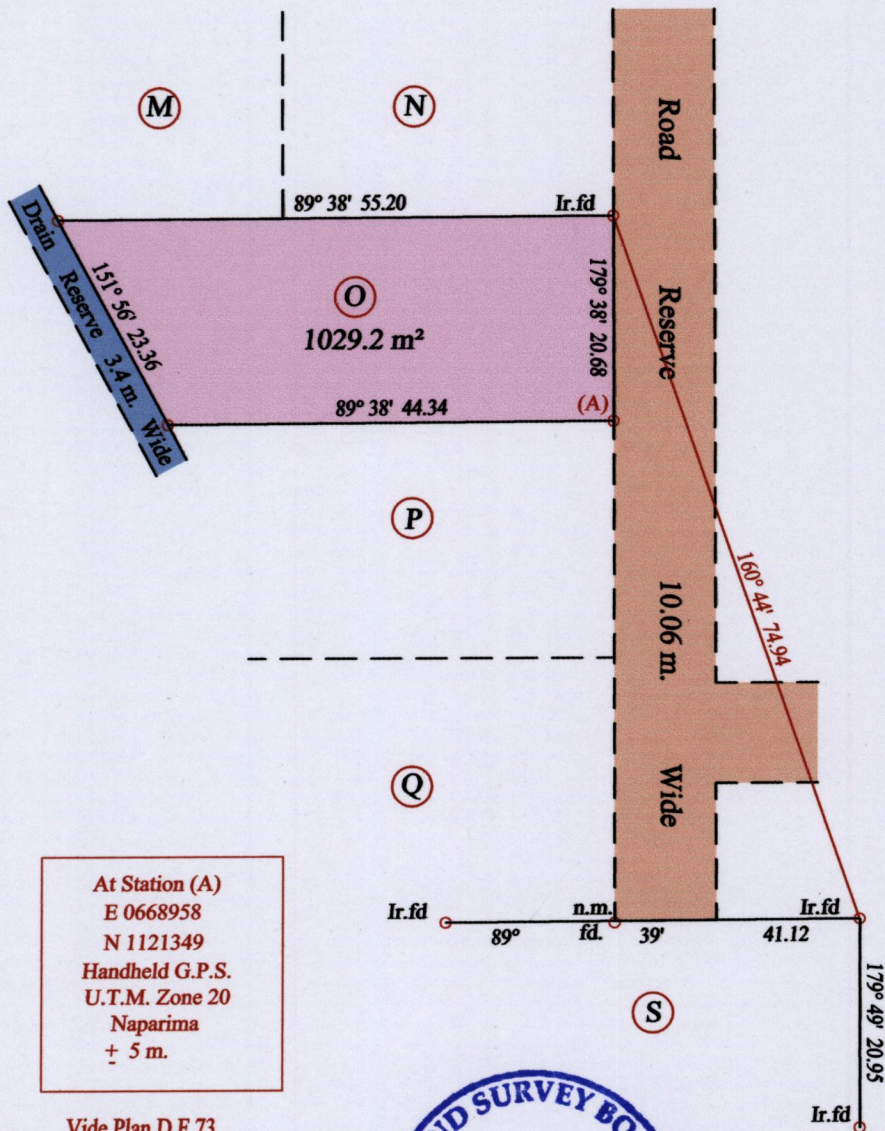
Process ID#109471

Ward of Siparia
County of St. Patrick

Cadastral Sheet G.18.B. $\frac{73 C}{1/a}$

GN

U.T.M.



At Station (A)
 E 0668958
 N 1121349
 Handheld G.P.S.
 U.T.M. Zone 20
 Naparima
 ± 5 m.

Vide Plan D.F.73



○ Denotes Iron put except stated otherwise.

SCALE : 1:750

Note: Bearings are U.T.M. grid based on solar observations

Distances are in metres

PLAN of a Parcel of land coloured pink in the Ward of Siparia

Containing one thousand and twenty nine point two square metres

Surveyed by me, with due authority, in May 2015

Certified Correct in accordance with Regulation 25(1) of the Land Surveyors Regulations 1998

Checked by *K. Lee Wen*

Entered on Trinidad & Tobago Land Surveyor *May 20* 2015

