

Process ~~1109~~ 466  
 U.P.R.N.

1649

126

Cadastral Sheet G. 6. H., 63A  
 3/d

Ward of Siparia

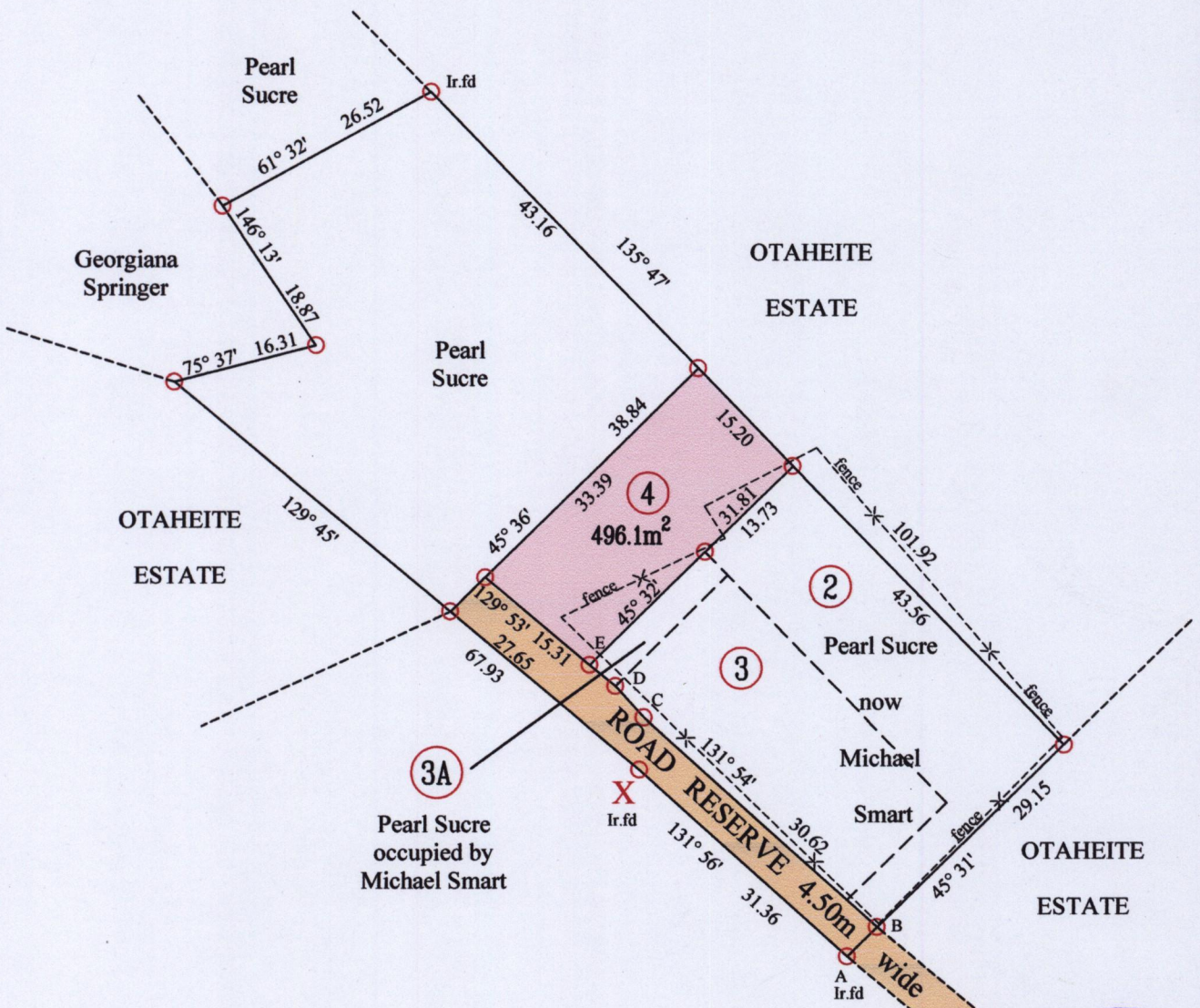
County of St Patrick

**OTAHEITE ESTATE  
 SOUTH OROPOUCHE**

X - 658,803mE, 1130,715mN  
 UTM ZONE 20, Naparima (+/- 3.00M)  
 Direct Observation-GPS Hand held

Line	Brg.	Dist.
A - B	45° 25'	4.69
C - D	317° 33'	4.74
D - E	309° 09'	3.75

G.N.  
 U.T.M



○ Denotes Iron Put unless otherwise stated

SCALE 1: 750  
 Distances are in Metres

Bearings are U.T.M Grid based on Solar Obs

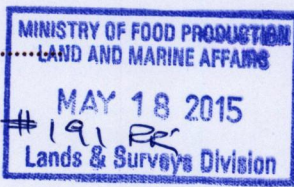
PLAN of a Parcel of land coloured pink in the Ward of Siparia

Containing four hundred and ninety six point one square metres

Surveyed by me, with due authority, in April 2015 at the request of Pearl Sucre and Stephen Marcelin

Certified Correct in accordance with Regulation 25(1) of the Land Surveyors Regulations 1998

Entered by .....



*Gerald Lewis*  
 Trinidad & Tobago Land Surveyor 15/05/2015