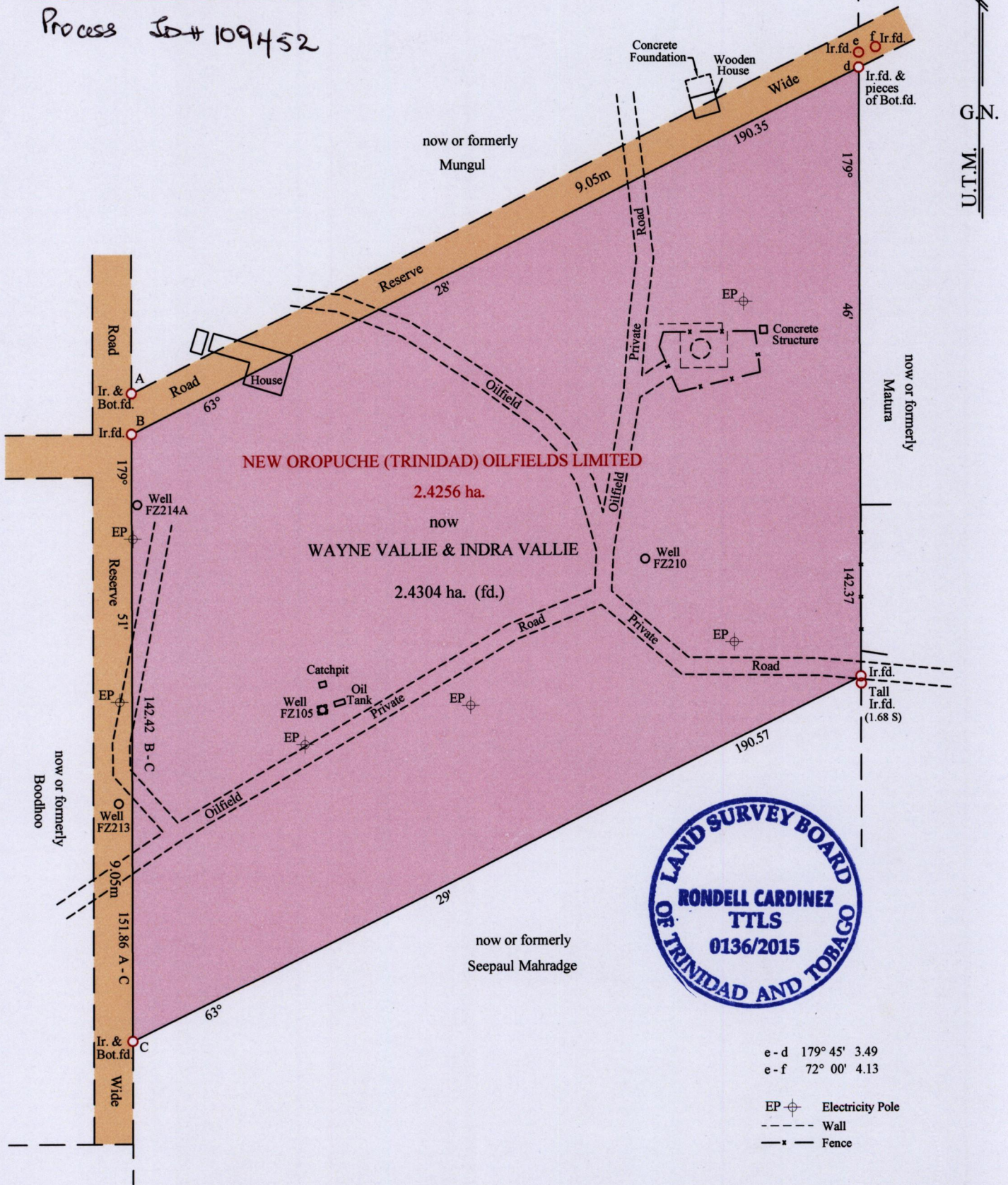


C : 1124387mN, 657616mE
U.T.M. ZONE 20N, Naparima (+/- 5.0m)
Direct Observation - G.P.S. Handheld

Process ID# 109452



Bearings are U.T.M. Grid based on Solar Obs.

SCALE 1: 1250

PLAN of a Parcel of land coloured pink in the **Ward of Siparia**

Distances are in Metres

Containing **two point four three zero four hectares**

Redefined by me, with due authority, in April 2015 at the request of **Wayne Vallie & Indra Vallie**

Certified Correct, in accordance with Regulation 25(1) of the Land Surveyors Regulations 1998

Entered on

Rondell Cardinez

MINISTRY OF FOOD PRODUCTION
LAND AND MARINE AFFAIRS
MAY - 4 2015
Lands & Surveys Division

Checked by

Trinidad & Tobago Land Surveyor 04/MAY/2015