

Cadastral Sheet G.12.N., $\frac{73A}{2/b}$

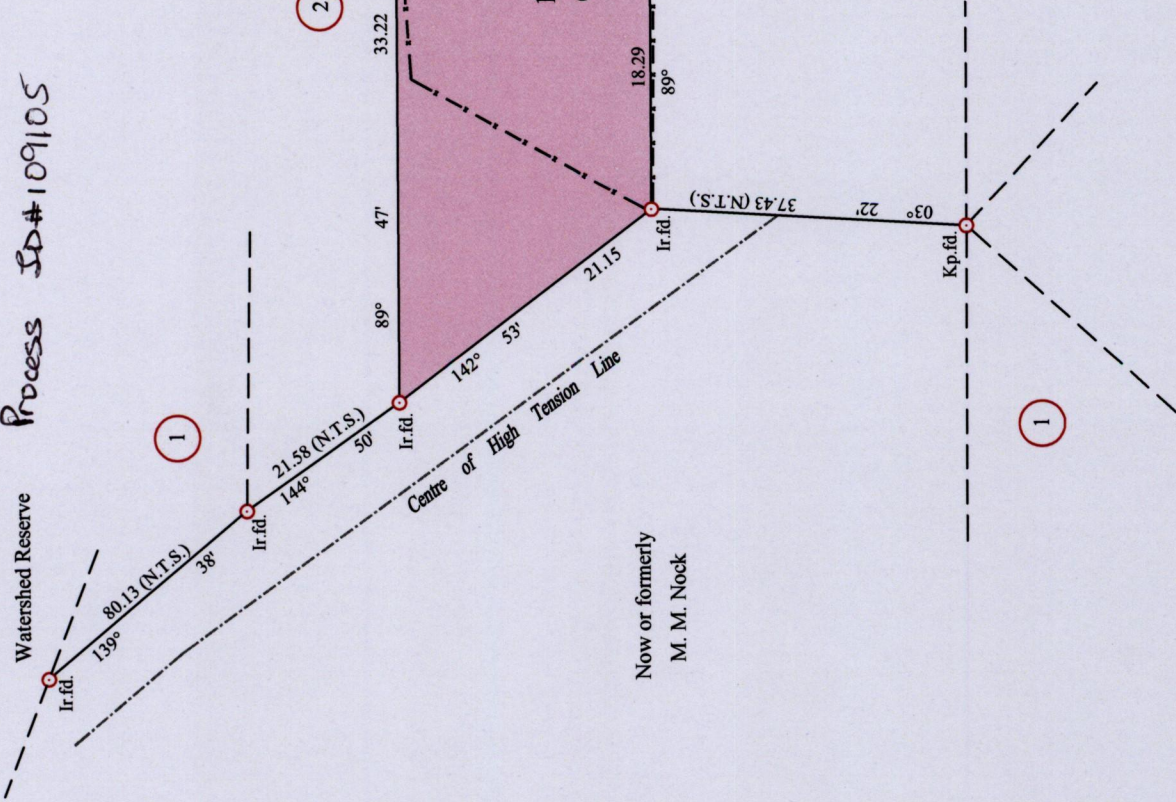
Ward of Siparia

County of St. Patrick

Siparia

REDEFINITION PLAN

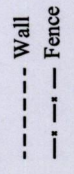
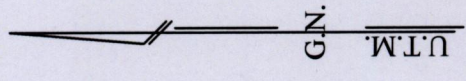
Process ID# 109105



Nail pt. A : 1121935mN, 663114mE
 U.T.M. ZONE 20N, Naparima (+/- 5.0m)
 Direct Observation - G.P.S. Handheld

2 Bk. 923 Fol. 181

4 Bk. 936 Fol. 23



SCALE 1 : 500

Distances are in Metres

Bearings are U.T.M. Grid based on Solar Obs.

PLAN of a Parcel of land coloured pink in the **Ward of Siparia**

Containing **one thousand and forty seven point nine square metres**

Redefined by me, with due authority in March 2015 at the request of **Keith Amour**

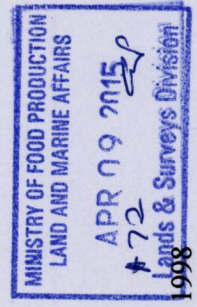
Certified Correct, in accordance with Regulation 25(1) of the Land Surveyors Regulations 1998

Entered on

Checked by

Rondell Cardinez

Trinidad & Tobago Land Surveyor 07/APRIL/2015



1649

111