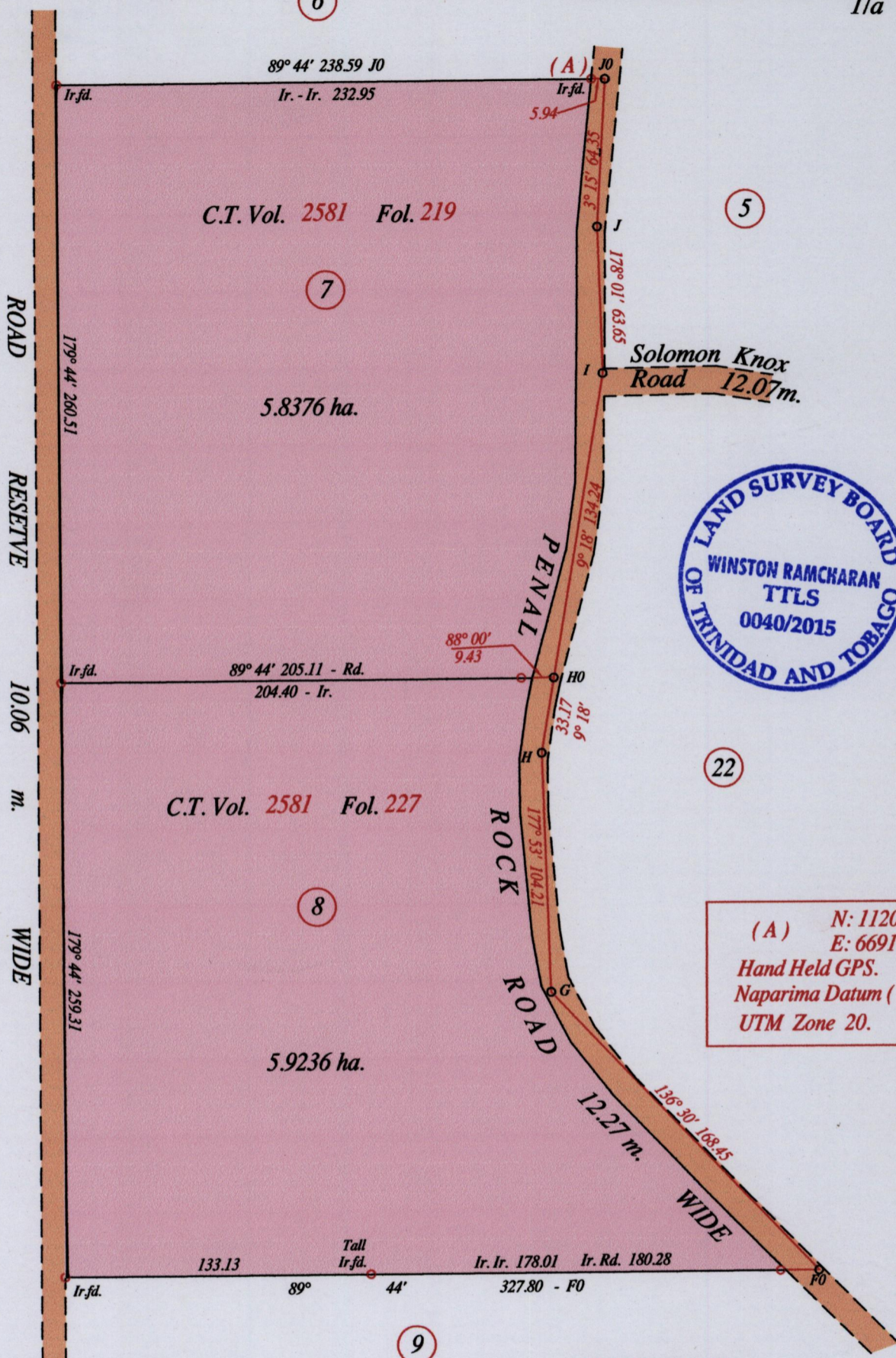


1649

106

Process J24109092

Ward of Siparia
County of St. Patrick
Cadastral Sheet G 18 B, $\frac{73 C}{11a}$



o Denotes Iron put except stated otherwise.

SCALE : 1:2500

Note: Bearings are U.T.M. grid based on solar observations Distances are in metres

PLAN of 2 Parcels of land coloured pink in the Ward of Siparia
Containing eleven point seven six one two hectares

Re-defined by me, with due authority, in March 2015 at the request of Mohabiepersad Latchmansingh & Ors.
Certified correct in accordance with Regulation 25 (1) of the Land Surveyors Regulations 1998.

Winston Ramcharan

Entered on Trinidad & Tobago Land Surveyor 24th March 2015

MINISTRY OF FOOD PRODUCTION
LAND AND MARINE AFFAIRS

APR - 1 2015
#8
Lands & Surveys Division