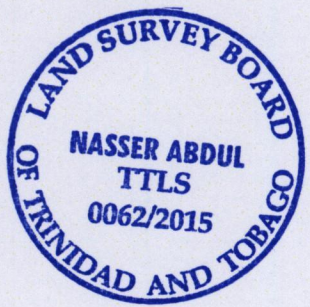
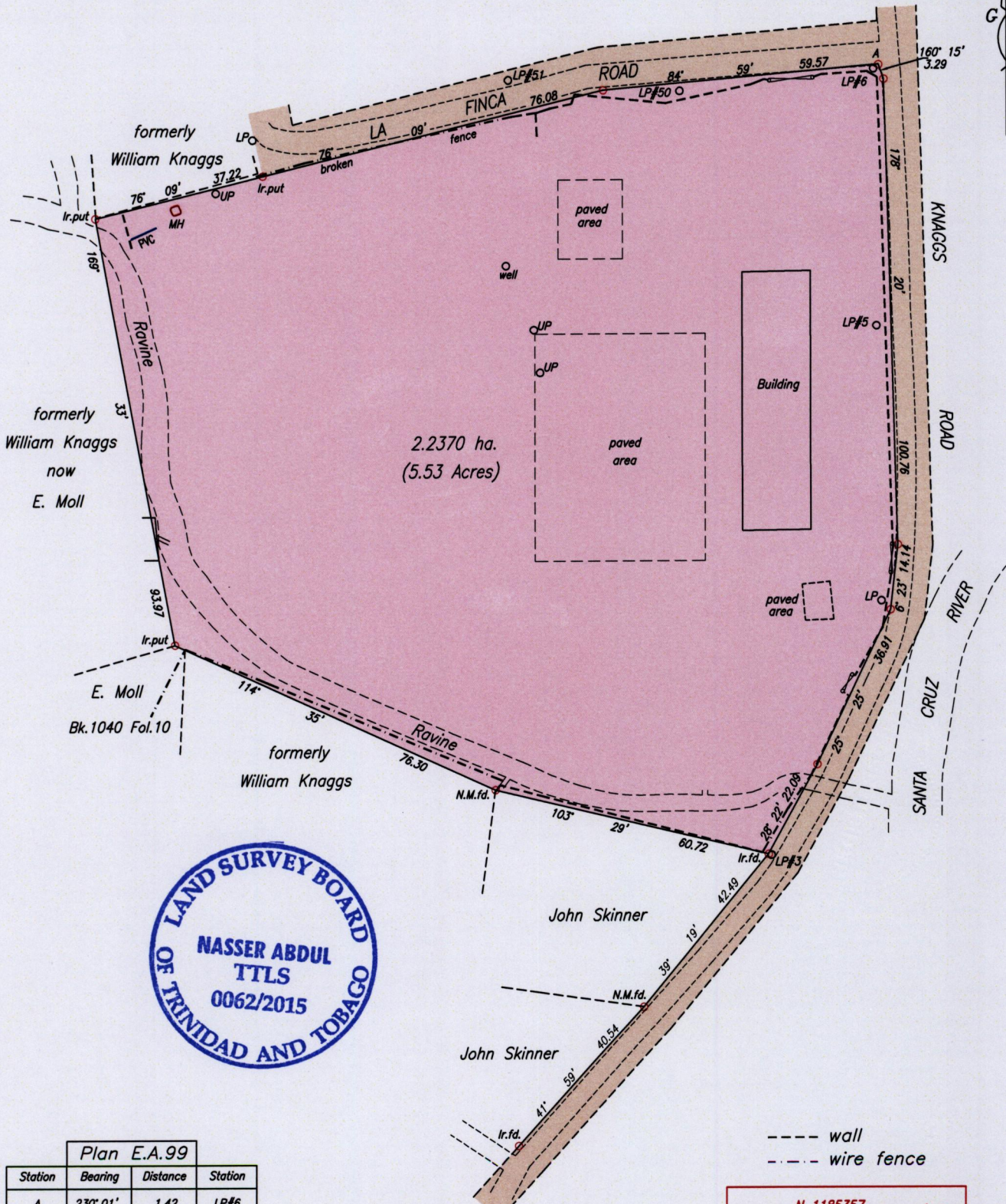
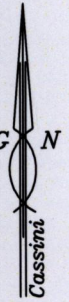


Process ID #10988

Cadastral Sheet B.12.E. 13B  
Ward of Diego Martin 4/a  
County of St. George  
Akal Trace, Santa Cruz



| Plan E.A.99 |          |          |         |
|-------------|----------|----------|---------|
| Station     | Bearing  | Distance | Station |
| A           | 230° 01' | 1.42     | LP#6    |
| A           | 262° 41' | 43.17    | LP#50   |
| A           | 267° 52' | 80.02    | LP#51   |
| A           | 180° 30' | 56.42    | LP#5    |

A Nail N 1185357  
E 667248 U.T.M. +/- 5m  
Coordinates are based on Hand held GPS W.G.S.84 Zone 20

SCALE 1/1250  
Distances are in metres

○ Denotes Nail put unless otherwise stated  
Bearings are U.T.M. Grid based on Solar Observations  
PLAN of a Parcel of land coloured pink in the Ward of Diego Martin  
Containing two point two three seven zero hectares  
Surveyed by me, with due authority, in May 2015 for Kirpalani Property Developers Limited  
Certified Correct in accordance with Regulation 25 (1) of the Land Surveyors' Regulations 1998

Entered  
Checked by  
MINISTRY OF FOOD PRODUCTION  
AND MARINE AFFAIRS  
JUN 02 2015  
Lands & Surveys Division

*[Signature]*  
Trinidad & Tobago Land Surveyor .....2015