

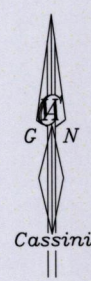
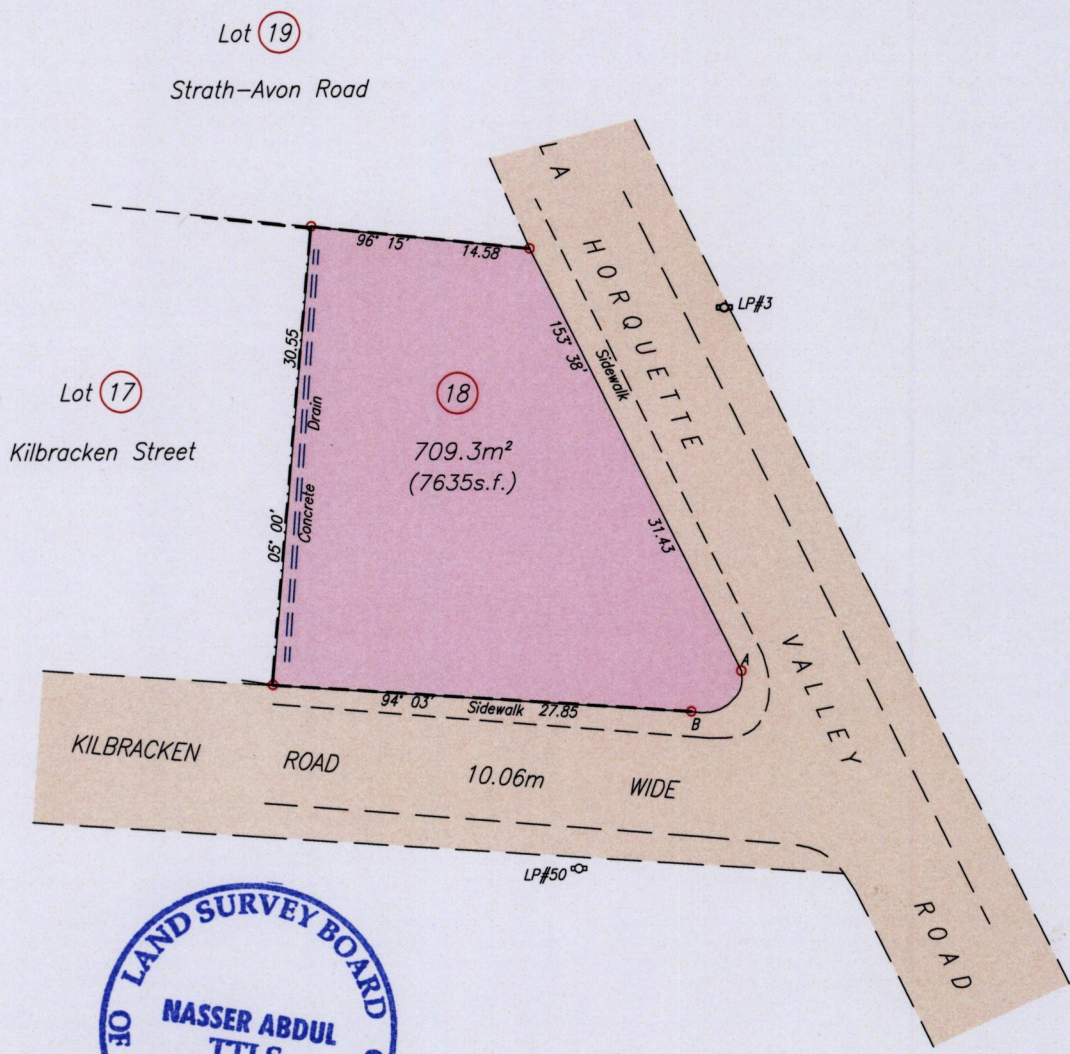
1639

220

Process JDA 109520

Cadastral Sheet A.19.C  $\frac{12F}{2/c}$   
Ward of Diego Martin  
County of St. George

Lot 18 Kilbracken Road,  
Glencoe

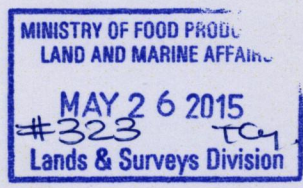


Station	Bearing	Distance	Station
A	231° 29'	4.27	B

Plan C.E. 24			
A	- LP#50	219° 55'	16.92
A	- LP#3	357° 32'	24.14
A	N. 1180 913	Hand Held GPS	
	E. 0656 171	WGS84 Zone20	

--- Wall  
 - - - - - Wire Fence

SCALE 1/500  
 Distances are in metres



o Denotes Iron Put unless otherwise stated  
 Bearings are Cassini Grid based on Solar Observations  
 Plan of a Parcel of land coloured pink in the Ward Diego Martin  
 Containing seven zero nine point three square metres  
 Surveyed by me, with due authority, in May 2015 for Nicole Patrick  
 Certified Correct In accordance with Regulation 25 (1) of the Land Surveyors' Regulations 1998,

*Nasser Abdul TTLS*  
 25<sup>th</sup> May

Entered on ..... Trinidad & Tobago Land Surveyor ..... 2015