

Process *LD# 109449*

1639

Cadastral Sheet ^{12F} 2/d A.19.C.

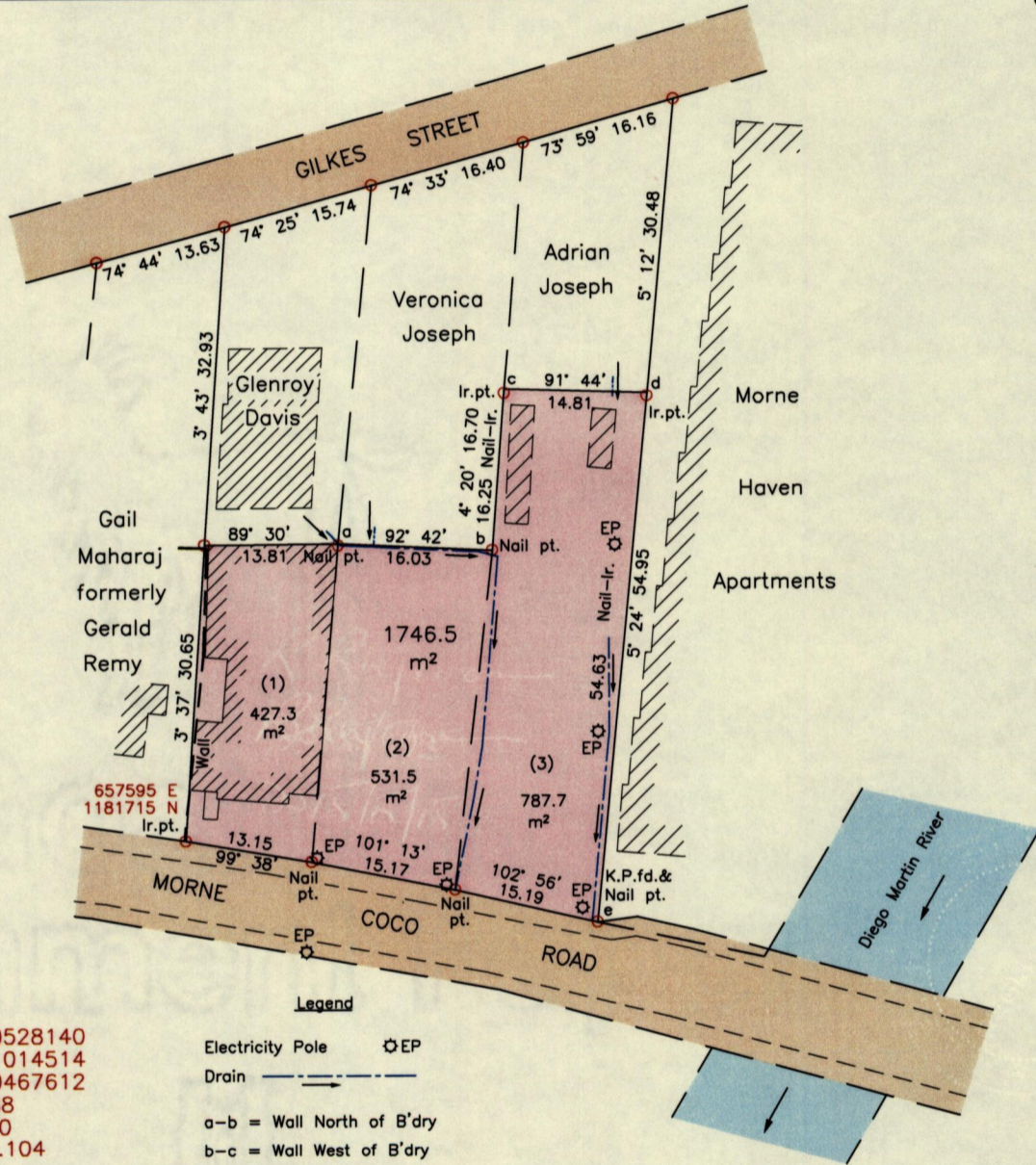
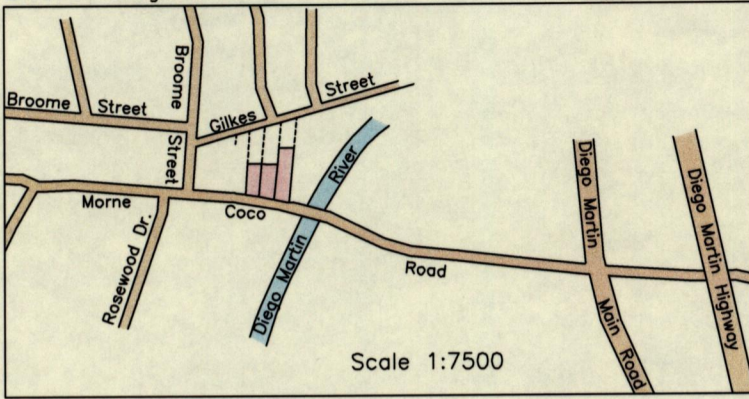
Ward of Diego Martin
County of St. George

212

Diego Martin

CONSOLIDATED PLAN

Location Diagram

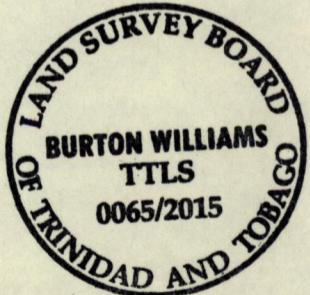


References:
 DE# 201100528140
 DE# 201001014514
 DE# 200700467612
 PLAN E.C.188
 PLAN F.A.180
 Bk.1369 Fol.104

Legend
 Electricity Pole \odot EP
 Drain \dashrightarrow
 a-b = Wall North of B'dry
 b-c = Wall West of B'dry
 c-d = Wall South of B'dry
 d-e = Wall East of B'dry

SCALE 1:750
 Distances are in metres

Notes: \circ Denotes Ir.f.d. unless otherwise stated
 Bearings are U.T.M. Grid based on Solar Observations
 Coordinates obtained using handheld GPS (UTM Zone 20, Naparima \pm 5.0m)



PLAN of a parcel of land coloured pink in the Ward of Diego Martin
 Containing one thousand seven hundred and forty six point five square metres
 Prepared by me, with due authority, in March 2015 for Arthur De Freitas
 In accordance with Regulation 25(1) of the Land Surveyors Regulations 1998, I certify that this plan
 represents the parcels to be consolidated.

Checked by *Burton Will*

Entered on Trinidad and Tobago Land Surveyor, *15/5/2015*

