

Process ID# 109403

1639

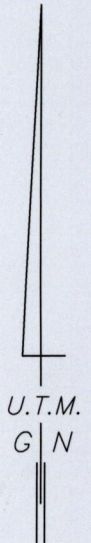
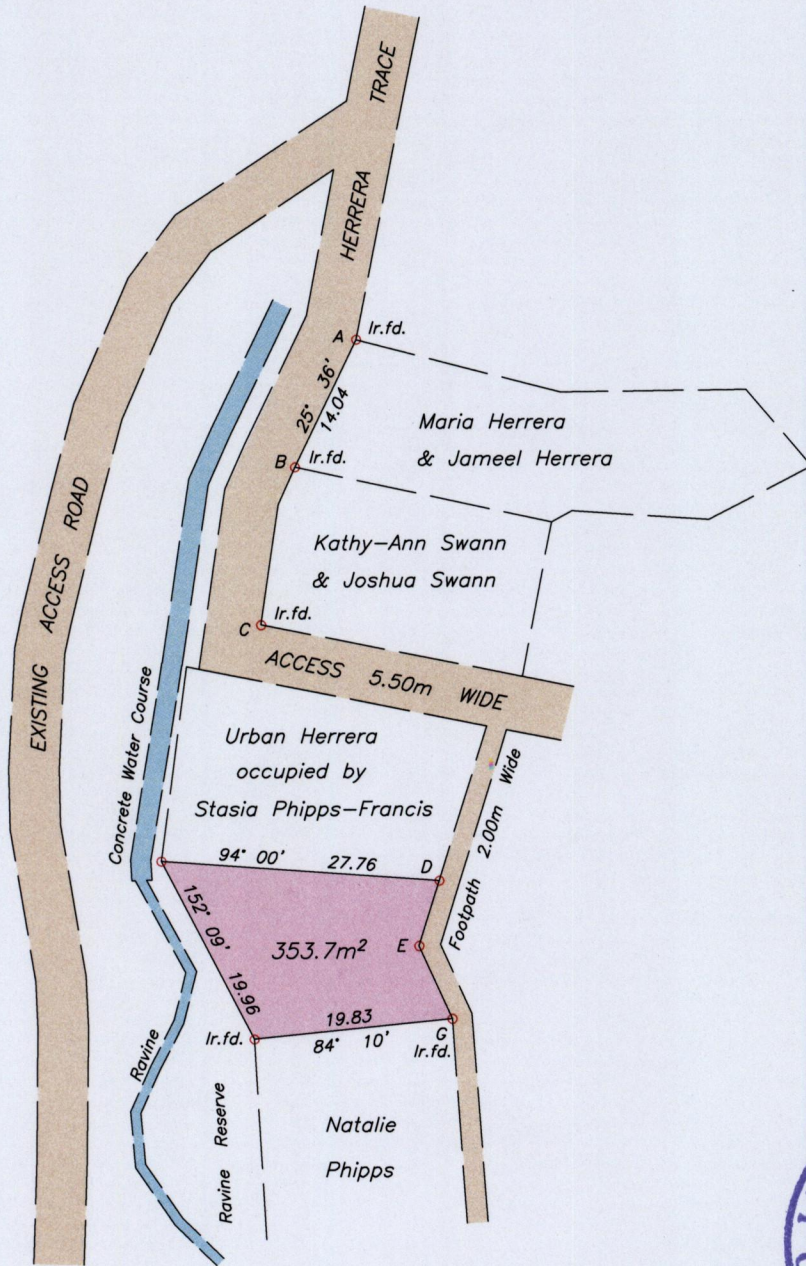
Cadastral Sheet A.15.J., 13A
4/c

Ward of Diego Martin

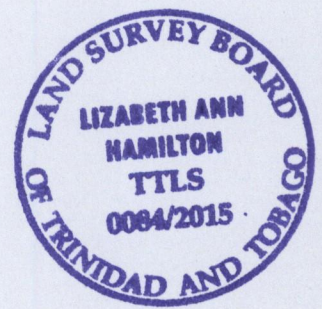
County of St. George

2016

Le Platte Village



LINE	BEARING	DISTANCE
BC	192° 02'	16.06
CG	153° 54'	43.63
ED	16° 59'	6.78
EG	155° 08'	7.94



D : 661148mE, 1184495mN

Co-ordinates are U.T.M. Zone 20 Naparima Datum +/-5m obtained from handheld G.P.S.

Bearings are U.T.M. Grid based on Solar Observations

PLAN of a Parcel of land coloured pink in the Ward of Diego Martin

Containing three hundred and fifty three point seven square metres

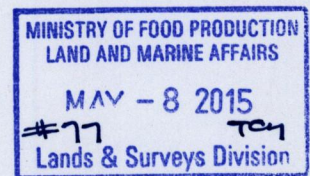
Surveyed by me, with due authority, in April 2015 for Natalie Phipps

Certified Correct in accordance with Regulation 25(1) of the Land Surveyors Regulations 1998,

SCALE 1:750

o denotes Ir. put unless otherwise stated

Distances are in metres



Checked by

Elizabeth Ann Hamilton

Entered

Trinidad & Tobago Land Surveyor *May 07* 2015