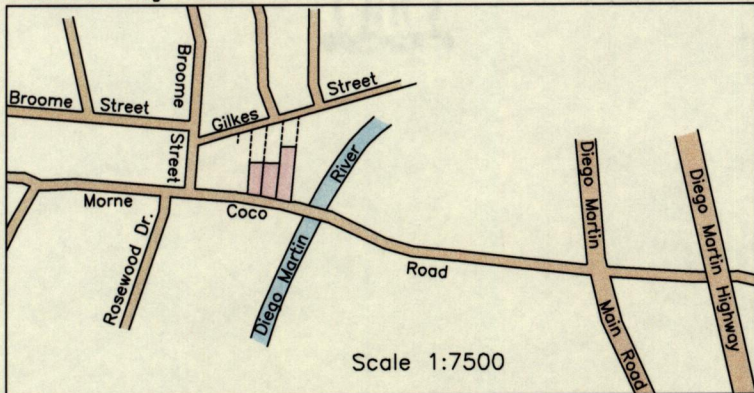
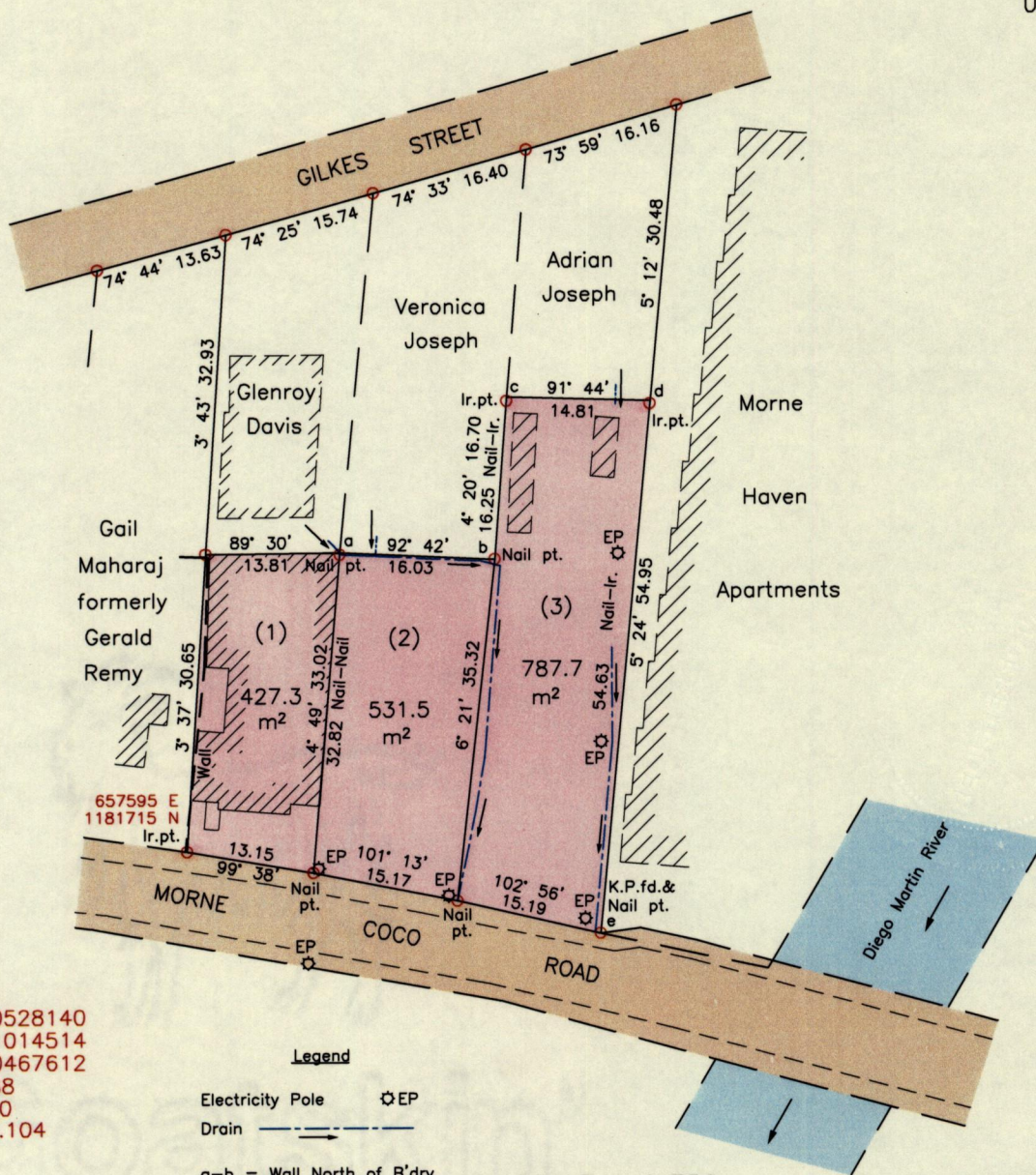
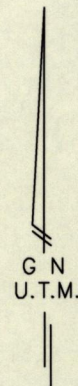


Process ID# 109143

Location Diagram



12F  
 Cadastral Sheet 2/d A.19.C.  
 Ward of Diego Martin  
 County of St. George  
Diego Martin

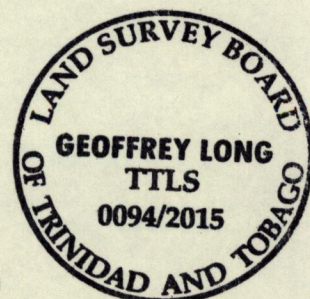


References:  
 DE# 201100528140  
 DE# 201001014514  
 DE# 200700467612  
 PLAN E.C.188  
 PLAN F.A.180  
 Bk.1369 Fol.104

**Legend**  
 Electricity Pole    ⚡ EP  
 Drain                ———>—  
 a-b = Wall North of B'dry  
 b-c = Wall West of B'dry  
 c-d = Wall South of B'dry  
 d-e = Wall East of B'dry

SCALE 1:750  
 Distances are in metres

Notes: ○ Denotes Ir.f.d. unless otherwise stated  
 Bearings are U.T.M. Grid based on Solar Observations  
 Coordinates obtained using handheld GPS (UTM Zone 20, Naparima ± 5.0m)



PLAN of 3 parcels of land coloured pink in the Ward of Diego Martin  
 Containing together one thousand seven hundred and forty six point five square metres  
 Surveyed by me, with due authority, in March 2015 for Arthur De Freitas  
 Certified Correct in accordance with Regulation 25(1) of the Land Surveyors Regulations 1998.

Checked by ..... Geoffrey Long .....  
 Entered on ..... Trinidad and Tobago Land Surveyor, 22nd April .....

