

1639

1836

AMENDED PLAN

13A

Cadastral Sheet 4/d (A.15.G.&K.)

Ward of Diego Martin

County of St. George

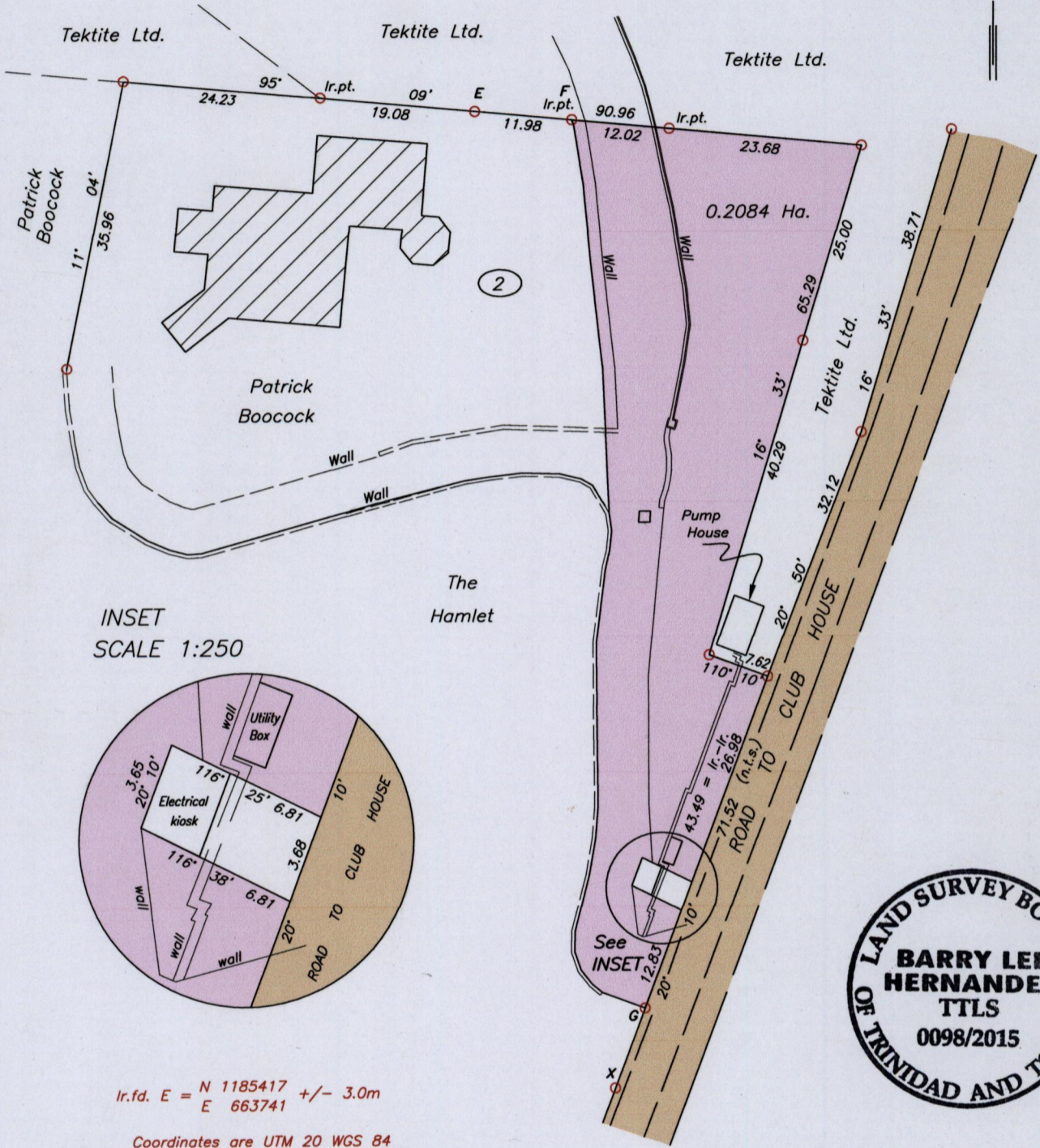
"THE SUMMIT"

MOKA, MARAVAL

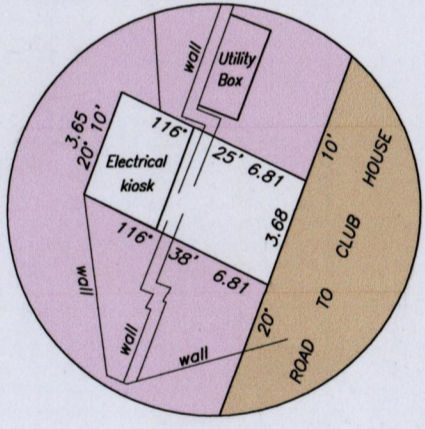
Process ID#109121

SEE BACK OF PLAN

G N
Cassini

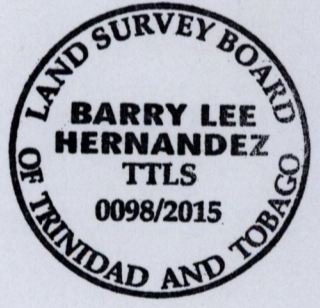


INSET
SCALE 1:250



Ir.f.d. E = N 1185417 +/- 3.0m
E 663741

Coordinates are UTM 20 WGS 84
Hand Held GPS



SCALE 1:750

Distances are in METRES

- Denotes Iron found unless otherwise stated
- Bearings are based on Solar observations

PLAN of a Parcel of land coloured pink in the Ward of Diego Martin
Containing zero point two zero eight four hectare

Surveyed by me, with due authority, in Nov. 2010 – May 2011 at the request of
Patrick Boocock for the creation of an easement.

Certified correct in accordance with Regulation 25 (1) of the
Land Surveyors' Regulations 1998,

Barry Lee Hernandez

T.T.L.S.

Entered on

Trinidad & Tobago 08th April 2015

Land Surveyor

