

1332

1427/11

988

REMAINING PORTION

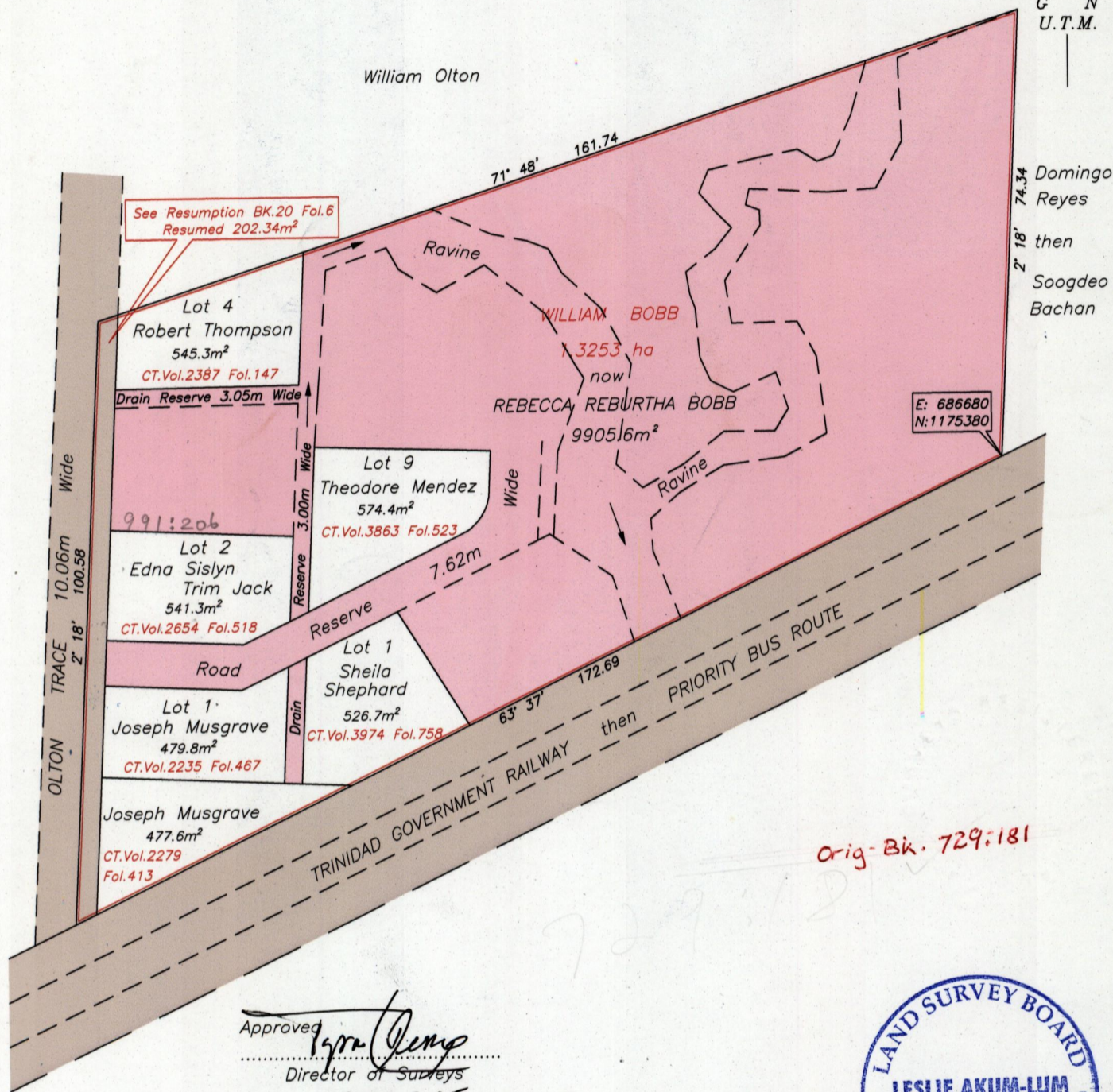
Cadastral Sheet B.24.D. 24C
1/c

R.P.O. Vol. 768 Fol. 67

Ward of Arima

Vol. 5118 Fol 495

County of St. George



Approved *[Signature]*
 Director of Surveys
 2008.8.25



Coordinates are UTM zone 20 Naparima Datum +/-5m scaled from L&S 1/10,000 sheet
 Bearings are Cassini grid based on Magnetic Needle
 Note: To obtain compass bearings add 27 minutes.

See Bks. 729 Fol. 181
 1386 Fol. 42

SCALE 1/1000

Distances are in metres

This is a true copy of a diagram of one point three two five three hectares originally granted to William Bobb, showing a portion coloured Pink and containing nine nine zero five point six square metres being the remainder after 6 previous transfers of other portions of the land and 1 resumption

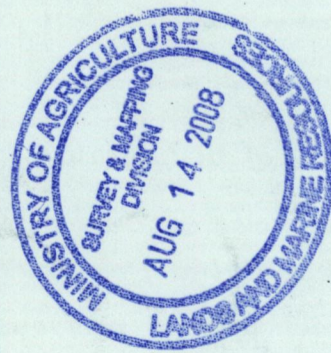
In accordance with Regulation 25 (1) of the Land Surveyors' Regulations 1998, I certify that this plan is correct.

Checked by *[Signature]*

[Signature]

Entered..... Trinidad & Tobago Land Surveyor *[Signature]* 7th Jan 2008

Original Bl in 1386! f2
Original Plan in BK 729:181



1332/98
1427/H