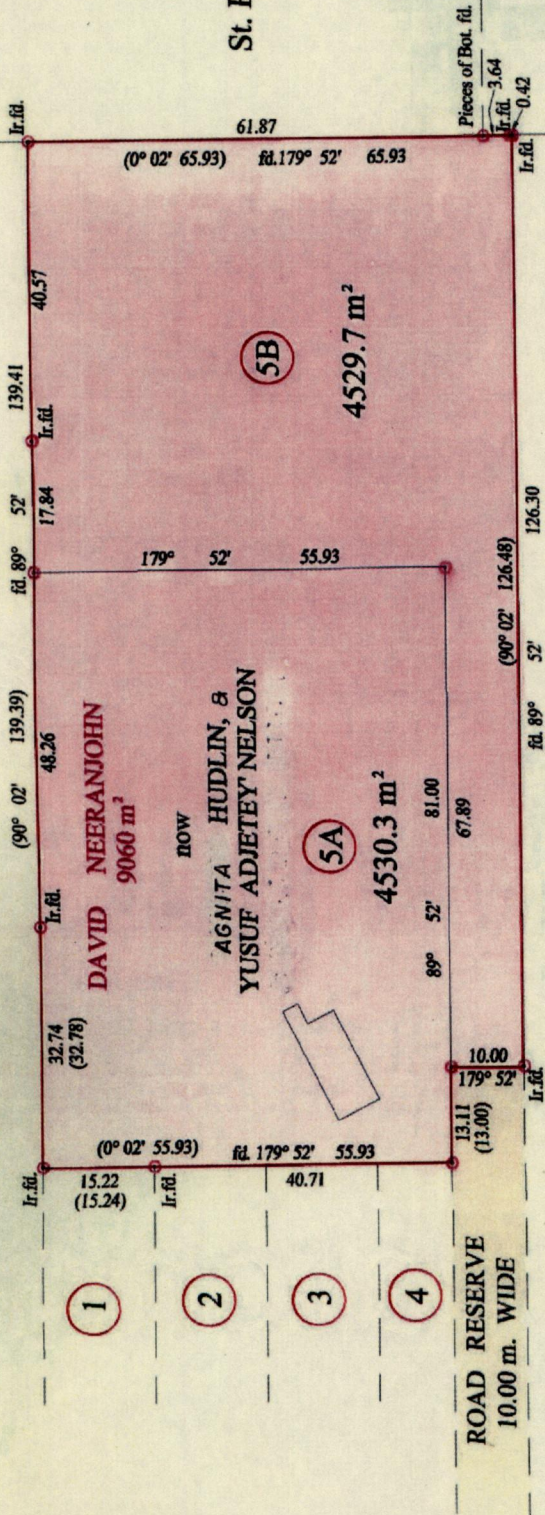


Ward of Siparia
County of St. Patrick
Cadastral Sheet (G.18.J) 73.C.
3/c&d

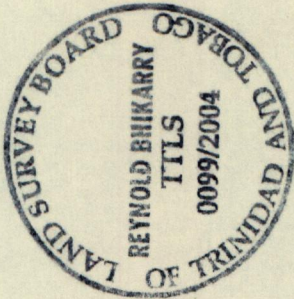
Jankee

R.P.O. Vol. 205 Fol. 119
C.T. Vol. 3404 Fol. 159
Vol. 5093 Fol. 357



Neeranjohn & Lutchminiah

St. R. Gray



Vide Bk. 1249 fol. 48

Orig - Bk. 1189: 135
See 415: 165

SCALE : 1:1000

Note: Bearings are cassini grid based on solar observations
Distances are in metres
PLAN of 2 Parcels of land coloured pink in the Ward of Siparia
Containing together nine thousand and sixty point zero square metres
Surveyed by me, with due authority, in April 2004
In accordance with Regulation 25 (1) of the Land Surveyors' Regulations 1998,
I certify that this plan is correct.

Approved *[Signature]*
Director of Surveys
2005. 8. 24

Checked by *[Signature]*
15/10/05

Entered on Trinidad & Tobago Land Surveyor ... 12th Nov. ... 2004

Original cannot be found

