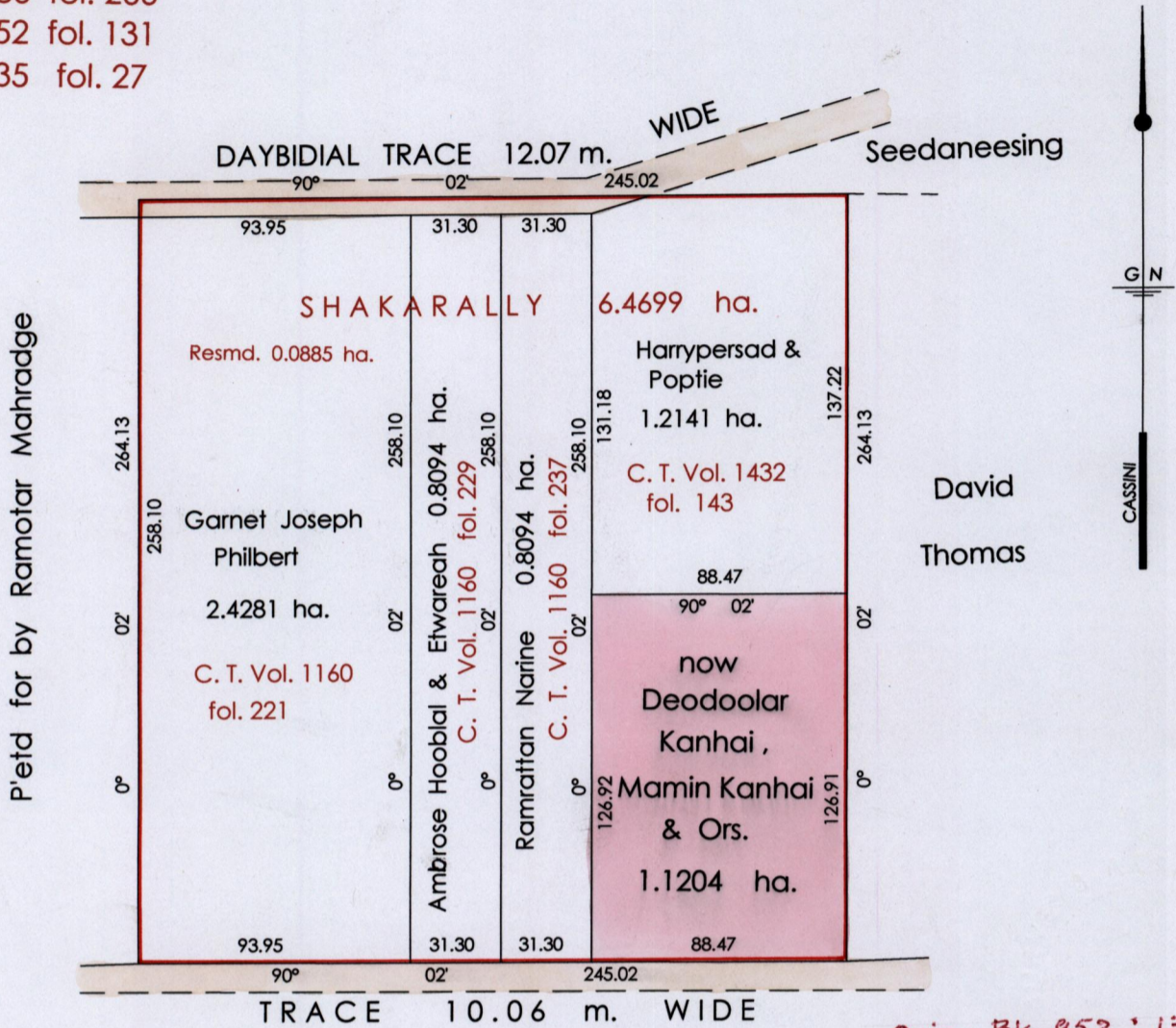


R.P.O. Vol. 103 fol. 599  
 C.T. Vol. 1160 fol. 213  
 Vol. 5109 Fol. 211  
 Bk. 393 fol. 309  
 Bk. 886 fol. 266  
 Bk. 952 fol. 131  
 Bk. 935 fol. 27

Ward of Siparia  
 County of St. Patrick  
 Cadastral Sheet ( G. 13. N. )  $\frac{73 C}{1/a}$



Orig - Bk. 952 : 131

Approved *[Signature]*  
 Director of Surveys  
 20070423



SCALE : 1 : 2500

Note: Bearings are cassini grid based on solar observations Distances are in metres  
 This is a true copy of a diagram of six point four six nine nine hectares ,originally transferred to SHAKARALLY showing a portion coloured pink and containing one point one two zero four hectares being the remainder after one resumption & four previous transfers of another portion of land. In accordance with Regulation 25 (1) of the Land Surveyors' Regulations 1998, I certify that this plan is correct.

Checked by *[Signature]*

Entered on ..... Trinidad & Tobago Land Surveyor *[Signature]* .....2007



Original Bl. 935; 27

MINISTRY OF AGRICULTURE  
LAND AND FORESTRY DIV.  
05 MAR 2007  
LANDS A/C

1386/89