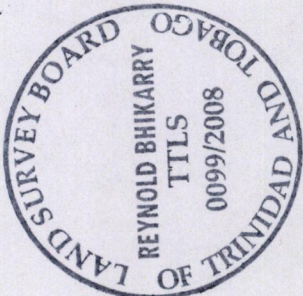
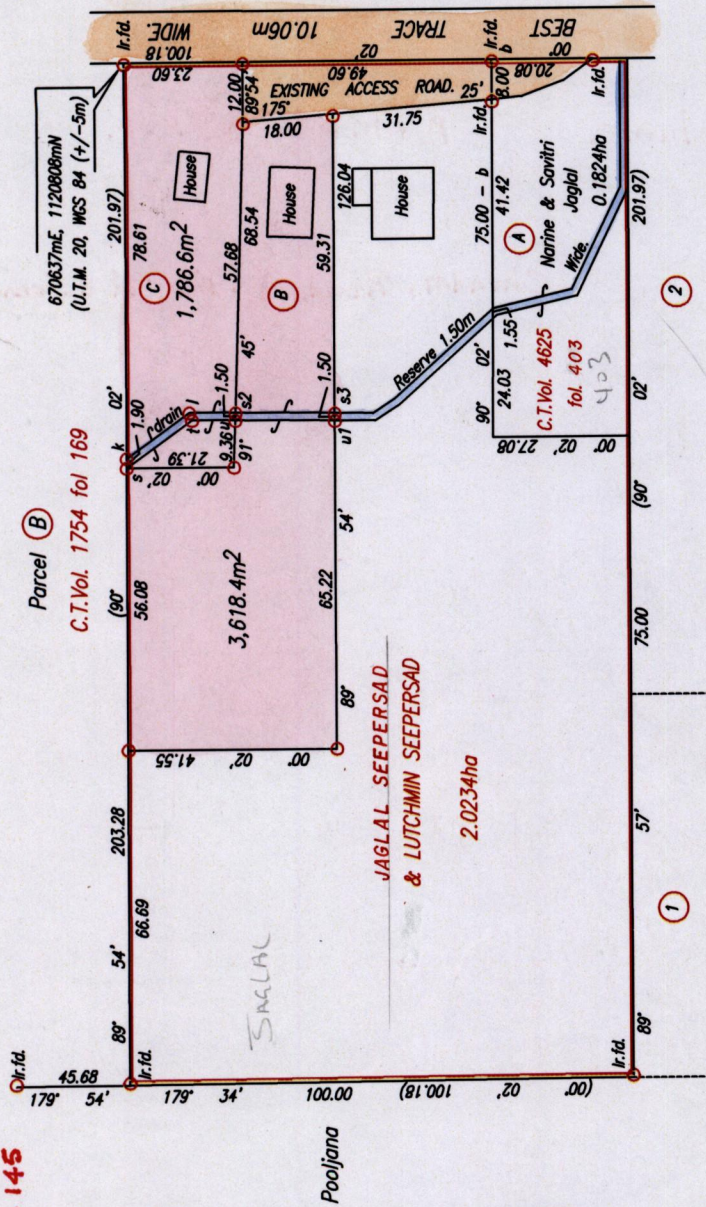


Cadastral Sheet G.18.B. 73C
1/d
Ward of Siparia
County of St.Patrick
Rock Road Penal

R.P.O. Vol. 124 Fol. 41
C.T. Vol. 2006 Fol. 253
Vol. 5099 Fol. 145
Vide Bk. 1005 fol 51
" " 1289 " 7



Approved *Yerra Deep*
Director of Surveys
2008-9-11

PLAN of 2 Parcels of land coloured pink in the Ward of Siparia
Containing together five thousand, four hundred and five point zero square metres.
Surveyed by me, with due authority, in March, 2006
In accordance with Regulation 25 (1) of the Land Surveyors' Regulations 1998,
I certify that this plan is correct.

Checked by *Mary 9/11/08*
.....
Ravindra Bihary
Trinidad & Tobago Land Surveyor. 14th April 2008.

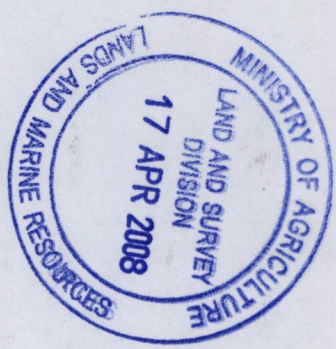
LEGEND		
s - t	144° 08'	16.11
t - u	180° 39'	8.62
k - l	144° 08'	75.44
l - s2	180° 39'	9.21
u - u1	180° 39'	19.86
s2 - s3	180° 39'	19.81

Orig. - Bk. 1005: 51
SCALE 1:1500
Distances are in metres

Coordinates obtained from hand held GPS.
o Denotes Iron put except where otherwise stated
Bearings are Cassini Grid based on Solar Observations

13270
01/281

Original Plan 396 to 157.



Lot No.	CT. & Volume	NAMES.
A		
B		Chandra, Ramdath & Narrad u. Jeenth
C.		