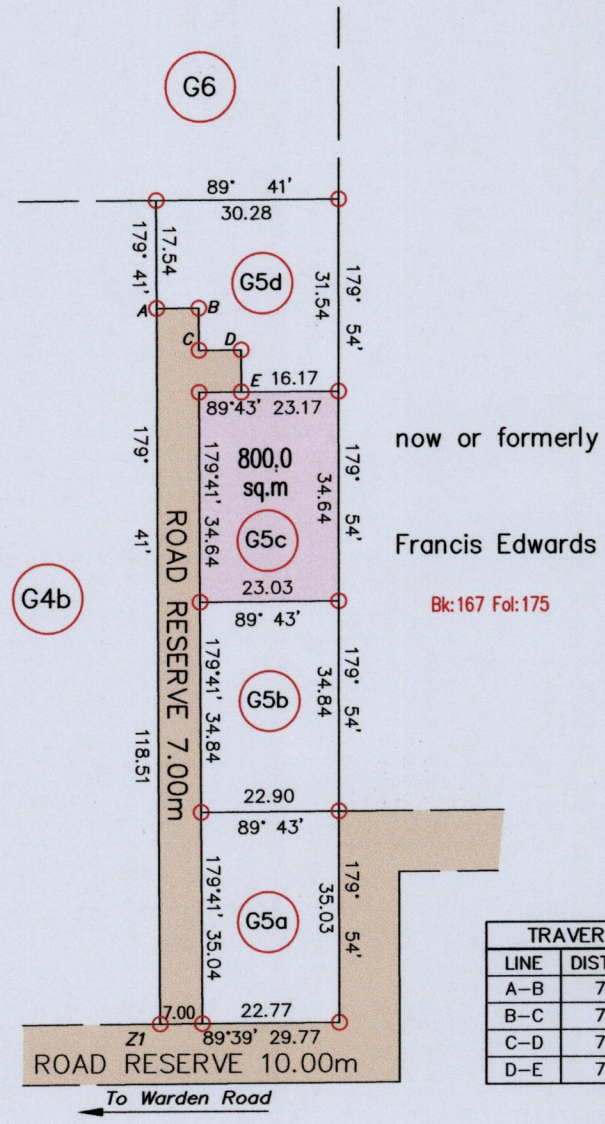


Process ID# 110774

1623

PROTOCOL OF DEEDS
 # DE 201201901359D001



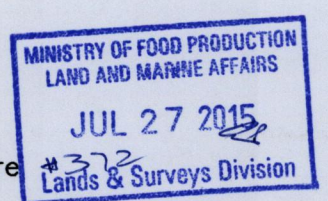
now or formerly
 Francis Edwards
 Bk:167 Fol:175

TRAVERSE NOTES		
LINE	DISTANCE	BEARING
A-B	7.00	89°43'
B-C	7.00	179°41'
C-D	7.00	89°43'
D-E	7.00	179°41'



GPS WGS 84 (Zone 20) reading at Iron found Z1
 N 1165891 E 709008 Accuracy (+/-2.0m)
 ○ Denotes Peg put unless otherwise stated
 ○ Denotes Iron found unless otherwise stated

SCALE: 1/1250



Note: Bearings are based on solar observations Distances are in Metres.

PLAN of a parcel of land coloured pink in the Ward of Turure
 Containing eight hundred point zero square metres (8,611.4 sq.ft)

Surveyed by me, with due authority, in June 2015 at the request of Lorraine Paul-Arthur

Certified correct in accordance with Regulation 25 (1) of the Land Surveyors' Regulations 1998.

Checked by *John de Sormeaux*

Entered on Trinidad & Tobago Land Surveyor *16th July 2015*

file path GD: \Fernando Joseph (G5 gen.plan) lot 65c .dwg