

Process JD# 110756

1623

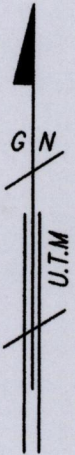
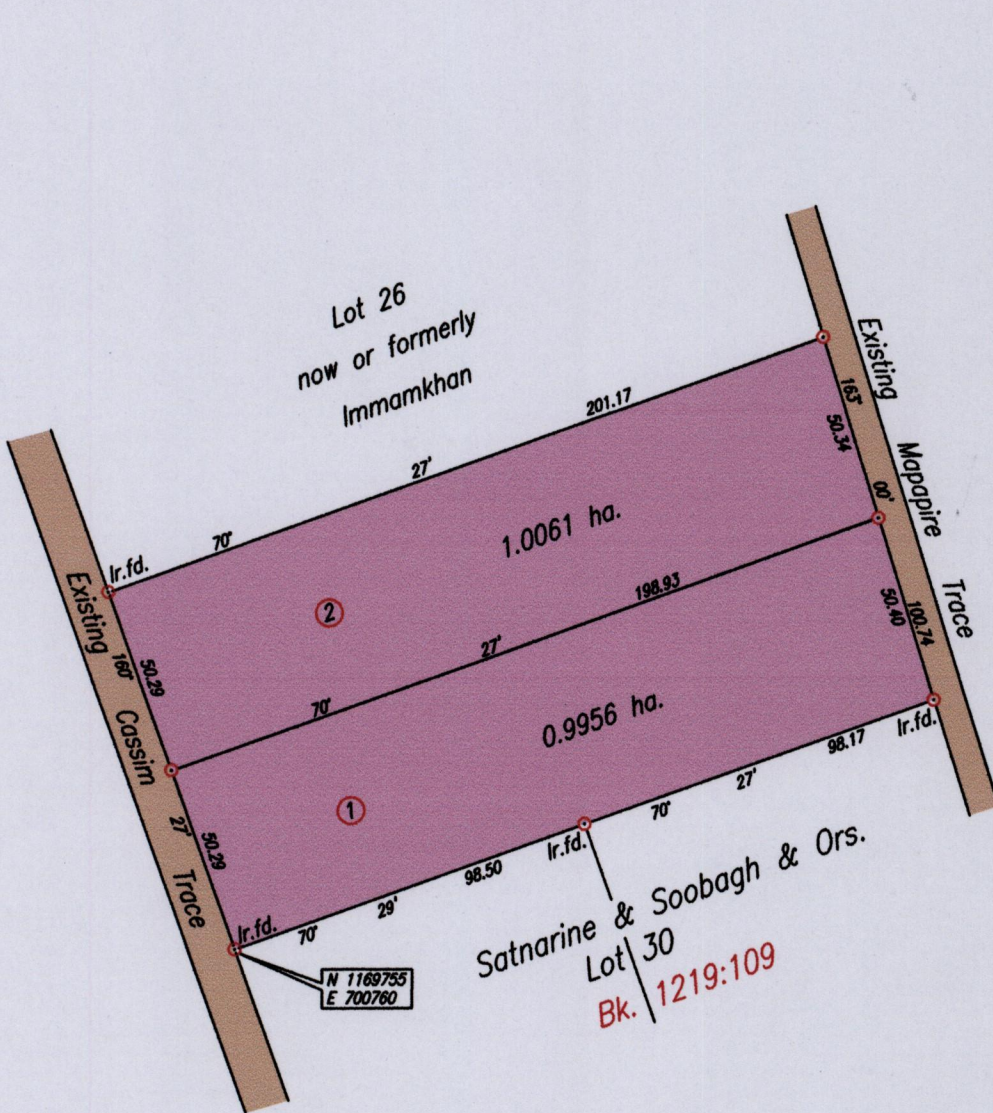
Cadastral Sheet E.1.G.&H.  $\frac{25E}{27c}$

Ward of Turure

County of St. Andrew

2014

See Bk. 1219 fol. 109  
Bk. 202 fol. 296



SCALE 1:2000

Distances are in metres

○ Denotes Iron put except otherwise stated.

See Bk 1623: 42

See Bk 1623/42

Coordinates obtained by hand held G.P.S. (Naparima 20) +/- 5.0m.

Bearings are based on Solar Observations

Plan of 2 Parcels of land coloured pink in the Ward of Turure.

Containing together two point zero zero one seven hectares.

Surveyed by me, with due authority, in June 2013 for Rakesh & Rouvee Ramoutar.

Certified correct in accordance with Regulation 25 (1)

of the Land Surveyors' Regulations 1998.

..... *Hugo Somarsingh* .....

Trinidad & Tobago Land Surveyor. *9th July* .. 2015.

Entered

