

1623

2013

U.P.R.N No.....

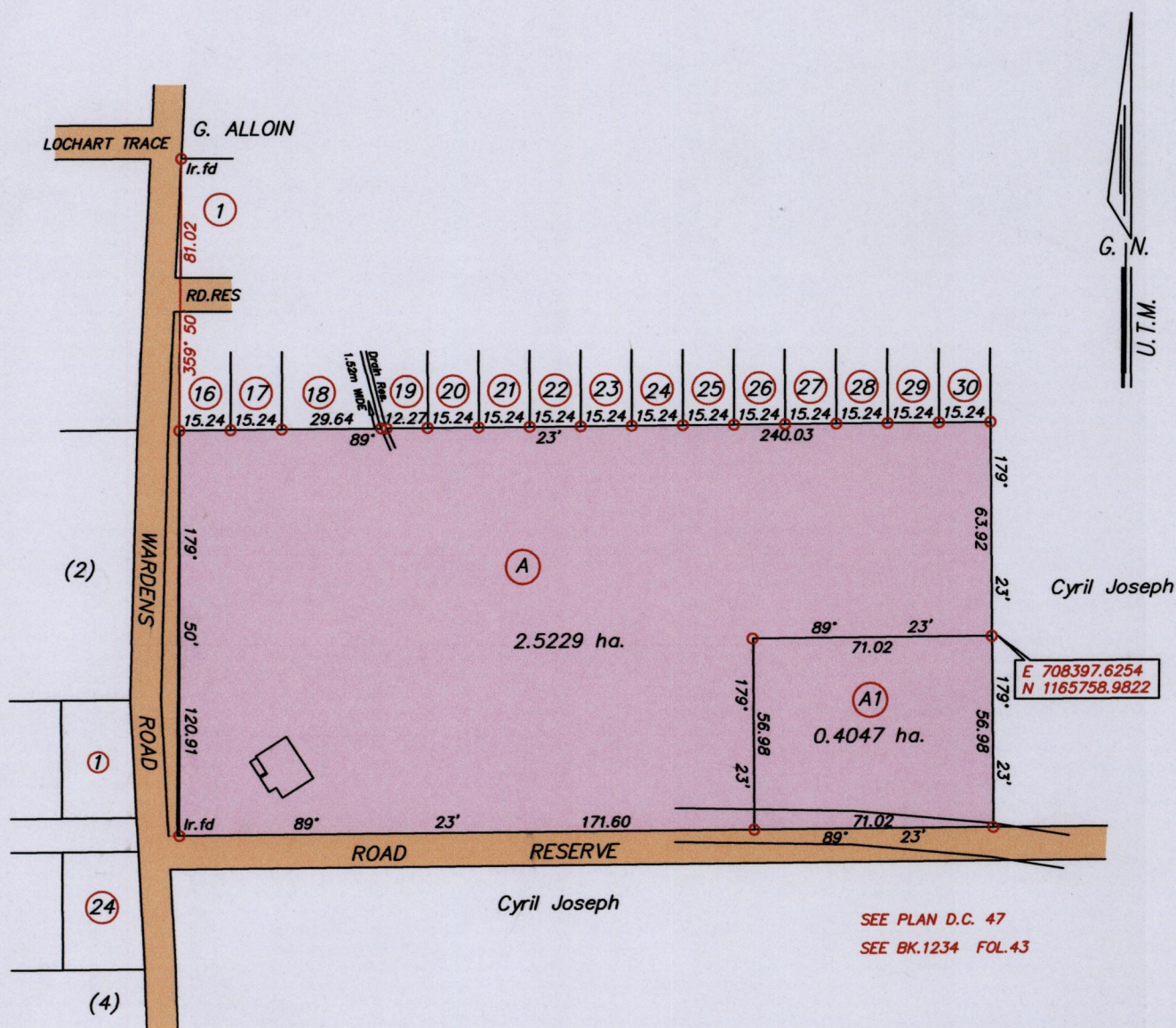
Cadastral Sheet E.2.K. 36A & 35C
1/a 2/b

SEE RD. # DE 200200629293

Ward ofn Tureure

Process Jd# 110750

County of St. Andrew



Co-ordinates obtained from hand held GPS

WGS84 U.T.M. Zone 20, +/- 2.00m

○ Denotes Iron put unless otherwise stated

Bearings are UTM Grid based on Solar Observations

Note : To obtain Cassini Grid bearings add 18 minutes

Plan of 2 Parcels of land coloured pink in the Ward of Tureure

Containing Together two point nine two seven six hectares

Surveyed by me, with due authority in June 2015 for Charles Nora

Certified Correct in accordance with Regulation 25 (1) of the Land Surveyors Regulations 1998

Entered

Hugo Somarsingh

Trinidad and Tobago Land Surveyor (TTLs)..... 17th July 2015

SCALE 1/2000

Distances are in metres

