

1623

199

25F

Cadastral Sheet 1/d E.2.A

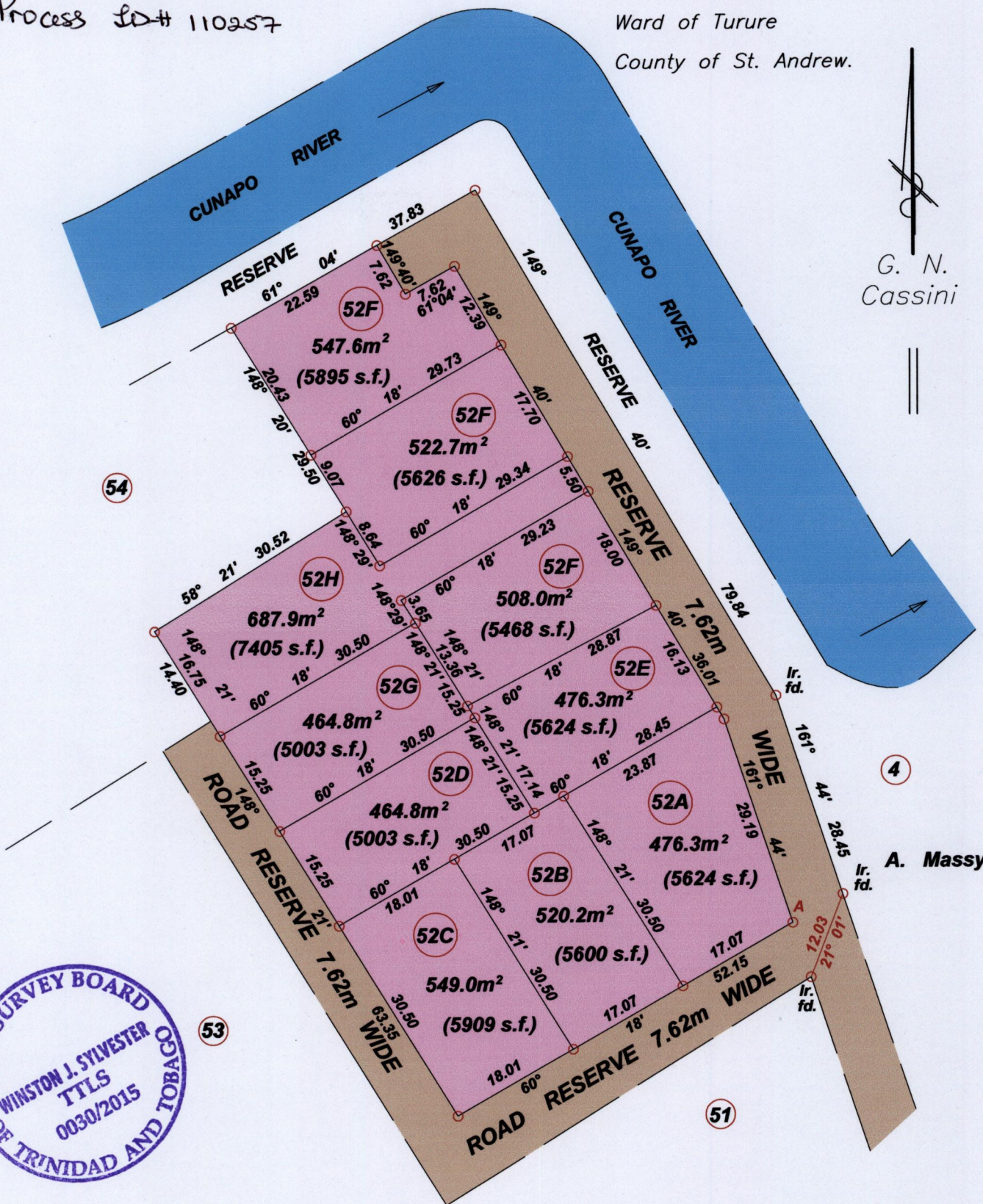
Ward of Turure

County of St. Andrew.

Process ID# 110257

G. N. Cassini

A. Massy



A= N.1170039  
E.0703936

Coordinates are obtained by hand held G.P.S.  
W.G.S. 84 Zone 20(±) 5m

- Denotes Iron put unless otherwise stated
- Bearings are Cassini Grid based on Solar observations

SCALE 1:750  
Distances are in METRES

PLAN of 10 Parcels of land coloured pink in the Ward of Turure.  
Containing together zero point five three seven one hectares.  
Surveyed by me, with due authority, in June, 2015 for S. Nandlal  
Certified correct in accordance with Regulation 25 (1) of the  
Land Surveyors' Regulations 1998,

Entered

*[Signature]* ..... T.T.L.S.

Trinidad & Tobago Land Surveyor ..... 30 - 6 - 2015

