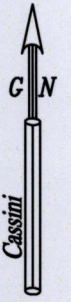


1623

197

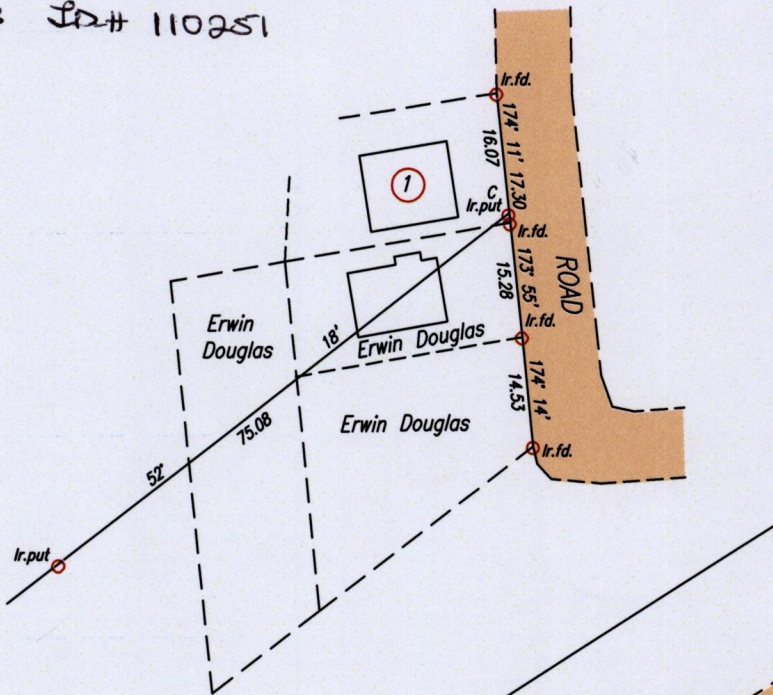
Ward of Turure
County of St. Andrew
Cadastral Sheet E.8.B. 36A
4/6

Manzanilla
See Plan M.A.43

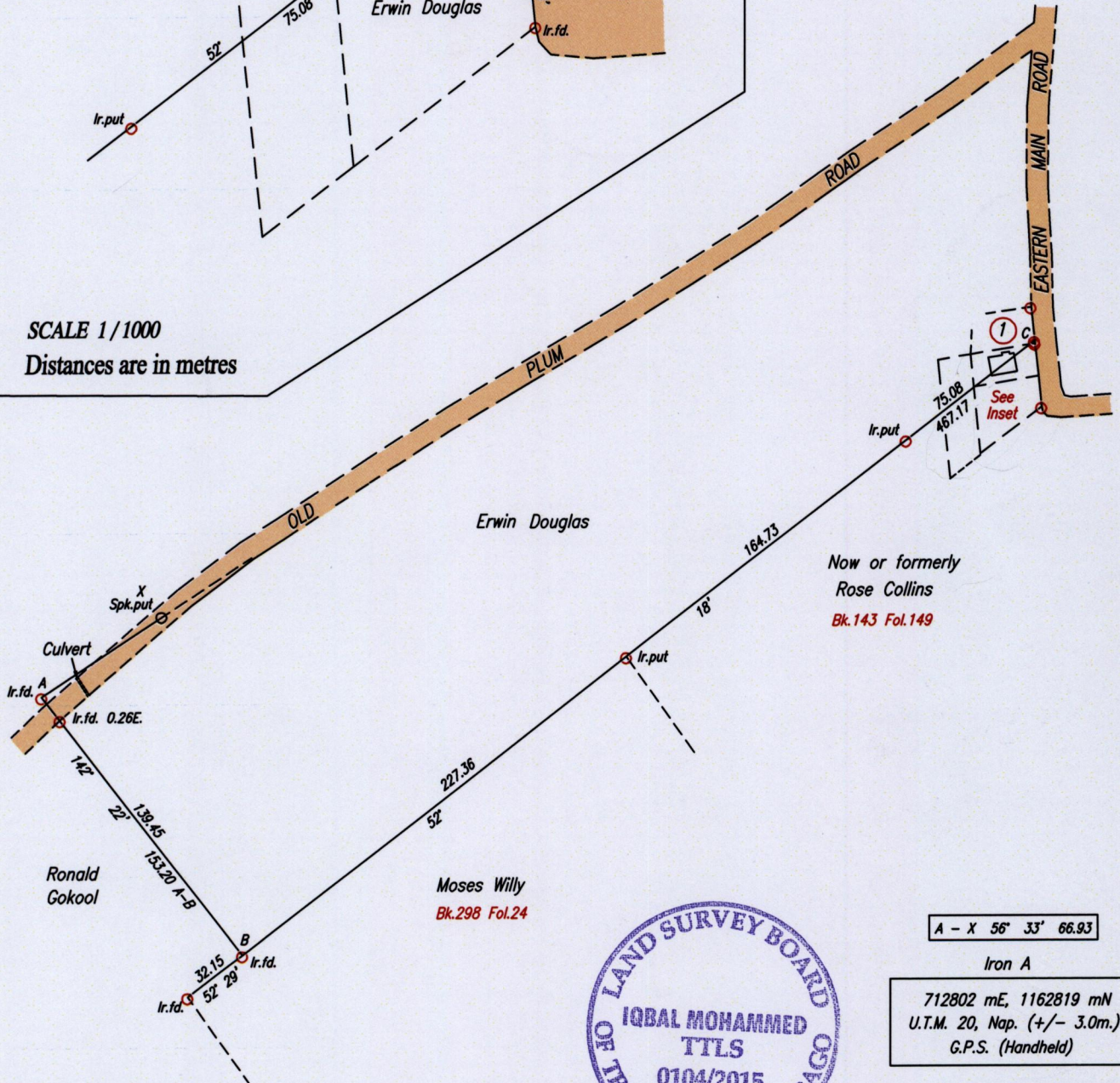


Process ID# 110251

INSET



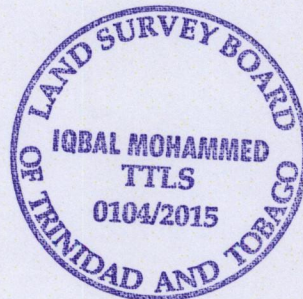
SCALE 1/1000
Distances are in metres



Now or formerly
Rose Collins
Bk.143 Fol.149

Moses Willy
Bk.298 Fol.24

Ronald Gokool



A - X 56° 33' 66.93

Iron A

712802 mE, 1162819 mN
U.T.M. 20, Nap. (+/- 3.0m.)
G.P.S. (Handheld)

SCALE 1/3000
Distances are in metres

Bearings are Cassini Grid based on Solar Observations

To obtain UTM bearings, subtract 18 minutes

PLAN showing Boundary Lines A-B & B-C in the Ward of Turure

Surveyed by me with due authority, in June 2015 for Erwin Douglas

Certified Correct in accordance with Regulation 25 (1) of The Land Surveyors' Regulations 1998,

Entered on

I + a m

Trinidad & Tobago Land Surveyor (T.T.L.S) 29/6/2015

