

1623

195

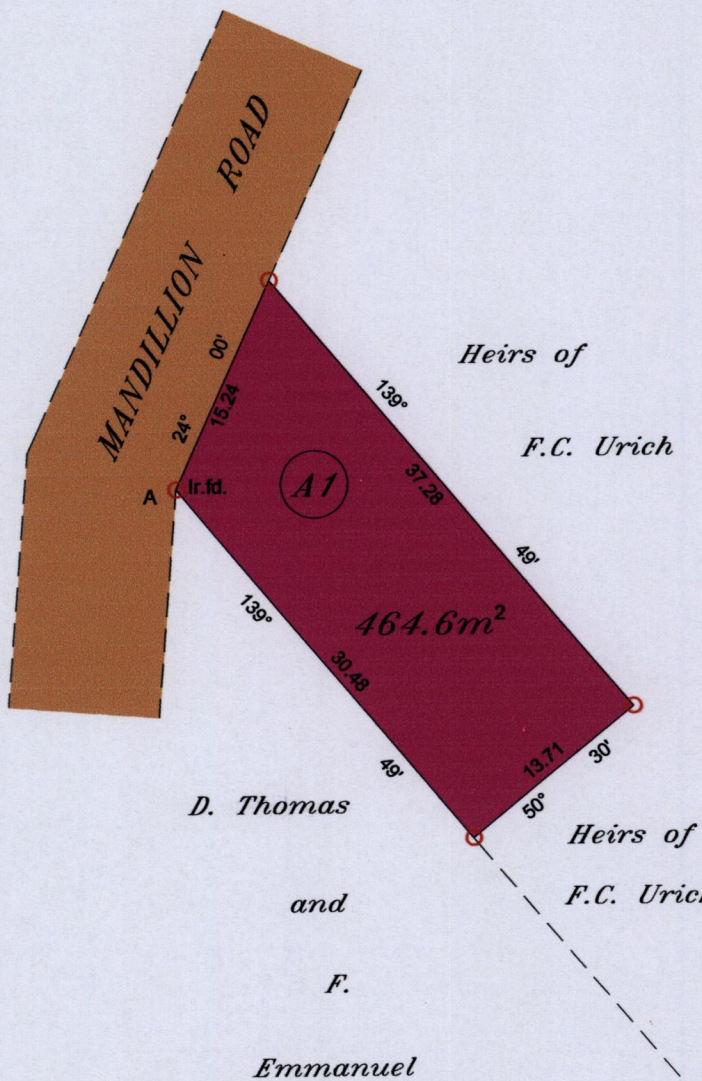
Cadastral Sheet E.2.F. ^{25F}/_{4/a}

Ward of Turure

County of St. Andrew.

Process ID# 110246

Vide Bk.158 fol.136



A= N - 1169094
E - 0705151

Note : Coordinates obtained by hand held G.P.S.
Naparima Zone 20 (+/-) 5m

○ Denotes iron put unless otherwise stated
Bearings based on solar observations .

SCALE: 1/500

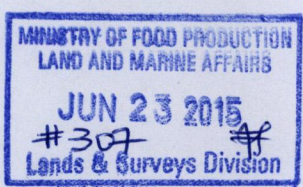
Note : To obtain compass bearing add minutes Distances are in metres.
PLAN of a parcel of land coloured pink in the Ward of Turure.

Containing four hundred and sixty four point six square metres.
Surveyed by me, with due authority, in June, 2015 for Heirs of F.C. Urich
Certified Correct in accordance with Regulation 25 (1) Land and Surveys Regulation 1998.

Checked by.....

Entered on

Trinidad & Tobago Land Surveyor..... 19. 6. 2015



368