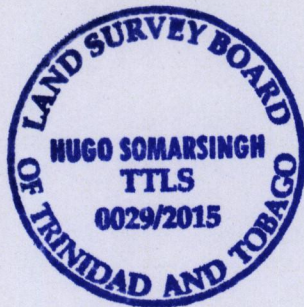


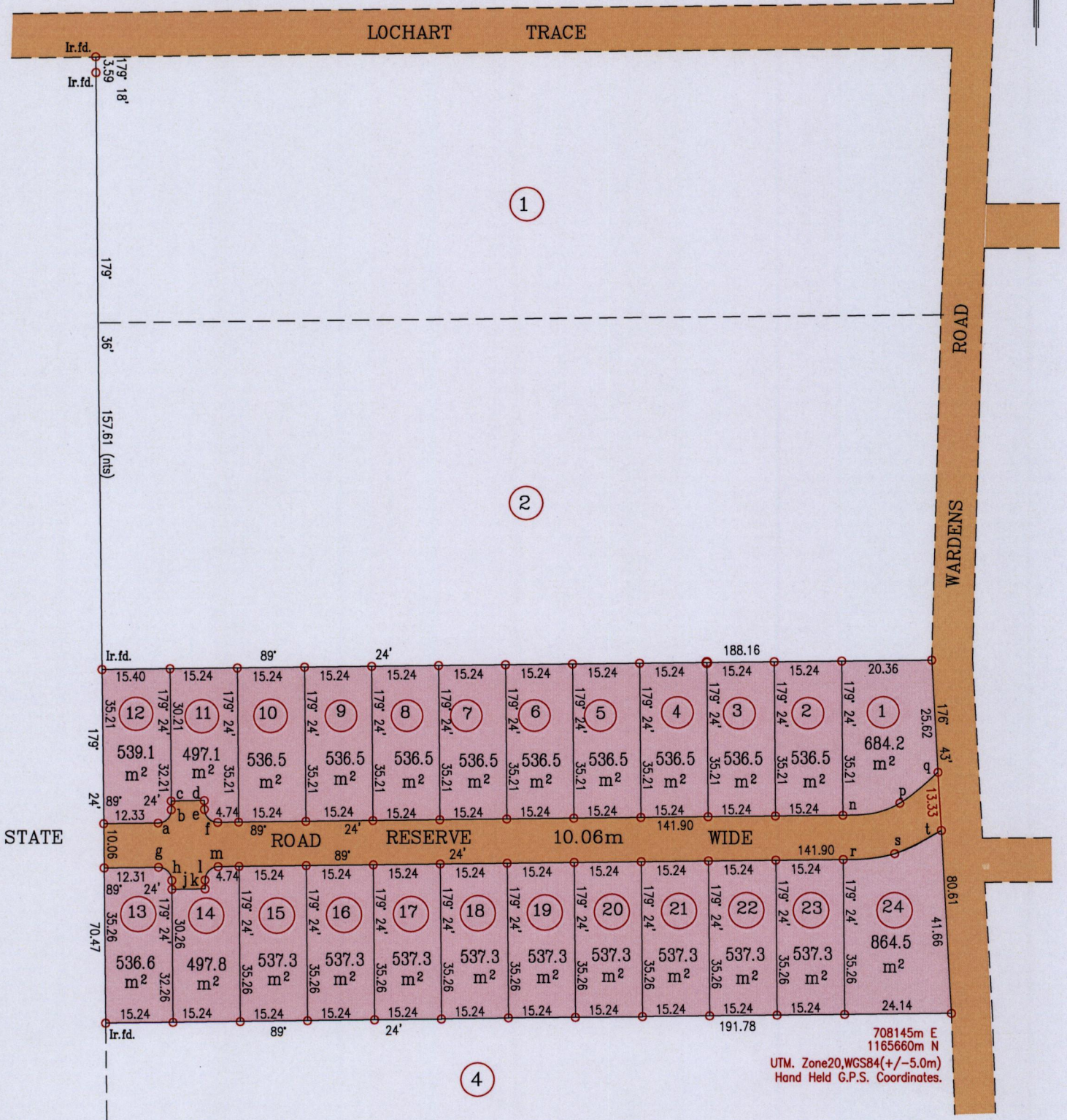
1023



194

U.T.M.
G. N.

Process ID# 110244



STATE

708145m E
1165660m N
UTM. Zone20,WGS84(+/-5.0m)
Hand Held G.P.S. Coordinates.

Sta.	Bear.	Dist	Rad.
a-b	44° 24'	4.24	3.0
b-c	359° 24'	2.00	
c-d	89° 24'	7.50	
d-e	179° 24'	2.00	
e-f	134° 24'	4.24	3.0

Sta.	Bear.	Dist	Rad.
g-h	134° 24'	4.24	3.0
h-j	179° 24'	2.00	
j-k	89° 24'	7.50	
k-l	359° 24'	2.00	
l-m	44° 24'	4.24	3.0

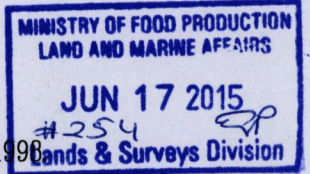
Sta.	Bear.	Dist
n-p	77° 51'	13.14
p-q	50° 35'	11.15
r-s	83° 27'	11.67
s-t	63° 26'	11.76

Vide Plan D.C. 47
Bk. 1234 Fol.43

SCALE 1/1250
Distances are in metres

○ Denotes Iron put unless where otherwise stated.
Bearings are U.T.M. Grid based on Solar Observations.
Plan of 24 Parcels of land coloured pink in the Ward of Turure
Containing together one point three two eight four hectares

Surveyed by me, with due authority in March 2015 for Anil Jawahir and Meera Jawahir
Certified Correct in accordance with Regulation 25(1) of the Land Surveyors Regulation 1990



Entered on.....

Trinidad and Tobago Land Surveyor(TTLS).....
Hugo Somarsingh
17th June 2015

3124