

1623

192

R.P.O. Vol. 165 Fol. 457

C.T. Vol. 1905 Fol. 395

See Bk. 188 Fol. 154

Plan K.I.12

Ward of Turure

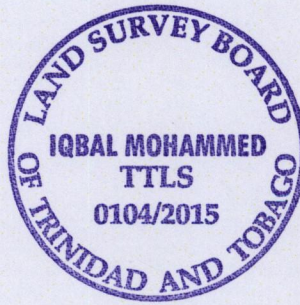
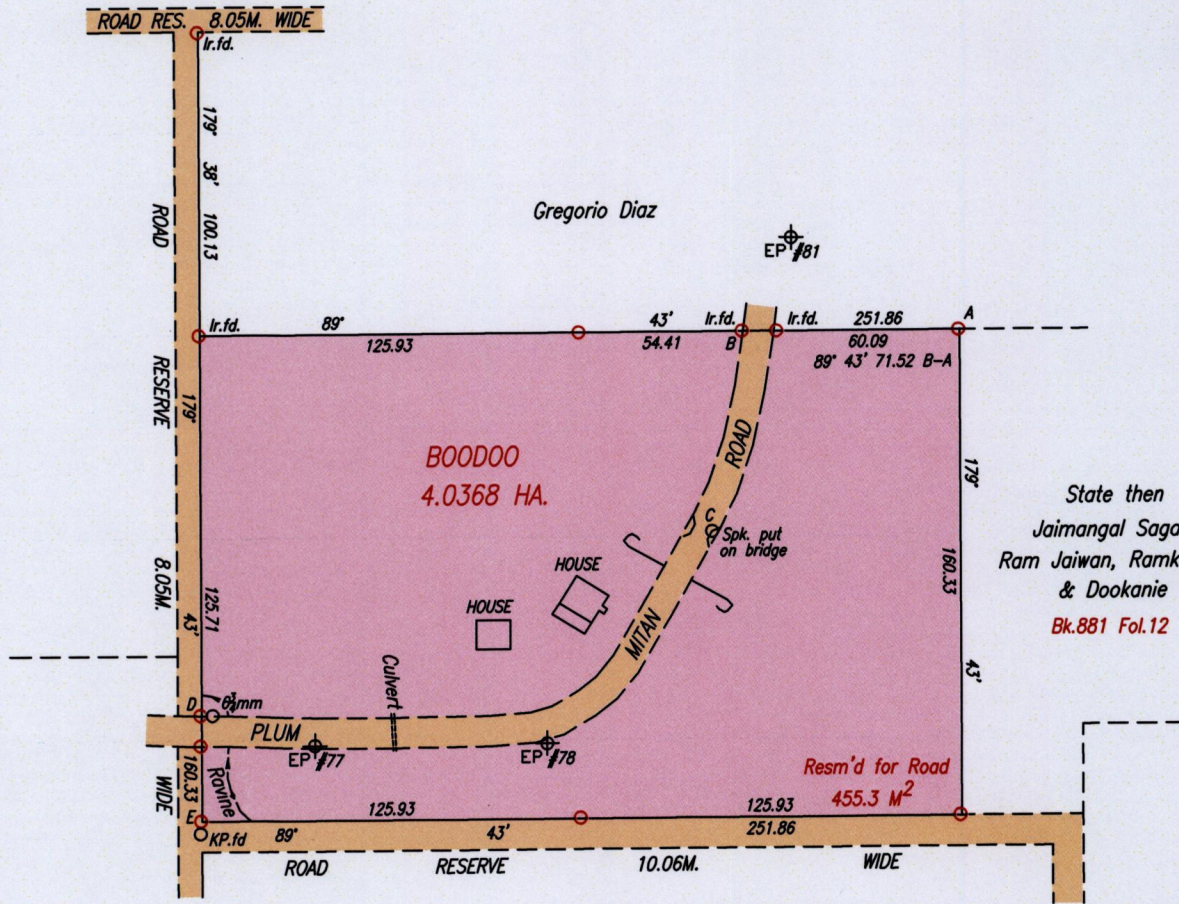
County of St. Andrew

Cadastral Sheet E.12.D. 36D
3/a

REDEFINITION PLAN

PLUM MITAN

Process ~~SD~~ # 110241



B - C	188° 50'	66.83
B - EP#81	27° 18'	34.69
D - MM	88° 24'	3.58
E - K.P.	187° 13'	4.07

SCALE 1/2500
Distances are in Metres.

Iron A

709041 mE, 1157191 mN
U.T.M. 20, Nap. (+/- 3.0m.)
G.P.S. (Handheld)

○ Denotes Iron put unless otherwise stated

Bearings are Cassini Grid based on solar Observations

To obtain UTM Bearings, subtract 18 minutes

PLAN of a Parcel of land coloured pink in the Ward of Turure

Containing four point zero three six eight hectares

Redefined by me, with due authority, on June 11th, 2015

Certified Correct in accordance with Regulation 25 (1) of The Land Surveyors' Regulations 1998,

Checked by

Entered on Trinidad & Tobago Land Surveyor (T.T.L.S.)

