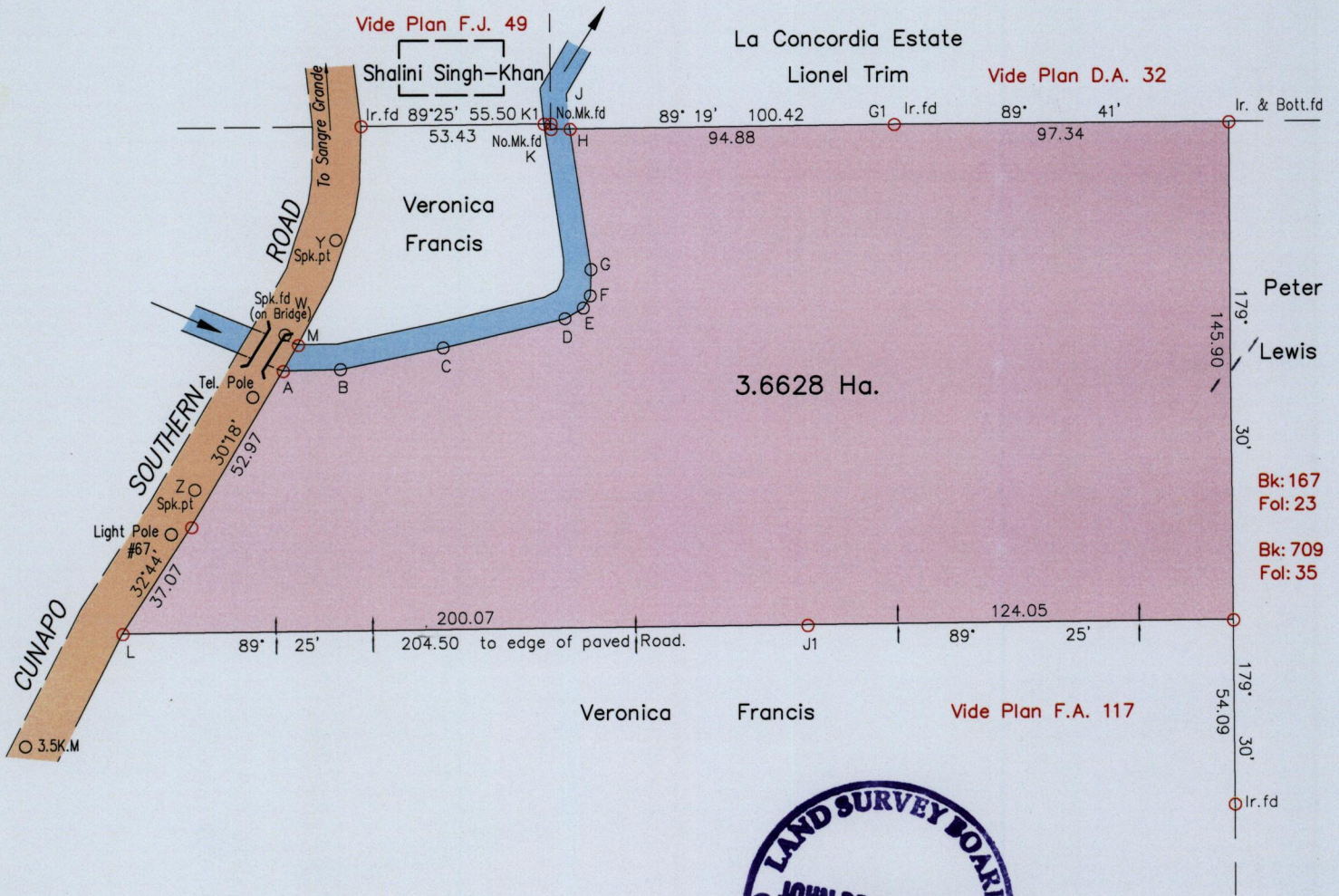
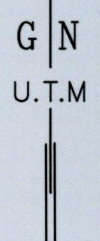


174

PROTOCOL OF DEEDS  
#2265 of 1974

Process ID#109541 **1623**

TRAVERSE NOTES			
From	To	Distance	Bearing
A	B	16.89	88°55'
B	C	30.59	78°15'
C	D	36.61	76°41'
D	E	6.19	60°08'
E	F	4.12	29°54'
F	G	7.63	01°29'
G	H	41.82	351°25'
J	K	1.61	179°25'
Z	W	52.49	30°02'
Z	L	46.98	206°48'
Z	3.5K.M	89.76	213°19'
Z	T.P	32.06	31°50'
Z	L.P	14.74	207°59'
A	M	8.77	30°10'
Z	Y	83.80	29°40'



GPS WGS 84 (Zone 20) reading at Spike put Z  
N 1167598 E 704725 Accuracy (+/-3.0m)

- Denotes Peg put unless otherwise stated
- Denotes Iron put unless otherwise stated

SCALE: 1/2000

Note: Bearings are based on solar observations Distances are in Metres.  
PLAN of a parcel of land coloured pink in the Ward of Turure  
Containing three point six six two eight hectares (9A. OR. 08.2P)  
Surveyed by me, with due authority, in April 2015 for at the request of Darryl Campbell & Eugene Alvarez  
Certified correct in accordance with Regulation 25 (1) of the Land Surveyors' Regulations 1998.

Checked by ..... *John de Sormeaux* .....

Entered on ..... 25<sup>th</sup> April 2015 ..... Trinidad & Tobago Land Surveyor

