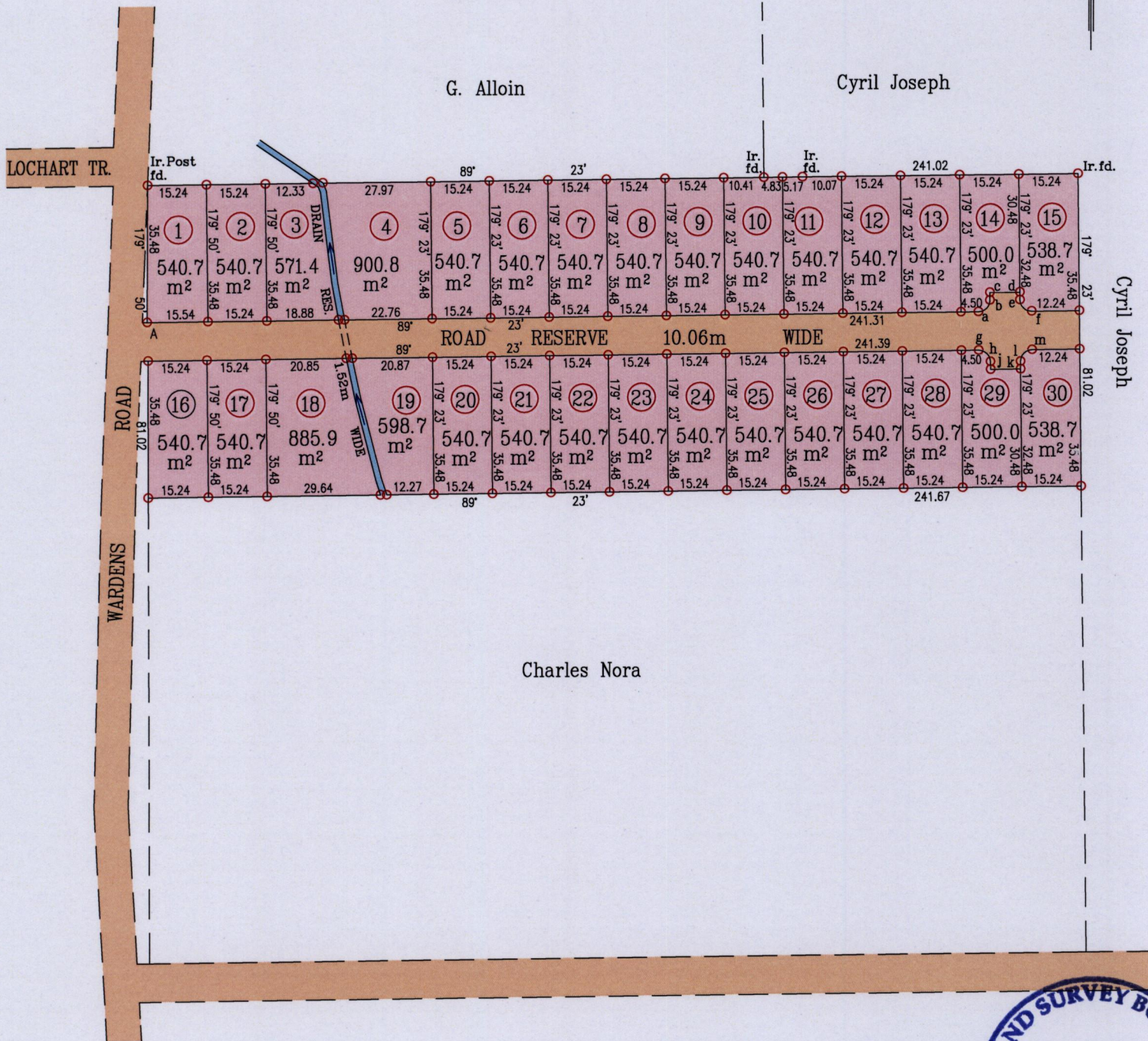


Process ID#109539

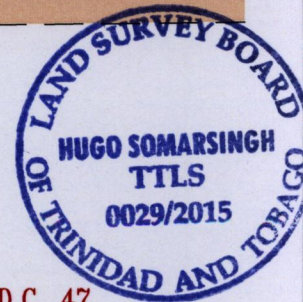
U.T.M.
G. N.



Sta.	Bear.	Dist	Rad.
a-b	44° 23'	4.24	3.0
b-c	359° 23'	2.00	
c-d	89° 23'	7.74	
d-e	179° 23'	2.00	
e-f	134° 23'	4.24	3.0

Sta.	Bear.	Dist	Rad.
g-h	134° 23'	4.24	3.0
h-j	179° 23'	2.00	
j-k	89° 23'	7.74	
k-l	359° 23'	2.00	
l-m	44° 23'	4.24	3.0

*Ir.put (A) - 708155m E
- 1165867m N*
UTM. Zone20,WGS84(+/-5.0m)
Hand Held G.P.S. Coordinates.



Vide Plan D.C. 47
Bk. 1234 Fol.43

○ Denotes Iron put unless where otherwise stated.

Bearings are U.T.M. Grid based on Solar Observations.

Plan of thirty Parcels of land coloured pink in the Ward of Turure

Containing together one point six nine three zero hectares

Surveyed by me,with due authority in March 2015 for Charles Nora

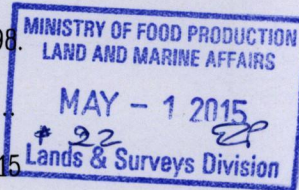
Certified Correct in accordance with Regulation 25(1) of the Land Surveyors Regulation, 1998.

Entered on.....

Trinidad and Tobago Land Surveyor(TTLS)..... *H. Somarsingh* 2015

SCALE 1/1500

Distances are in metres



4730