

1623

171

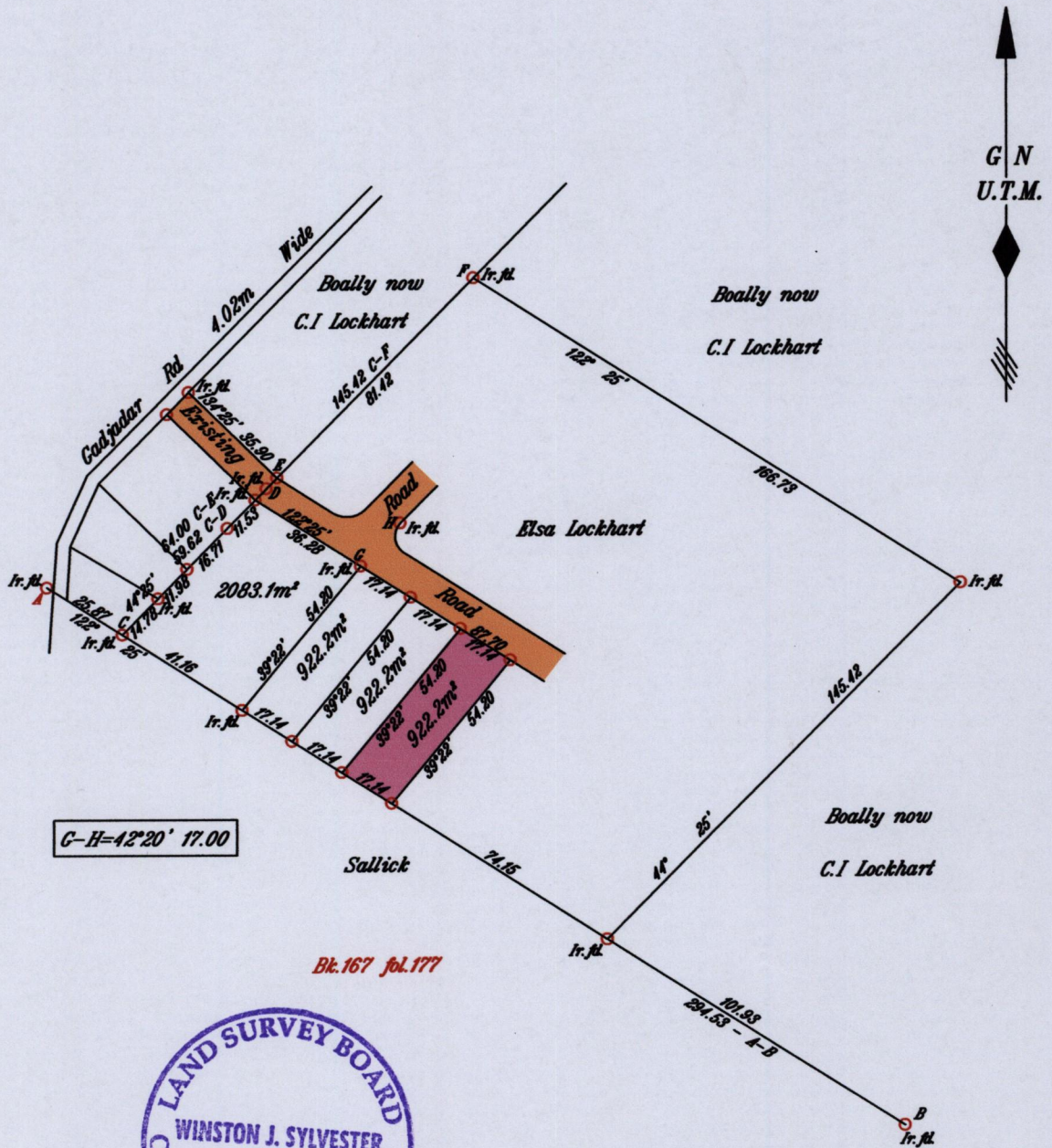
Cadastral Sheet E.2.G ^{25F}/_{4/d/1}

Ward of Turure

County of St. Andrew

Sande Grande

Process Id# 109534



Coordinates of A : 707215mE 1167924mN
 U.T.M. Naparima (-+5m)
 G.P.S. Direct Observation using handheld receiver

SCALE 1:2000

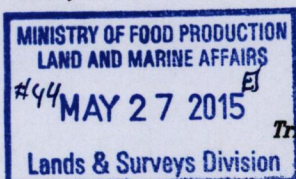
Distances are in METRES

- Denotes Iron put except where otherwise stated
- Bearings are U.T.M Grid based on Solar Observations

PLAN of a Parcel of land coloured pink in the Ward of Turure
 Containing Nine Hundred and Twenty Two point Two square metres
 Surveyed by me, with due authority, in April 2015 for Elsa Lockhart

Certified Correct in accordance with Regulation 25 (1) of The Land Surveyors Regulations 1998,

Entered:



[Signature]TTLS

Trinidad & Tobago Land Surveyor ... 26.5.15 ... 2015