

1623

1683

Cadastral Sheet C.18.E.

16D
3/b

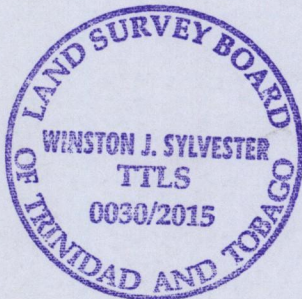
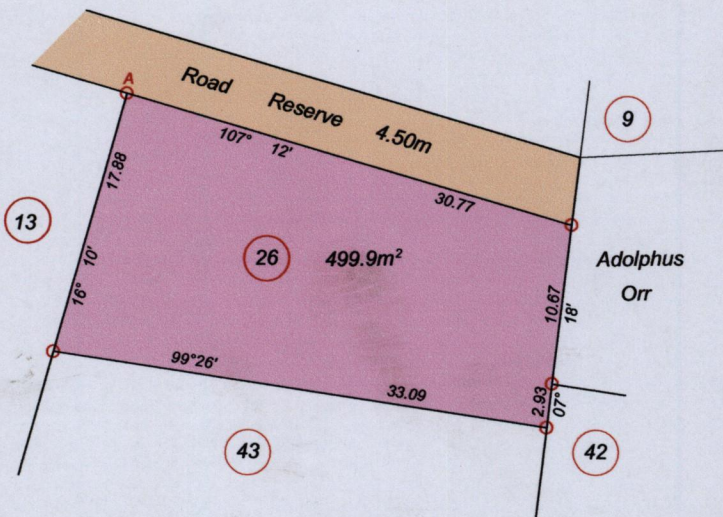
Ward of Matura.

County of St. Andrew.

Process ID#109530

Matura

G N
U.T.M



Ref: BK 1002 Fol 164

Note : Coordinates obtained by hand held G.P.S.

Naparima UTM Zone 20 (+/-) 5m A=1180022 711008

Denotes iron put unless otherwise stated

SCALE: 1/500

Bearings based on solar observations .

Note : To obtain compass bearing add minutes Distances are in metres.

PLAN of a parcels of land coloured pink in the Ward of Matura.

Containing Four Hundred and Ninety Nine point Nine square metres

Surveyed by me, with due authority, in April 2015 for Godson O'Neil

Certified Correct in accordance with Regulation 25(1) of Land and Surveys Regulation 1998

Entered:

[Handwritten Signature]

Trinidad & Tobago Land Surveyor 26-5-2015

