

1623

161

Process ID# 109116

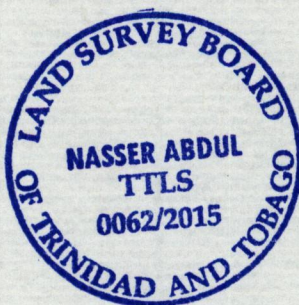
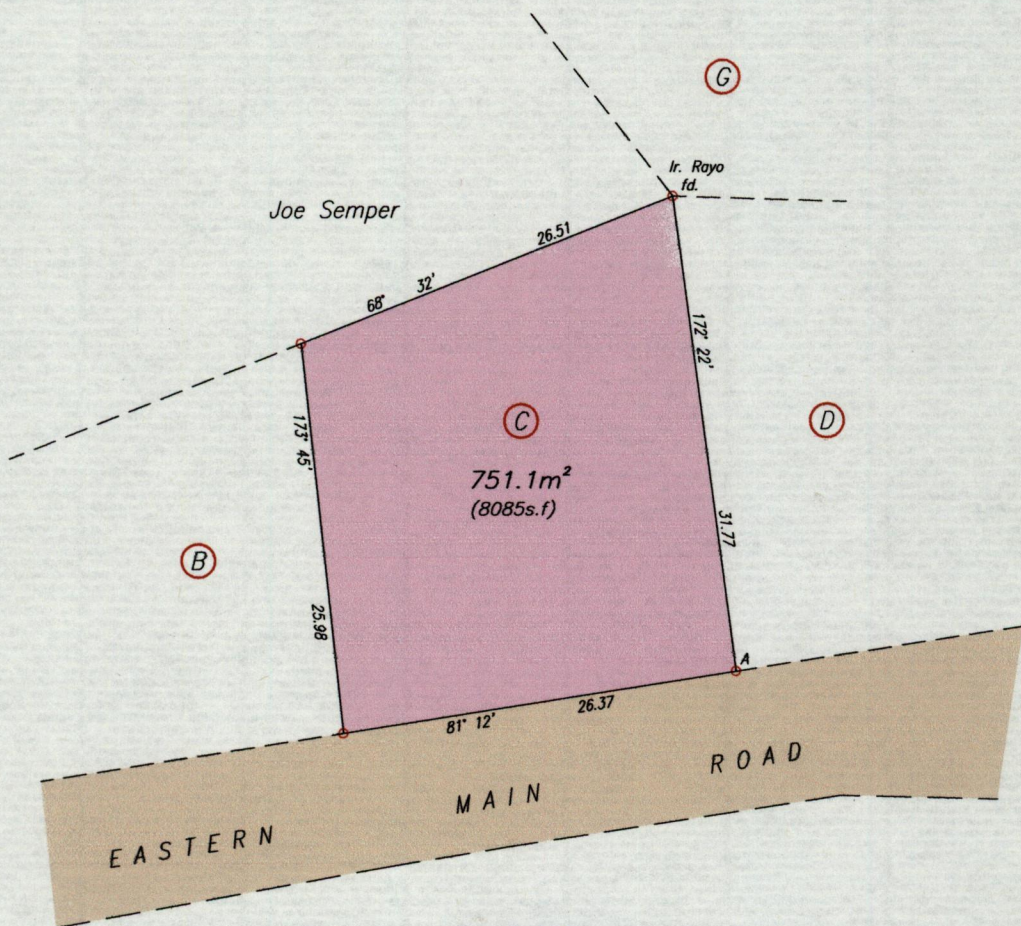
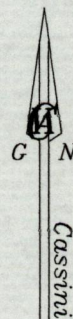
Cadastral Sheet E.8.B & C $\frac{36A}{4/b}$

Ward of Turure

County of St. Andrew

First & Last Bar

Manzanilla



SCALE 1/500

Distances are in metres

A N. 1163 161 Hand Held GPS
E. 0713 566 WGS84 Zone20

○ Denotes Iron Put unless otherwise stated

Bearings are Cassini Grid based on Solar Observations

PLAN of a Parcel of land coloured pink in the Ward of Turure

Containing seven five one point one square metres

Surveyed by me, with due authority, in August 2007 for Aura Morris & Loy Henry

Certified Correct In accordance with Regulation 25 (1) of the Land Surveyors' Regulations 1998,

Nasser Abdul

Entered on

Trinidad & Tobago Land Surveyor

sant

2015

