

No 10425

R.P.O. Vol. 122

C.T. Vol.

Vol. 4987 Fol. 229

Fol. 415

Fol.

(B)

S. Bissram

(A)

S. Bissram

Ward of Tamana.

County of St. Andrew.

Cadastral Sheet E. I. N.

P. Charles

(B) S. Bissram

(C) 20,050.4 S.M.

(D) 24,293.6 S.M.

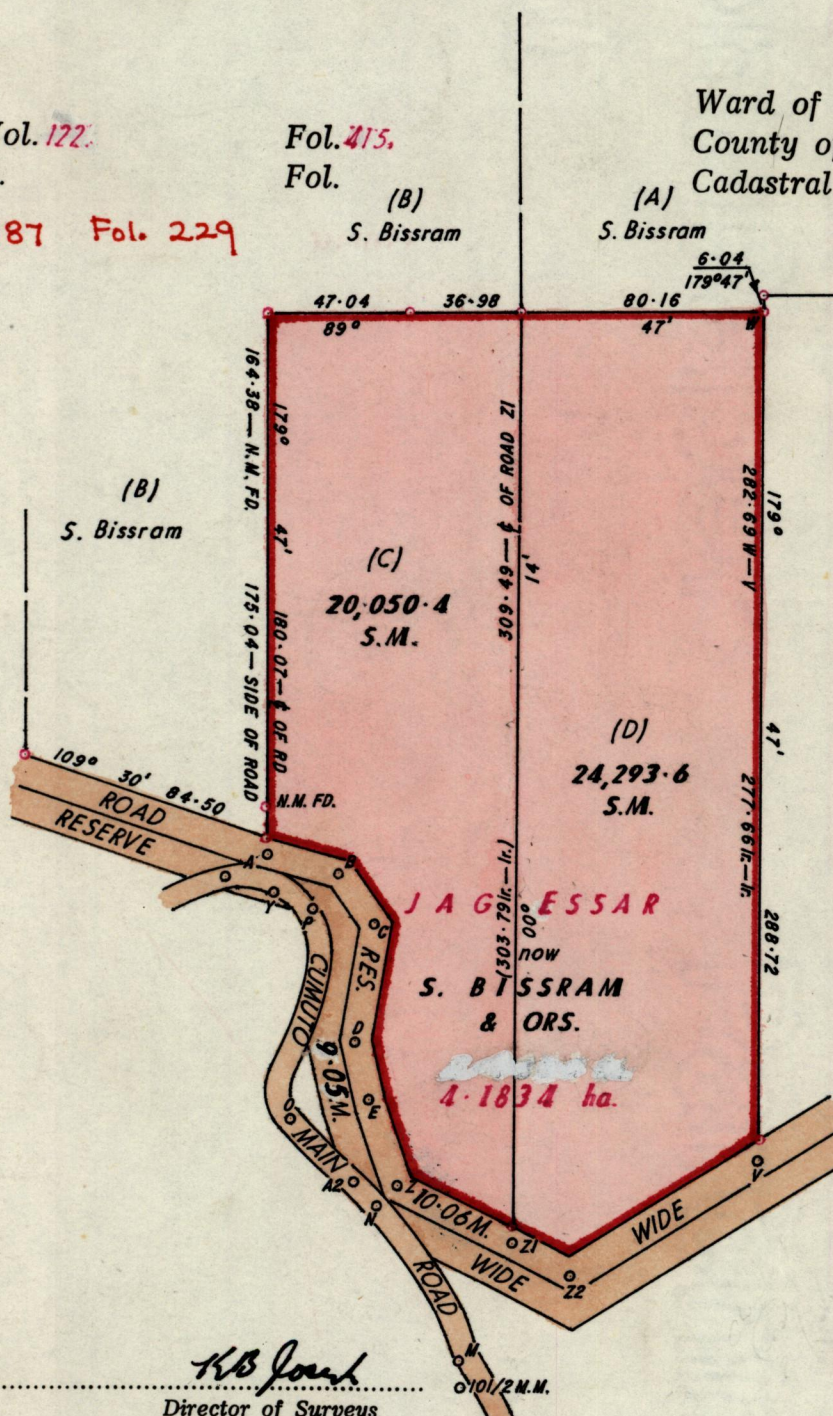
JAGRESSAR

S. BISSRAM & ORS.

1.1834 ha.

Rampersad

Cassini GIN



ROAD STATIONS

A — B	104° 45' 24.14
B — C	144° 35' 20.12
C — D	188° 45' 40.24
D — E	167° 20' 20.12
E — Z	159° 41' 29.78
Z — Z1	116° 30' 43.00
Z1 — Z2	118° 15' 22.13
Z2 — V	59° 11' 73.36
A2 — Z	90° 47' 14.65
M — N	332° 14' 58.59
N — A2	315° 14' 10.66
A2 — O	315° 14' 31.55
O — P	04° 47' 70.12
P — Y	289° 53' 13.78

Orig Bk 16:52

Approved

KB Joubert
Director of Surveys
8.5.5.23

SCALE 1:2500.

minutes

Distances are in metres.

o Denotes Iron put except otherwise stated.

Note: To obtain compass bearings add/subtract

PLAN of 2 Parcels of land coloured pink in the Ward of Tamana.

Containing four point four three four four hectares.

Surveyed by me, with due authority, in August 1981.

I certify that I have complied with rule 76 under section 14(2)(d) of the Land Surveyors' Ordinance 1952, and that this plan is correct.

Checked by *HS* 85/05/23

Winton Ramnara

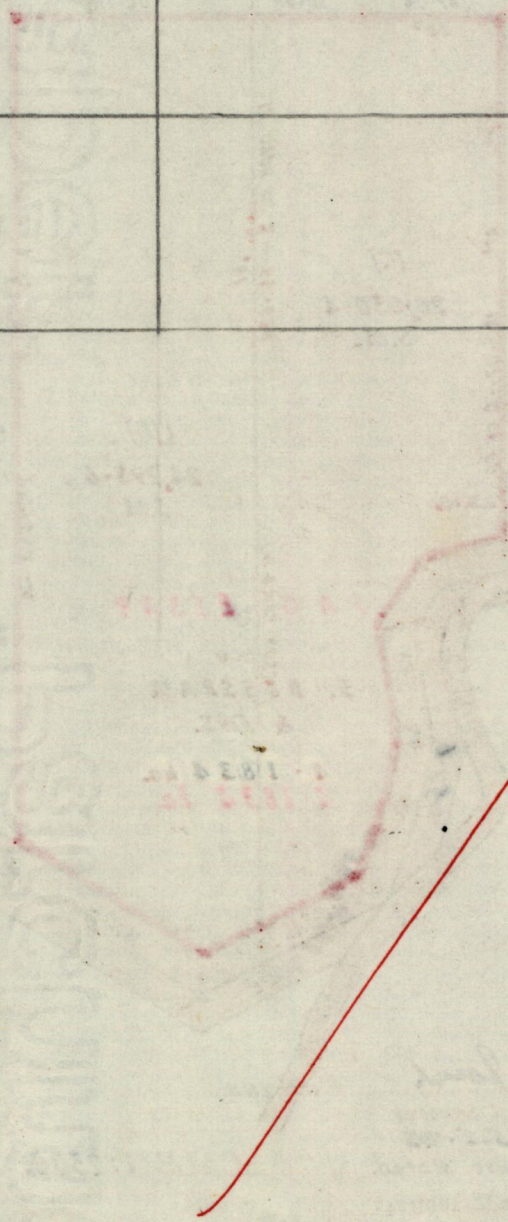
Entered

Land Surveyor, Trinidad 6th February 1984

Original Survey BK 16:52

18 59
Mathura Singh, Janet Sookdeo
& Ors.

Lot No.	Vol.	NAME
C		
D		



1332/155
11/25/57