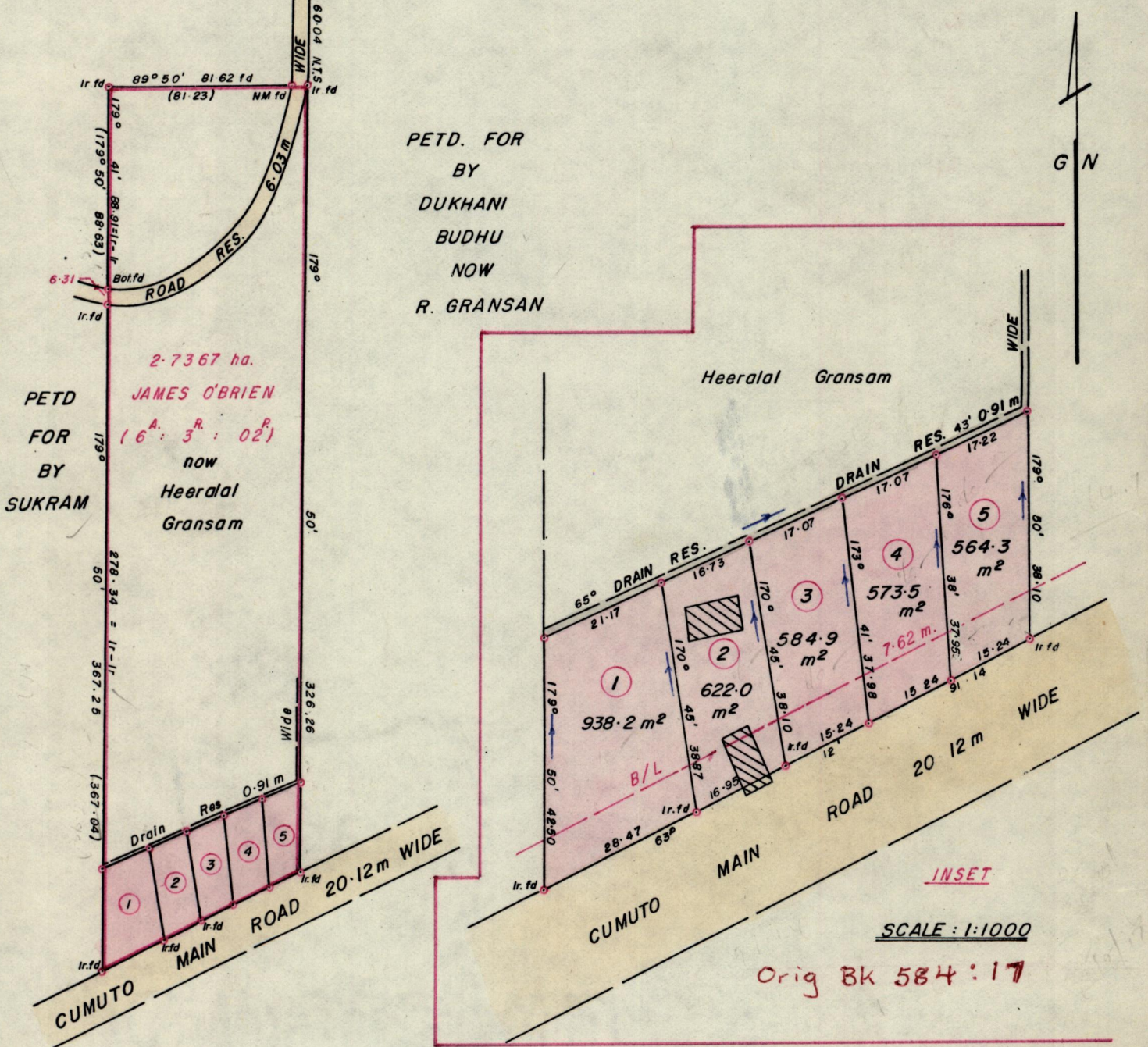


Vol. 5111 Fol. 359
R.P.O. Vol 631
C.T. Vol.

Fol. 543
Fol.

Ward of Tamana
County of St. Andrew
Cadastral Sheet E.6.I

SEE INSET



Approved

AB Joseph

Director of Surveys 87-1-28

BEARINGS ARE BASED ON SOLAR OBSERVATIONS.

* Denotes Iron put except otherwise stated

Note: To obtain compass bearings add/subtract 10 minutes

SCALE 1:2500

Distances are in Metres

PLAN of 5 Parcelsof land coloured pink in the Ward of Tamana

Containing together three thousand two hundred and eighty two point nine square metres
Surveyed by me, with due authority, in March, 1983

I certify that I have complied with rule 76 under section 14(2)(d) of the
Land Surveyors' Ordinance 1952, and that this plan is correct.

Checked by *GR 28/1/87*

ABeevanan

Entered

Land Surveyor, Trinidad ... *2nd September 1986* ...

ORIG BK 584 fol 17

Lot No.	Vol. & Fol.	NAME
1		
2		
3		
4		
5		

Alcornoque
24/1/17