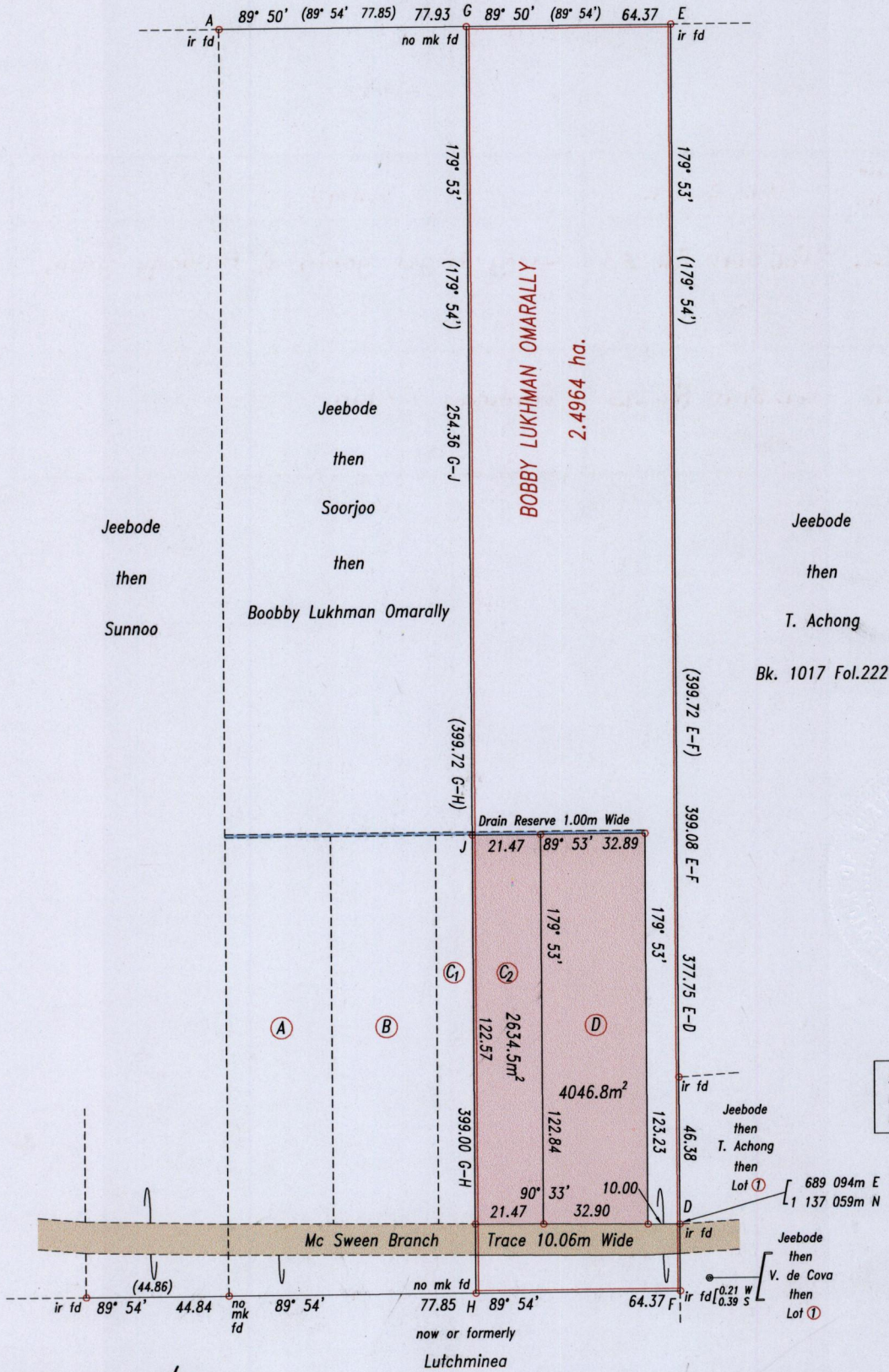


R.P.O. Vol. 7 Fol. 495
C.T. Vol. 4905 Fol. 47
Vol. 5140 Fol. 275
U.P.I.N. No.:

Cadastral Sheet H.I.E. 54F
County of Victoria 2/a, 2/c
Ward of Ortoire

Crown
then
Ramchurrun



G.N. Cassini

Source: GPS (Hand Held)
Error Statement: +/- 5m
Datum: Naparima, UTM (Zone 20).

References: Bk.710 Fol.63
Bk.710 Fol.68
Bk.710 Fol.54

Approved

Lynn Roopchand
Director of Surveys
2009.1.28

Orig BK-710: 63

NOTE
Parcel (C₁) and Parcel (C₂) are to be amalgamated

SCALE 1: 2000

Distances are in metres

○ Denotes iron put except otherwise stated

Bearings are Cassini Grid based on Solar Observations

PLAN of 2 parcels of land coloured pink in the Ward of Ortoire
Containing together six thousand six hundred and eighty one point three square metres
Surveyed by me, with due authority, in August & September 2008

In accordance with Regulation 25(1) of the Land Surveyors' Regulations 1998, I certify that this plan is correct.

Checked by *Andy 22/1/09*
Entered

L. A. Roopchand
Trinidad & Tobago Land Surveyor 16/12/2008



Lot No.	Vol. & c.T.	NAME
C2	Vol. 5140 Fol. 283	Larry Nigel Gobin & Anthony Gobin
D	Vol. 5140 Fol. 293	Anthony Gobin



1911

1421/206