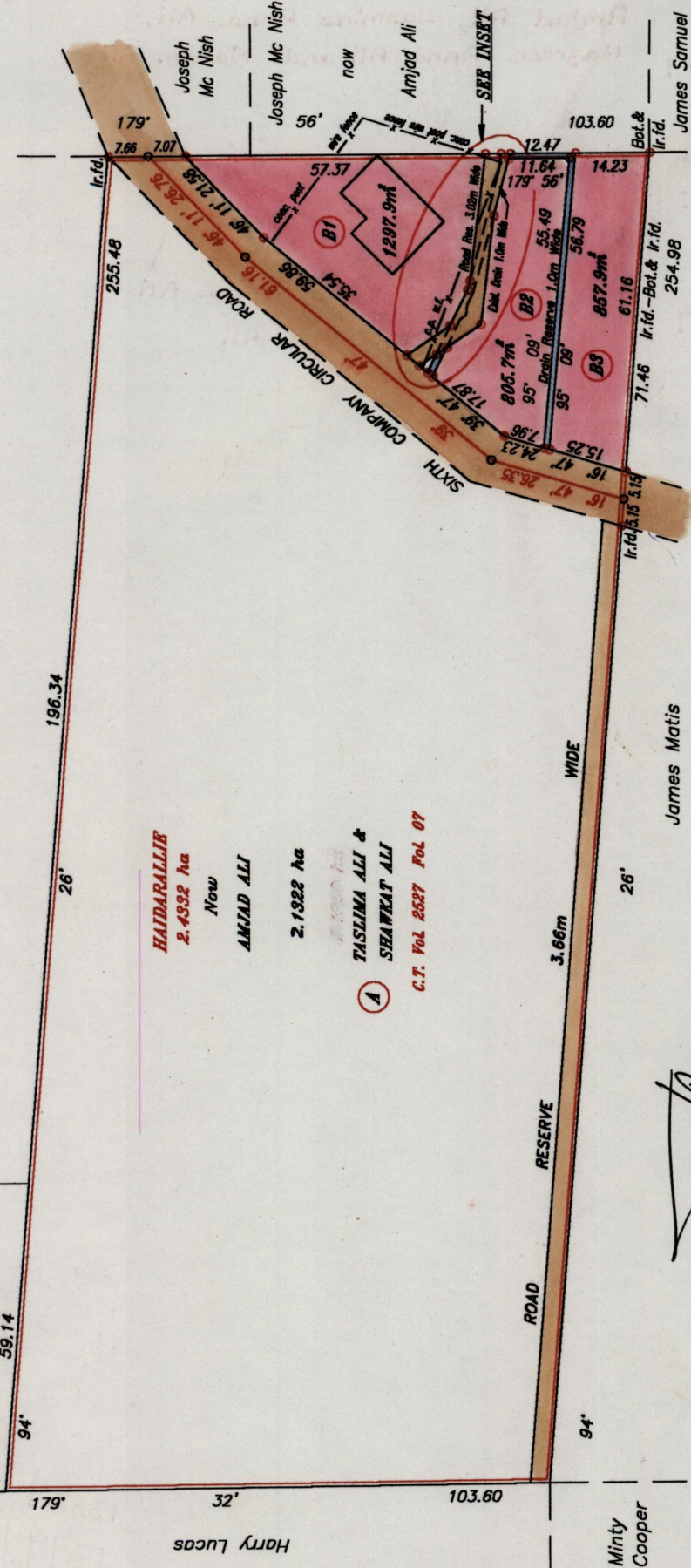


R.P.O. Vol. 164 Fol. 193
 C.T. Vol. 1888 Fol. 127
 Vol. 5089 Fol. 479

E. Cooper

Joseph Mc Nish



HAIDARALLIE
 2.4382 ha
 Now
AMJAD ALI
 2.1322 ha
TASLIMA ALI & SHAWKAT ALI
 C.T. Vol. 2527 Fol. 07

Ward of Ortoire
 County of Victoria
 Cadastral Sheet (G.S.N.), 54E
 4/C

STA.	BEARING	DIST(m)
D- D1	116° 12'	6.26
D- D13	39° 47'	1.22
D13-D14	39° 47'	2.08
D14-D15	39° 47'	3.15
D8- D7	179° 56'	3.04
D7-D7a	179° 56'	1.76
D13-D12	116° 12'	3.95
D14-D12	146° 30'	4.01
D12- D1	146° 30'	2.35

Approved
 Director of Surveys

2008-11-27

○ Denotes Iron put except stated otherwise.
 Bearings are Cassini Grid based on Solar Observations.
 Note : To obtain compass bearing add 04 minutes.
 Plan of three Parcels of land coloured pink in the Ward of Ortoire
 Containing together two thousand nine hundred and sixty one point five square metres
 Surveyed by me with due authority, in March 1999
 In accordance with Regulation 25 (1) of the Land Surveyors' Regulations 1998,
 I certify that this plan is correct.

Checked by M.M. 12/09/03

Entered

REF. BK. 1110 Fol. 153 - Orig Survey

SCALE 1 : 1250

Distances are in metres

Ward of Ortoire

square metres

March 1999

Regulations 1998,

correct.

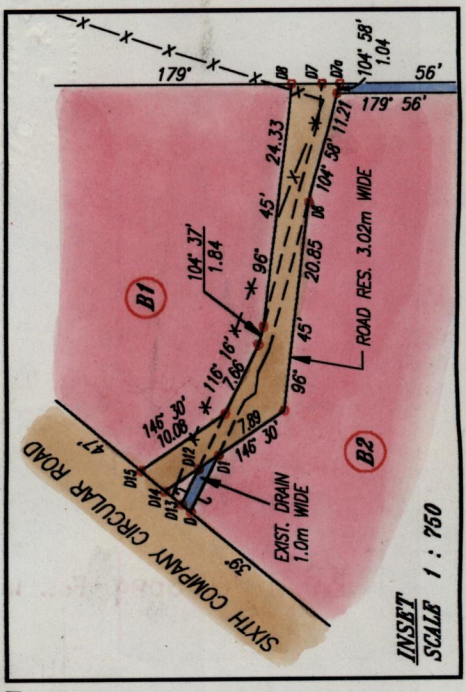
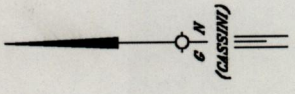
29/05/2002



Lenny Handomanseng
 Lenny Handomanseng
 Trinidad & Tobago, Land Surveyor

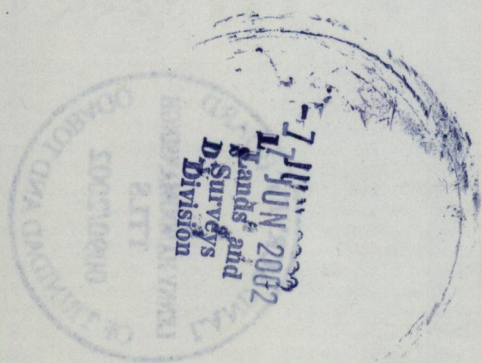
1332

131



Original Bl. 1110 fol. 153

Lot No.	Vol.	NAME
B1	Vol. 5089 Fol. 487	Amjad Ali, Jasmine Anna Ali, Nazreen Anna Ali and Naeem Ali
B2	Vol. 5089 Fol. 497	Amjad Ali, Jasmine Anna Ali and Naeem Ali
B3	Vol. 5089 Fol. 507	Amjad Ali, Jasmine Anna Ali and Nazreen Anna Ali



1332 | 131
~~1279~~ / 222