

Vol. 5088 Fol. 245

R.P.O. Vol. 164

Fol. 169

C.T. Vol. 678

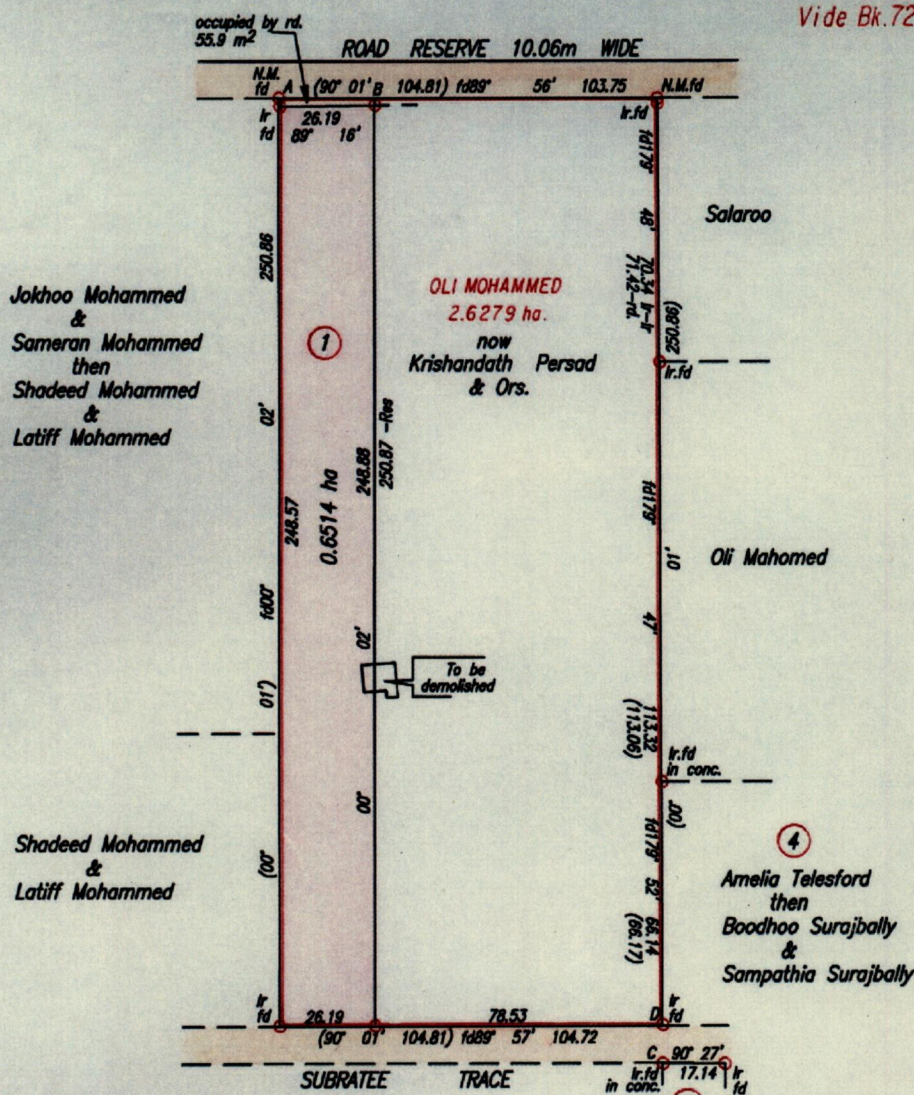
Fol. 5

Ward of Savana Grande

County of Victoria

Cadastral Sheet G.14.D. $\frac{64E}{1/a}$

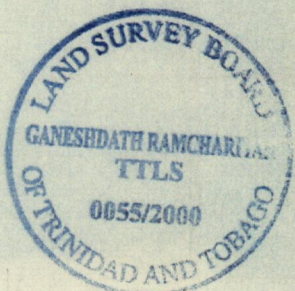
Vide Bk.724 Fol.82



Approved. *[Signature]*
 Director of Surveys 14.4.2000

A - B	89° 56'	26.19
C - D	359° 55'	10.10

SCALE 1/2000
 Distances are in Metres



- Denotes Iron put except otherwise stated
- Bearings are based on Solar Observations

PLAN of a Parcel of land coloured pink in the Ward of Savana Grande
 Containing zero point six five one four hectares
 Surveyed by me, with due authority, in May 8th.1998
 In accordance with Rule 25 (1) of the Land Surveyors' Regulations 1998,
 I certify that this plan is correct.

Orig Bk. 356:188

Checked by. *[Signature]*
 TTLS

Entered Land Surveyor, Trinidad & Tobago. *10/04/2000* .2000
 Path=C:\Ram\K-Persad\K-Persad1.dwg
 TTLS

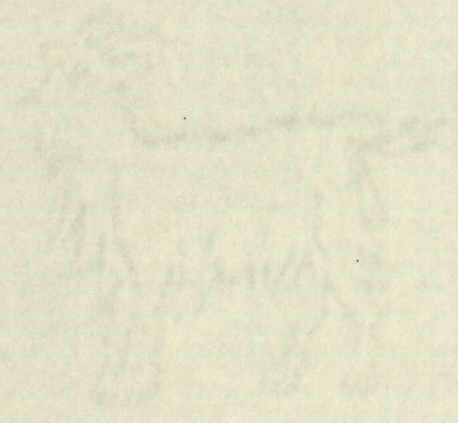
GANESH DATH RAMCHARITAR
 LAND SURVEYOR

paper

Parchment Paper

10

1885-1886



paper

Parchment Paper

11