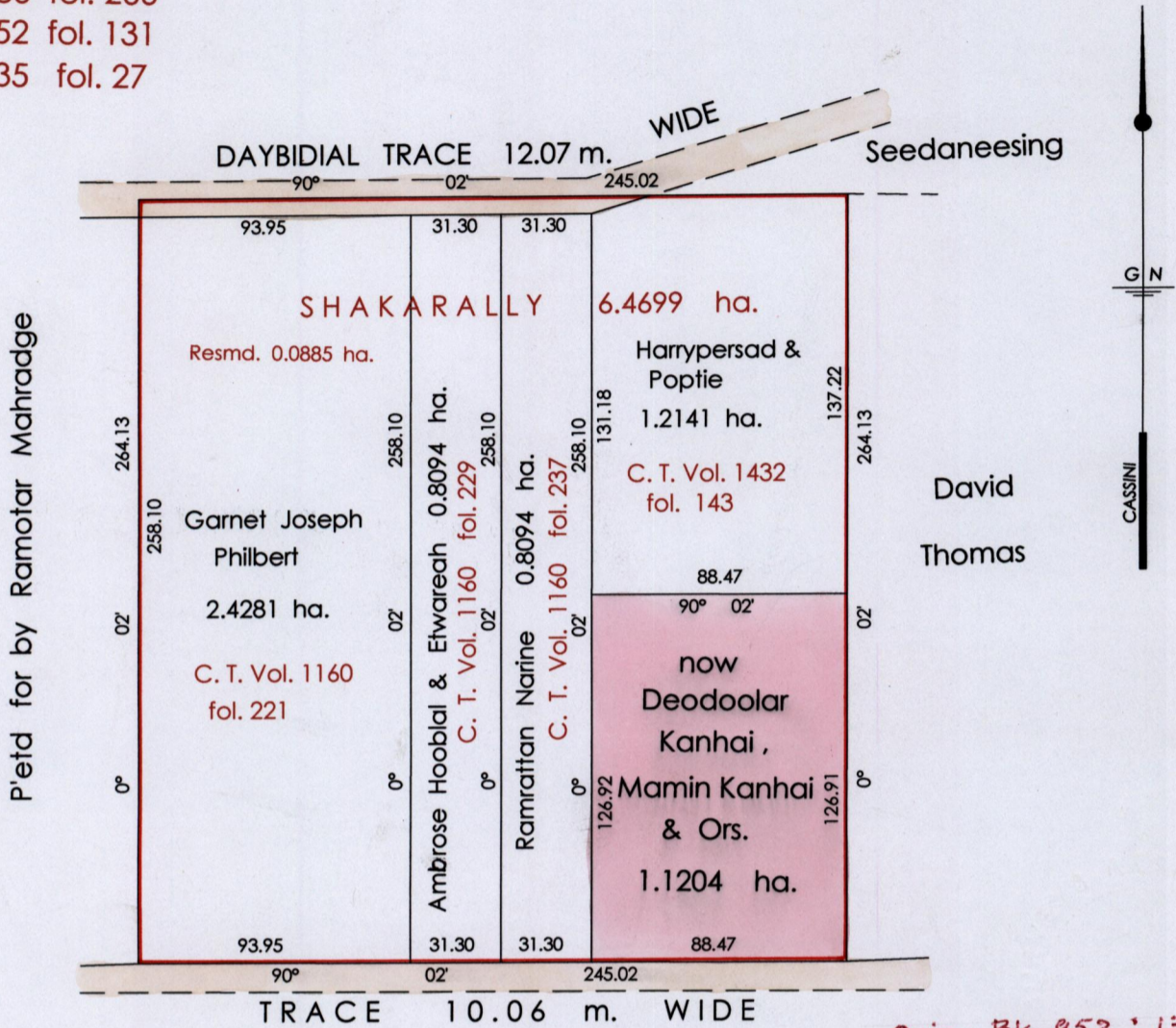


R.P.O. Vol. 103 fol. 599
 C.T. Vol. 1160 fol. 213
 Vol. 5109 Fol. 211
 Bk. 393 fol. 309
 Bk. 886 fol. 266
 Bk. 952 fol. 131
 Bk. 935 fol. 27

Ward of Siparia
 County of St. Patrick
 Cadastral Sheet (G. 13. N.) $\frac{73 C}{1/a}$



Orig - Bk. 952 : 131

Approved *[Signature]*
 Director of Surveys
 20070423



SCALE : 1 : 2500

Note: Bearings are cassini grid based on solar observations Distances are in metres
 This is a true copy of a diagram of six point four six nine nine hectares ,originally transferred to SHAKARALLY showing a portion coloured pink and containing one point one two zero four hectares being the remainder after one resumption & four previous transfers of another portion of land. In accordance with Regulation 25 (1) of the Land Surveyors' Regulations 1998, I certify that this plan is correct.

Checked by *[Signature]*

Entered on Trinidad & Tobago Land Surveyor *[Signature]*2007

Original Bl. 935; 27

MINISTRY OF AGRICULTURE
LAND AND WATER DIVISION
05 MAR 2007
LANDS A/C

1386/89