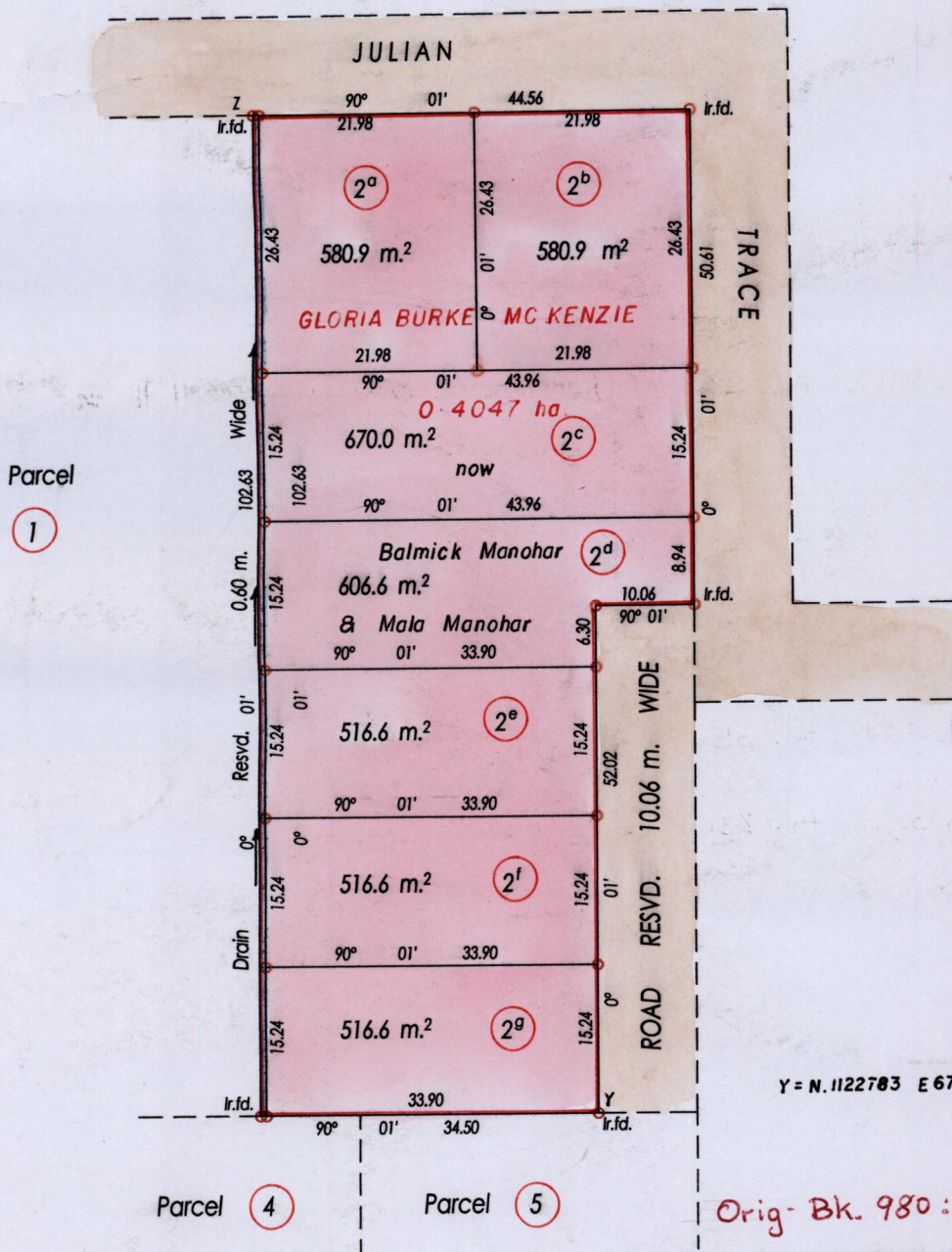


R. P. O. Vol. 592 fol. 185
C. T. Vol. 2377 fol. 301
Vol. 5112 Fol. 155
Bk. 980 fol. 160

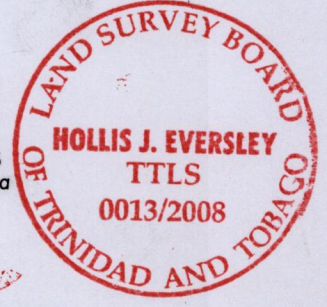
Ward of Siparia
County of St. Patrick
Cadastral Sheet G. 14 M. 64 D.
3/c



Y = N. 1122783 E 675610

Orig- Bk. 980:160

Z - N. 1122886 E. 675576
U.T.M. Zone 20 Naparima
Hand Held G.P.S.



o Denotes Iron Put Except Stated Otherwise

SCALE 1 : 750

Approved *[Signature]*
Director of Surveys
2008-12-30

Bearings are Cassini Grid based on Solar Observations Distances are in Metres
 PLAN of 7 Parcels of land coloured pink in the Ward of Siparia
 Containing together three thousand nine hundred and eighty eight point two sq.metres
 Surveyed by me, with due authority in, June 2004
 In accordance with Regulation 25 (1) of the Land Surveyors' Regulations 1998,
 I certify that this plan is correct.

Entered on
 Checked by *[Signature]* Trinidad & Tobago Land Surveyor 19th September 2008

Original Bl. 980 : 160

Lot No.	Vol. & c.T.	Name
2a		
2b	Vol. 5112 Fol. 161	Kenrick O'Brien and Rosabell Thomas
2c		
2d		
2e		
2f	Vol. 5243 fol. 515	Mala Ramsaran
2g	Vol. 5272 fol. 231	Salini Boodoo



1332/74
1227/91