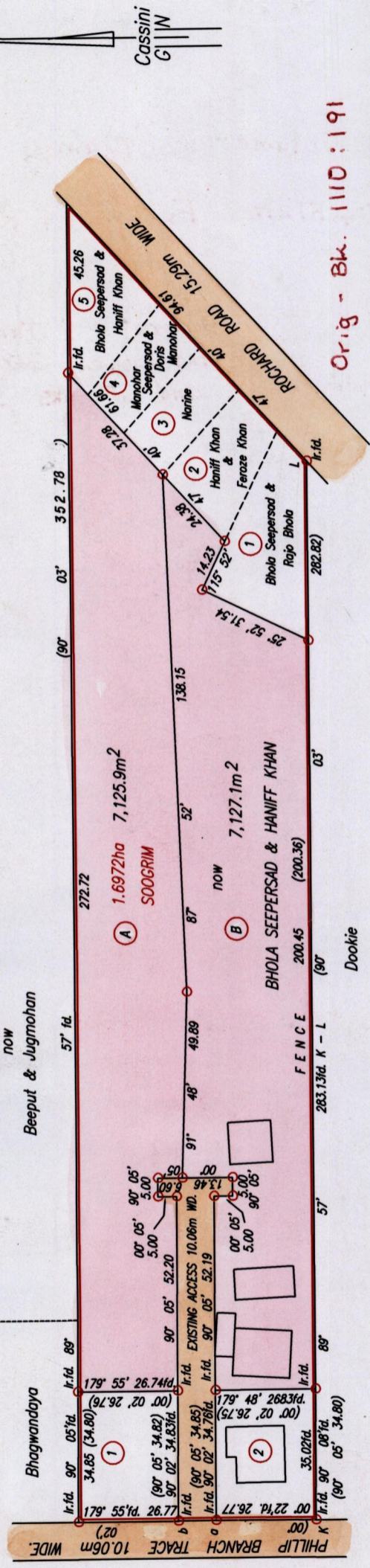


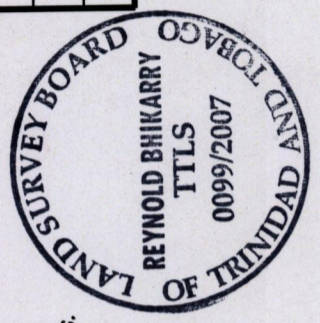
Vol. 5048 Fol. 209
 R.P.O. Vol. 592 Fol. 165
 C.T. Vol. 2408 Fol. 99
 Remaining Portion Plan Filed in R.P.O. 2538 fol 285
 Vide Bk. 957 fol 770
 Vide Bk. 1249 fol 136
 Vide Bk. 1110 fol 191

Cadastral Sheet G.14.M. 64D
 3/c
 Ward of Siparia
 County of St.Patrick.



Orig - Bk. 1110:191

Lot No.	Area	C.T.Vol.	Fol.
1	929.0m ²	2408	107
2	557.4m ²	2453	27
3	464.5m ²	2412	371
4	464.5m ²	2408	113
5	717.2m ²	2538	287



ab = 179° 36' (00° 02') 10.06

SCALE 1:1500

Distances are in Metres

Approved *T. J. G. G. G.*
 Director of Surveys 2007-8-6

○ Denotes Iron put except otherwise stated.
 Bearings are Cassini Grid based on Solar Observations.

PLAN of 2 Parcels of land coloured pink in the Ward of Siparia
 Containing together fourteen thousand, two hundred and fifty three point zero square metres.
 Surveyed by me, with due authority, in August, 2006
 In accordance with Regulation 25(1) of the Land Surveyors' Regulations 1998,
 I certify that this plan is correct.

Checked by *Reynold Bhikarry*
 21/1/07

Entered Trinidad & Tobago Land Surveyor 2007

1332

67

Original Bk. 1110 : 191

Lot No.	CT. Volume	Name
A	Vol 5048 Fol 217	Feroze & Rautee Khan.
B	Vol 5048 Fol 227	Hansraj & Jairam Arjoon, Sumitra and Lionel George, Himchand, Adesh, and Jagdis Seepersad..

