

R.P.O. Vol. 705 Fol. 47  
 C.T. Vol. Fol.  
 See Plan K.D.12.  
 Bk.651 Fol.136

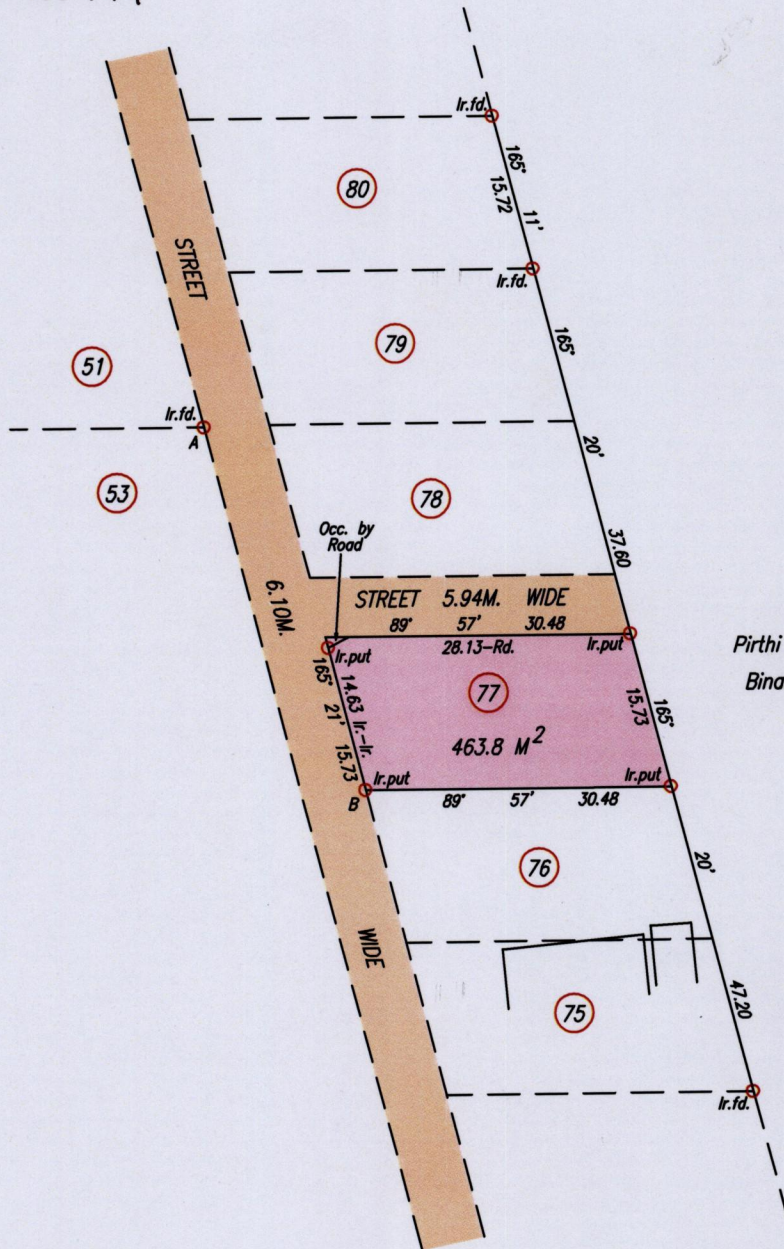
1622

Ward of Charuma 1783  
 County of Nariva  
 Cadastral Sheet D.25.K. 55A  
 1/d

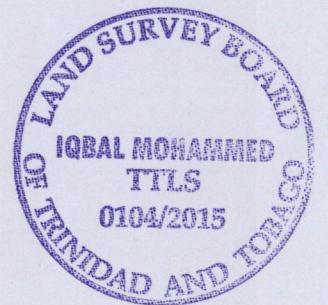
**REDEFINITION PLAN**

**SAN PEDRO POOLE VILLAGE**

Process 504 110794



Pirithi Lal, Rampadarath Lalla,  
 Binasari Lal, Kunjibihari Lal



SCALE 1/750  
 Distances are in Metres.

A - B 156° 08' 39.59

Iron A  
 693488 mE, 1141509 mN  
 U.T.M. 20, Nap. (+/- 3.0m.)  
 G.P.S. (Handheld)

Bearings are UTM Grid based on solar Observations

To obtain UTM Bearings, Subtract 18 minutes

PLAN of a Parcel of land coloured pink in the Ward of Charuma

Containing four hundred and sixty three point eight square metres

Redefined by me, with due authority, on July 10th, 2015 for Mindy Beekhee-Rampersad

Certified Correct in accordance with Regulation 25 (1) of The Land Surveyors' Regulations 1998,

Checked by . . . . .

*[Signature]*

Entered on . . . . . Trinidad & Tobago Land Surveyor (T.T.L.S.) . . . . . 13/7/2015

MINISTRY OF FOOD PRODUCTION  
 LAND AND MARINE AFFAIRS  
 JUL 13 2015  
 #183  
 Lands & Surveys Division